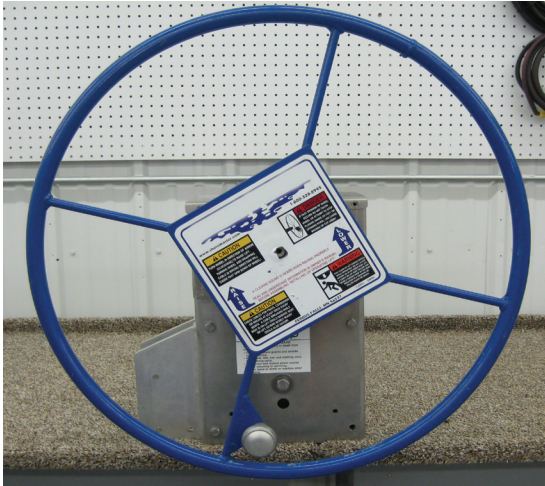


Most Common (MC) Installation Guide

Always Lower The Boat Lift Before Attempting Assembly.

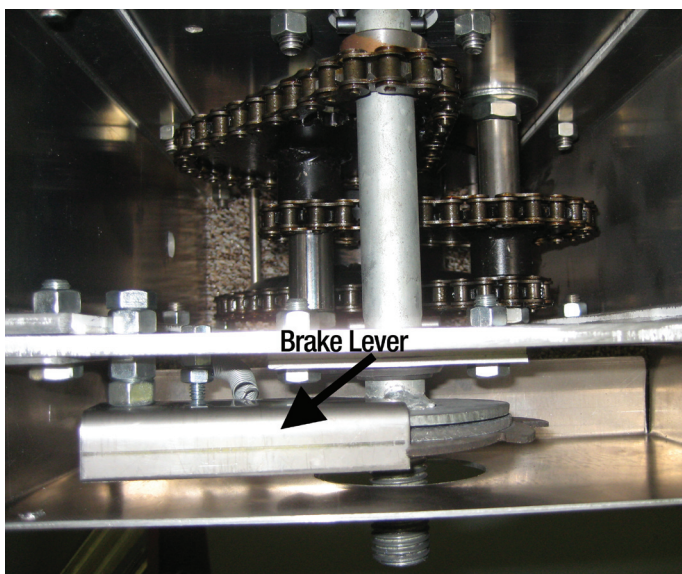
Tools required: Crescent Wrench, 9/16 Wrench, Regular and Phillips Screwdriver.



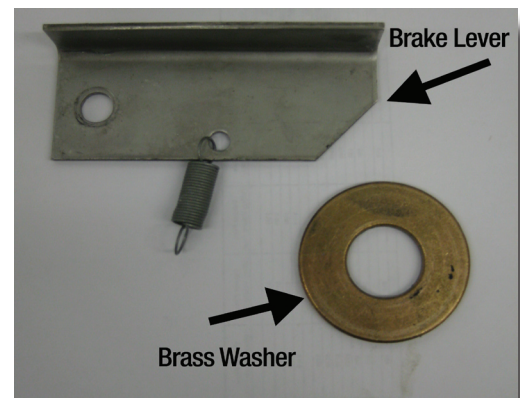
1. Lower the Boat Lift.
2. Remove the Wheel.



3. Remove the Top Cover.

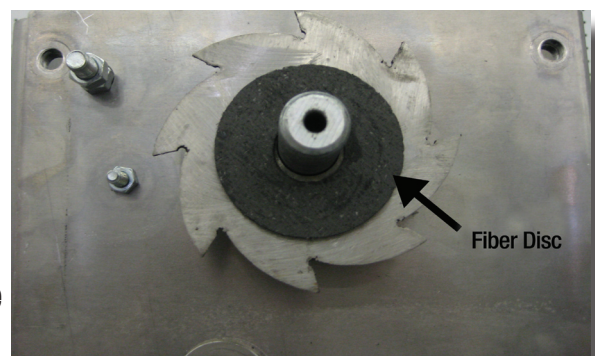


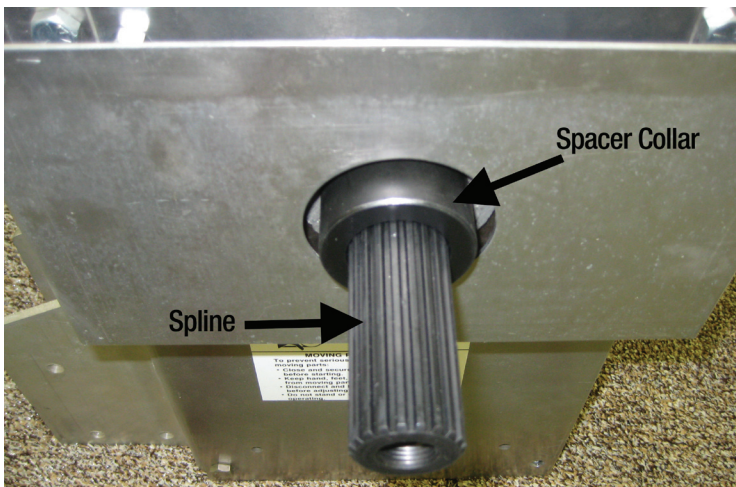
4. Remove the Brake Lever.



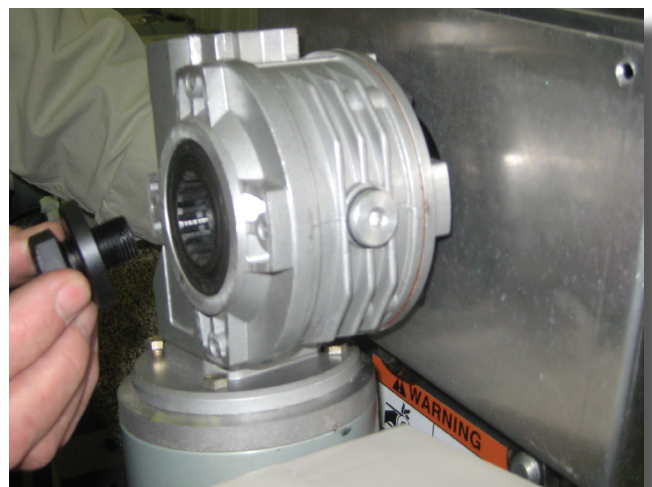
You Will Not use the pieces above any longer.

5. Replace the Brass Washer with the Fiber Disc.

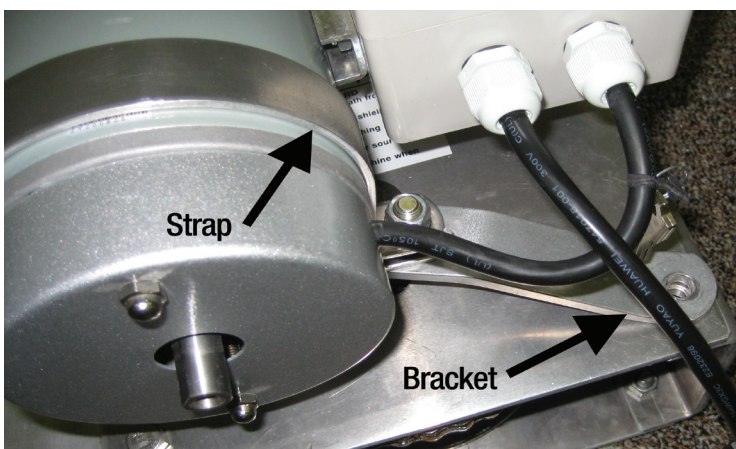




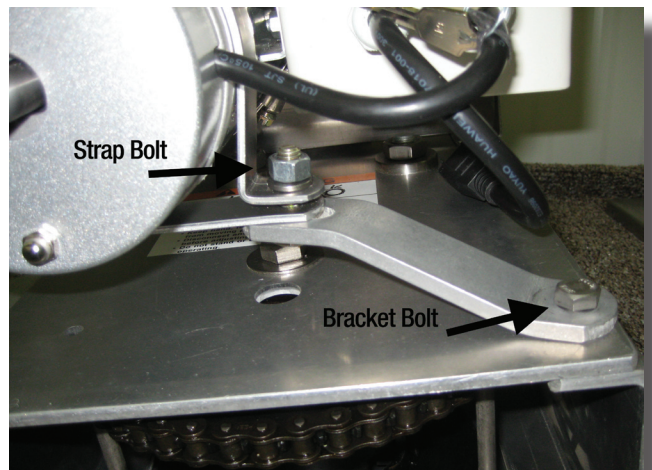
6. Install the Front Cover, Install the Spline, and Install the Spacer Collar.



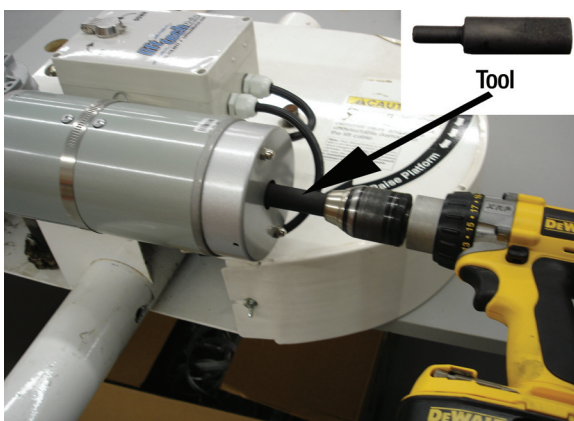
7. Slide the Motor down onto the Spline. Install the Bolt and Washer onto the Motor and Tighten to Approximately 70 Foot Pounds.



8. Install the Motor Strap around the Motor and Install the Bracket.



9. Tighten the Strap and Bracket Bolts.



Plug in and Enjoy!

In case of a Power Outage. This Tool may be Inserted into a Drill to Raise or Lower your Lift.

Recommended Extension Cords up to 150 feet 12/3.

Any question regarding Electrical current requirements please call your Authorized Dealer or Lift Tech Marine 1-866-319-8877..

Caution: All power used on your dock or lift needs to be GFI protected at the shore line.