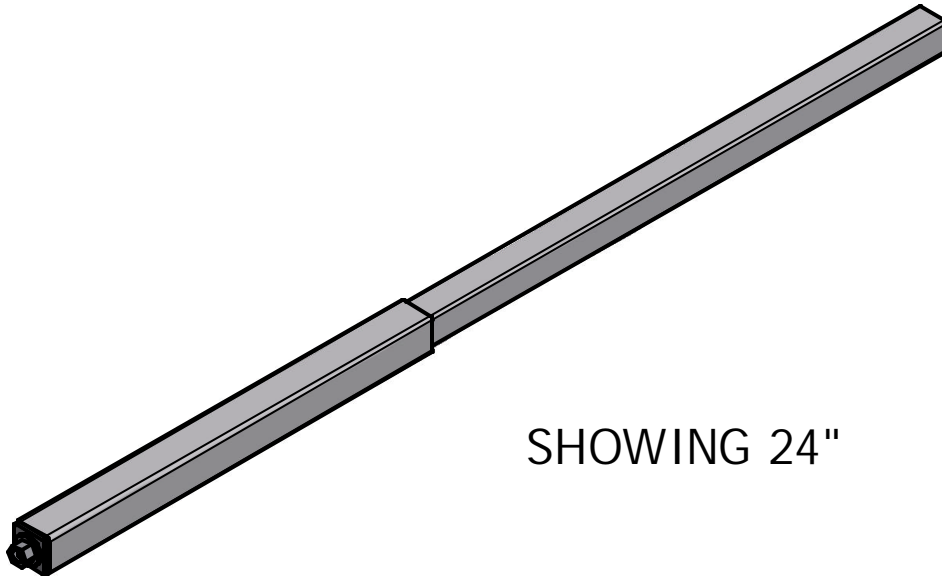




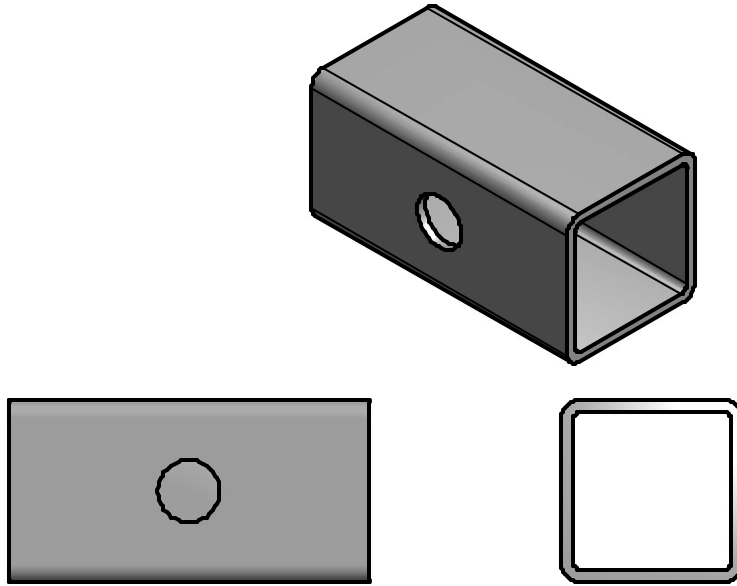
2" Screw Leg



SHOWING 24"

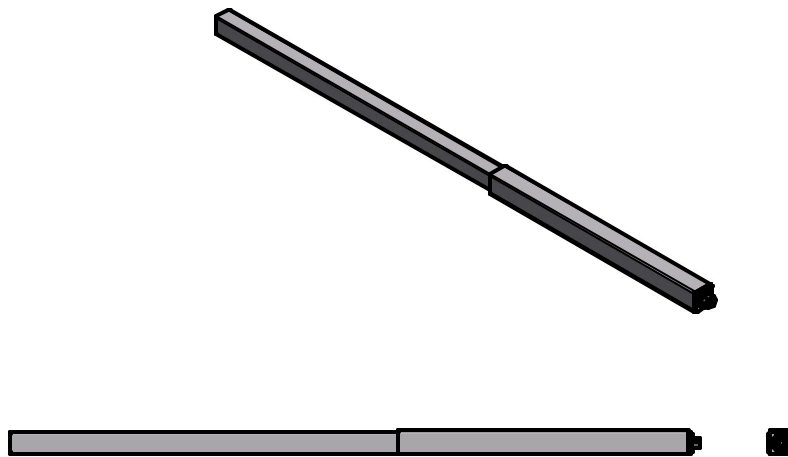
PARTS LIST			
ITEM	QTY	PART NUMBER	DESCRIPTION
1	2	VM-115-05	SPACER
2	2	VM-115-00	24" SCREW LEG

1



SPACER (REQ'D 2)

2



SCREW LEG (REQ'D 2)

To insure your safety while assembling your Voyager product:

- Fully read and understand the assembly instructions
- Do not assemble this product if items are missing or damaged
- Wear protective gloves, clothing and eye wear when assembling this product
- Check tightness of all hardware each year to avoid injury

❖ *Note: You may need assistance when raising dock up to install screw legs.*

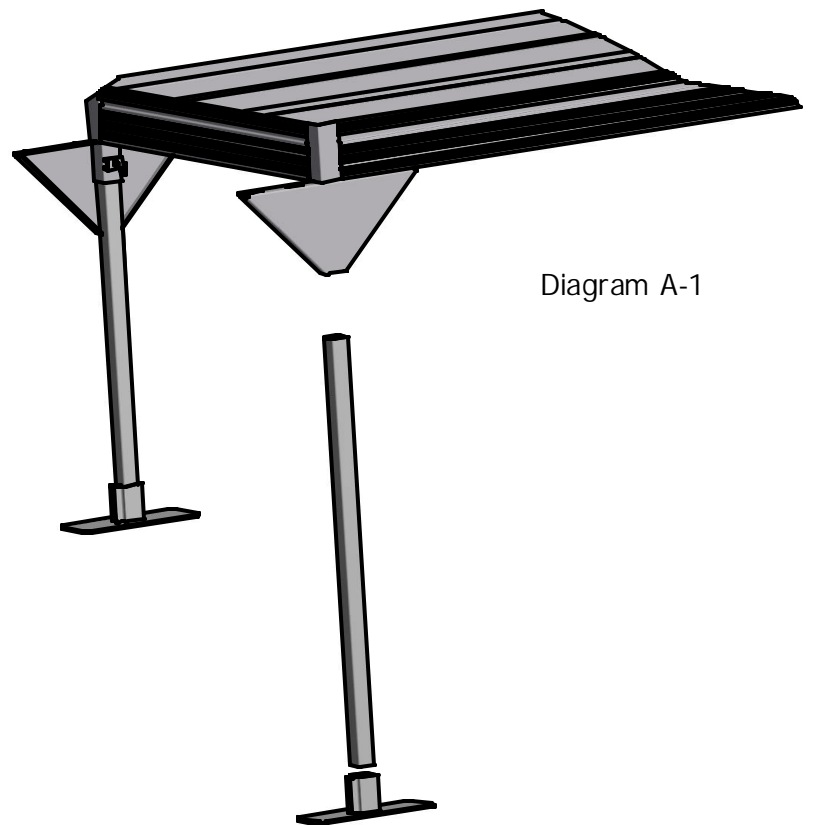
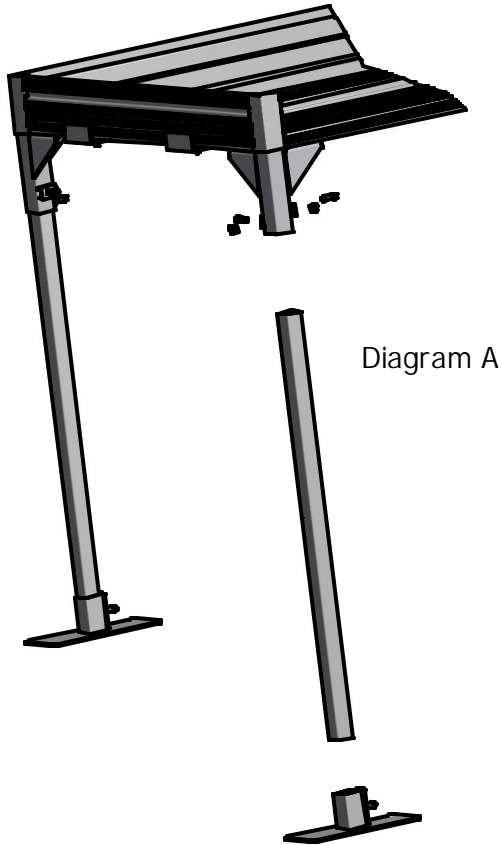
Installation procedure

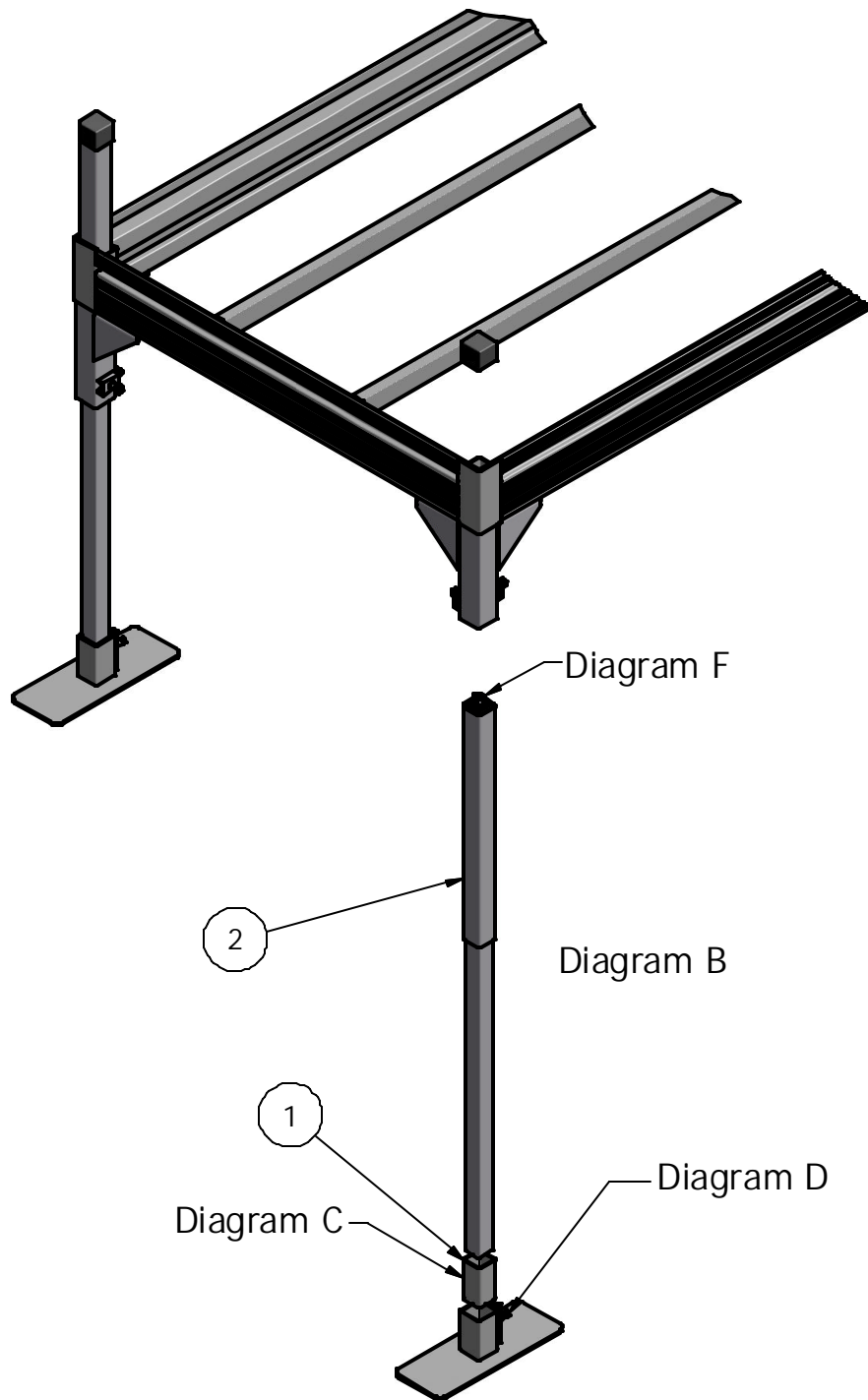
The following tools will be needed: 1/2" wrench, 15/16" wrench, tape measure and level.

1. Raise end of dock off the ground or do one side at a time. *
2. If used on new dock installation use screw legs in place of dock legs as per dock instructions and skip to step 4. If using on dock already assembled go to step 3.
3. Take 1/2" wrench and loosen set screw on leg bracket and foot pad to remove dock leg.
Use diagram A or A-1 depending on dock style installing on.
4. Install spacer into foot pad (making sure to align the hole in spacer with set bolt). **Per diagram C.**
5. Slide screw leg into leg bracket. **Per diagram B or B-1.**
6. Once screw leg is through leg bracket far enough, slide foot pad with spacer onto screw leg. **Per diagram C-1.**
7. Set bolt on foot pad can now be tightened with 1/2" wrench.
8. With tape measure set dock to desired height **and tighten set bolts on leg bracket with 1/2" wrench. **Per diagram D.**
9. Repeat steps 3-7 for other leg.
10. Dock can now be set down on the ground if raised in step 1.
11. Dock height and level can be checked and set.
12. Set level and final height by adjusting nut (using 15/16" wrench) on top of screw legs to raise up or down. **Per diagram F.**
13. Once adjustment is complete, if caps were used on stationary legs they can be installed onto screw legs.

***Remove panels from dock when installing screw leg to take some weight off dock.**

****Keep in mind screw legs are shipped fully compressed, you will need to screw the leg out to have adjustment for water fluctuation.**





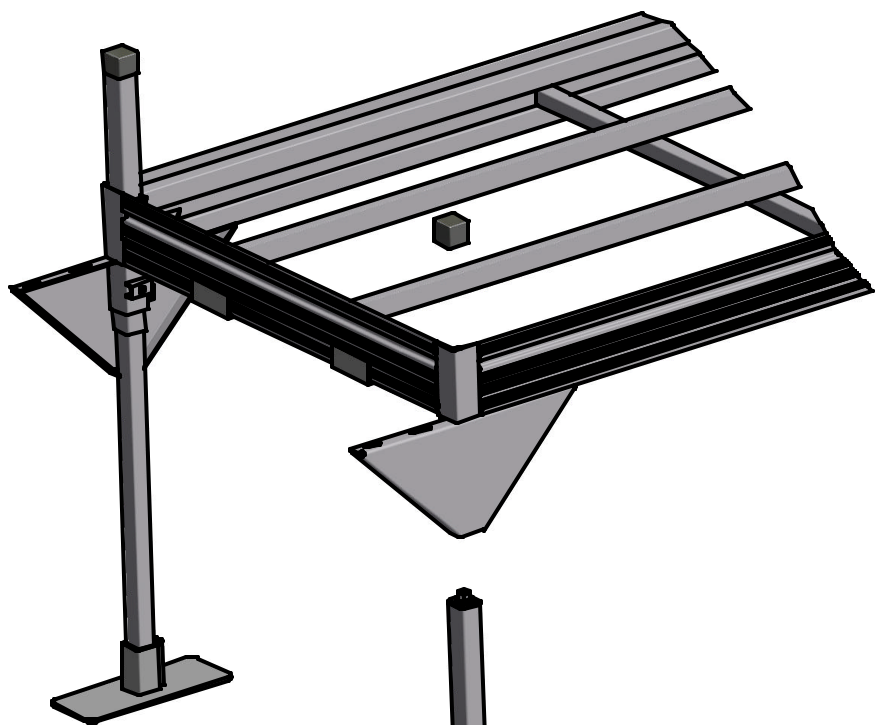


Diagram B-1

Diagram C-1

