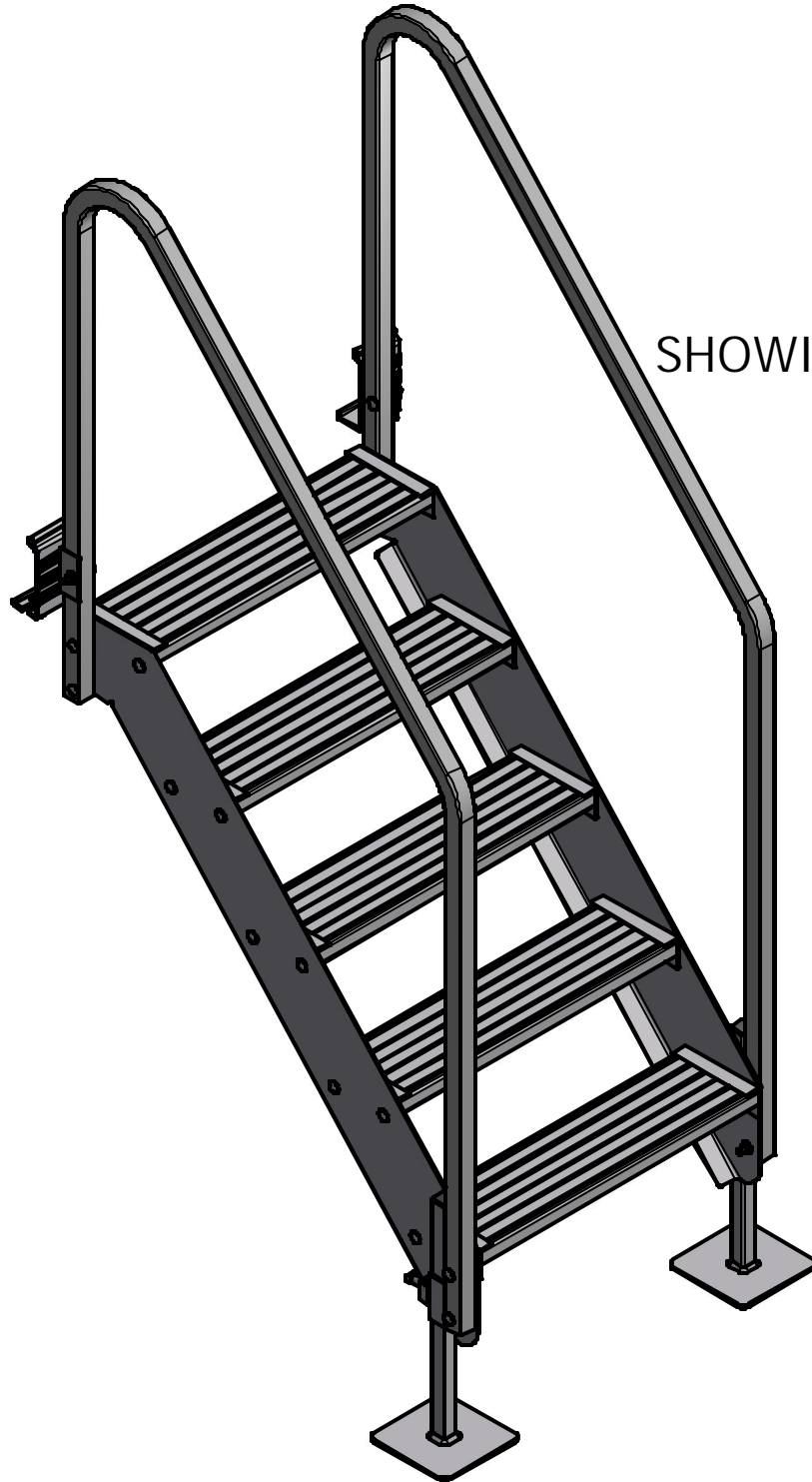


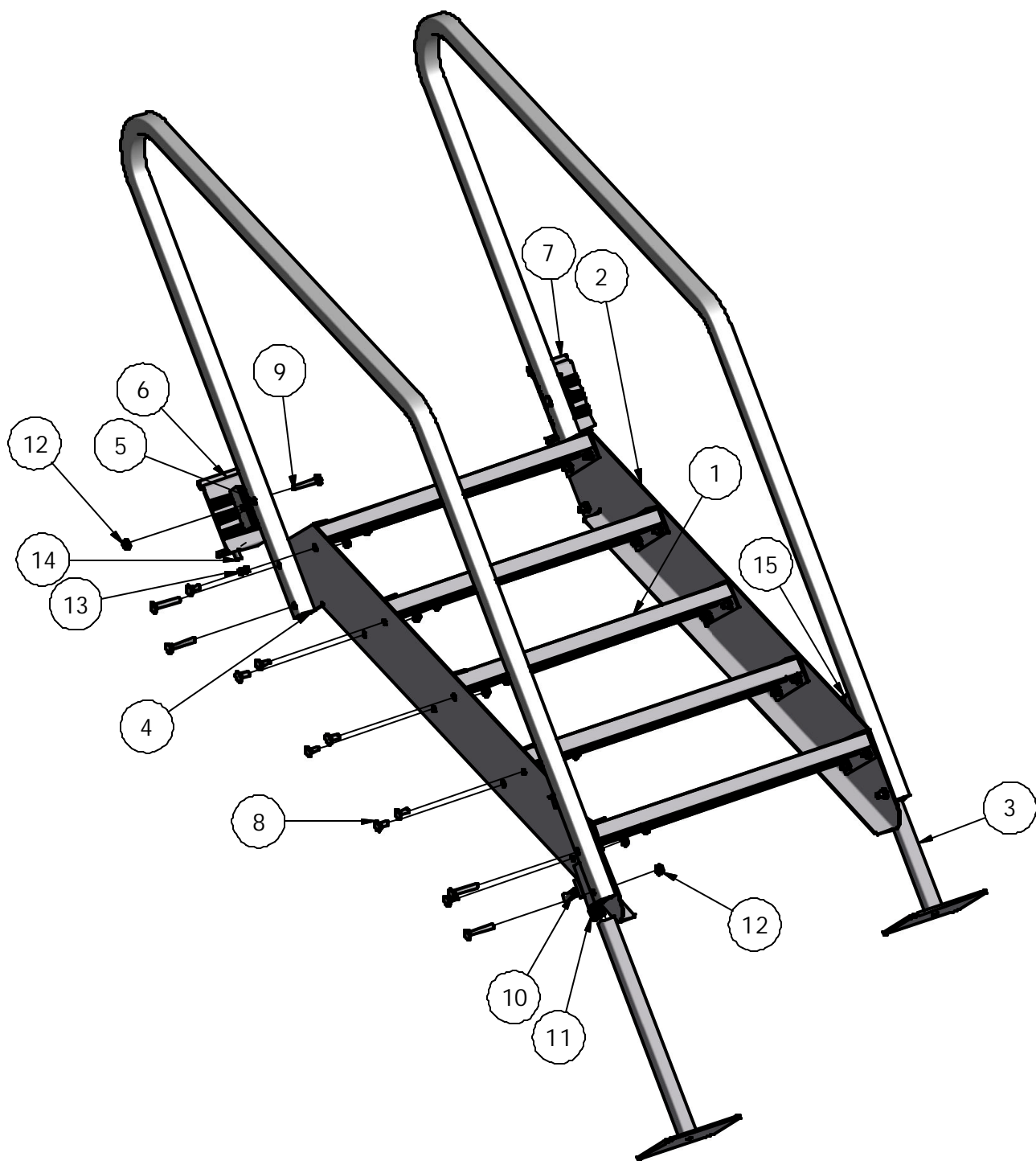


3-4 And 5-6 Step Stair



SHOWING 5-6 STEP

(5&6) DOCK STAIRS



5 & 6 STAIRS

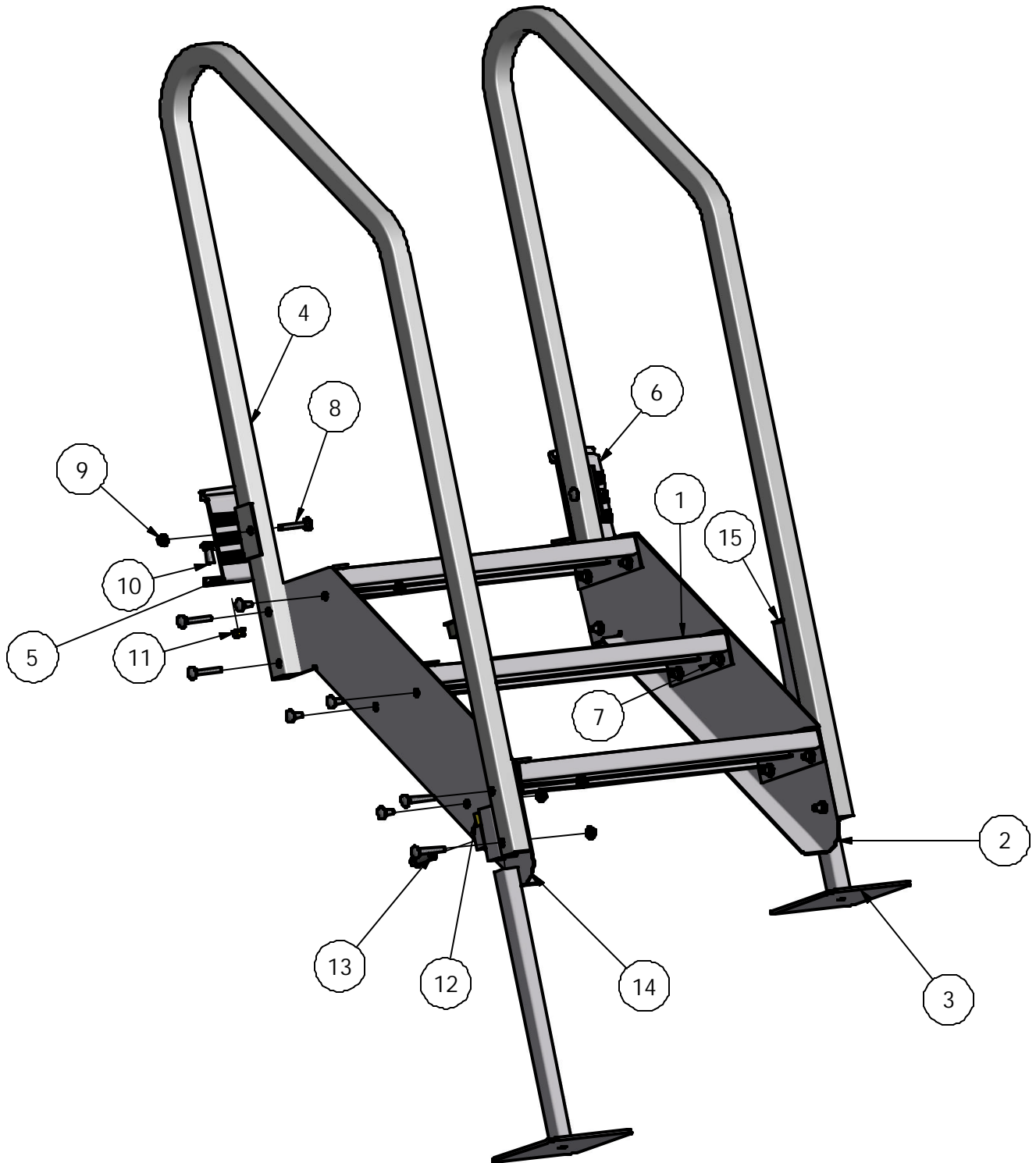
PARTS LIST			
ITEM	QTY	PART NUMBER	DESCRIPTION
1	5	VM-098-1	22" STEP
2	1	VM-092-2	RH 5 STEP CHORD
3	2	VM-098-12	ADJ LEG ASM
4	1	VM-092-3	LH 5 STEP CHORD
5	2	VM-098-7	HANDRAIL 5-6 STEP
6	1	VM-098-17	MOUNTING BRACKET-LH
7	1	VM-098-18	MOUNTING BRACKET-RH
8	16	HD-00120	5/16 X 3/4 CARR BOLT (SS)
9	10	HD-00122	5/16 X 2 CARR BOLT (S/S)
10	2	HD-00060	1/2-13 X 1.25" (S/S)
11	2	HD-00058	1/2-13 ROUNDED NUT SQ (BRASS)
12	26	HD-00123	5/16 FLANGE NUT (S/S)
13	2	HD-00056	3/8 FLANGE NUT (BRASS)
14	2	HD-00059	3/8 X 1" CB (S/S)
15	2	HD-00125	1" BLACK SQUARE CAP PLUG

(3&4) DOCK STAIRS

SHOWING 3-4 STEP



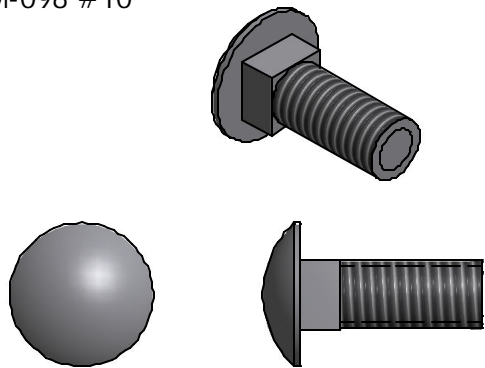
(3&4) DOCK STAIRS



(3&4) DOCK STAIRS

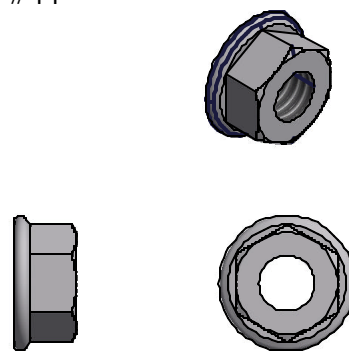
PARTS LIST			
ITEM	QTY	PART NUMBER	DESCRIPTION
1	3	VM-098-1	22 STEP ASM
2	1	VM-098-3	3 STEP RH CHORD
3	2	VM-098-12	ADJ LEG ASM
4	2	VM-098-10	HANDRAIL 3-4 STEP
5	1	VM-098-17	MOUNTING BRKT-LH
6	1	VM-098-18	MOUNTING BRKT-RH
7	8	HD-00120	5/16 X 3/4 CARR BOLT (S/S)
8	10	HD-00122	5/16 2" CARR BOLT (S/S)
9	18	HD-00123	5/16 FLANGE NUT (S/S)
10	2	HD-00059	3/8 X 1" CARR BOLT (S/S)
11	2	HD-00056	3/8 FLANGE NUT (BRASS)
12	2	HD-00058	1/2-13 ROUNDED NUT, SQ (BRASS)
13	2	HD-00060	1/2-13 X 1 1/4" SQ BOLT (S/S)
14	1	VM-098- 4	3 STEP LH CHORD
15	2	HD-00125	1" BLACK SQ CAP PLUG

VM-092 #14
VM-098 #10



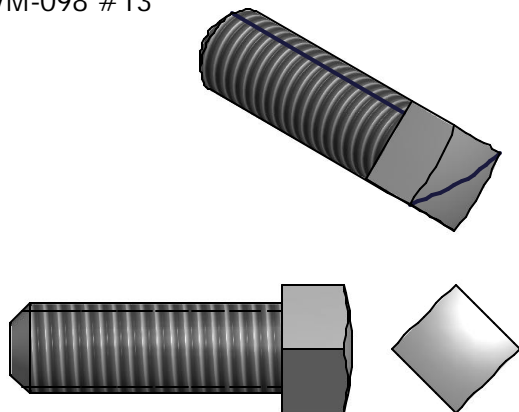
3/8 X 1 CARRIAGE BOLT S/S (2 REQ'D)

VM-092 #13
VM-098 #11



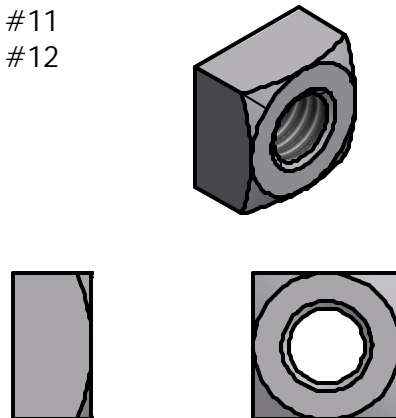
3/8 FLANGE NUT (2 REQ'D)

VM-092 #10
VM-098 #13



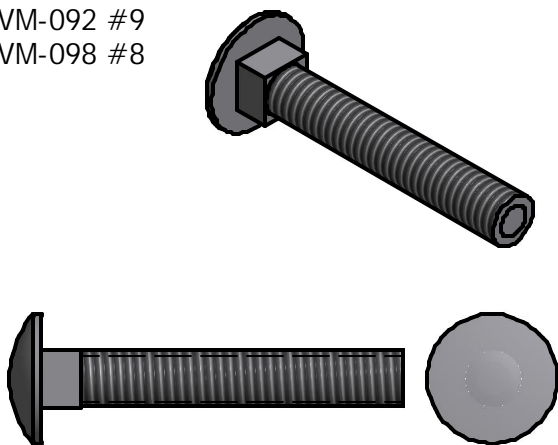
1/2 X 1 1/4 SQ. HEAD BOLT S/S (2 REQ'D)

VM-092 #11
VM-098 #12



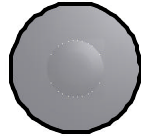
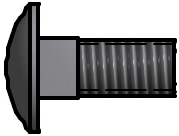
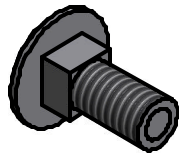
1/2 SQ. NUT BRASS (2 REQ'D)

VM-092 #9
VM-098 #8



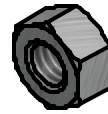
5/16 X 2" CARR BOLT S/S (10 REQ'D)

VM-092 #8
VM-098 #7



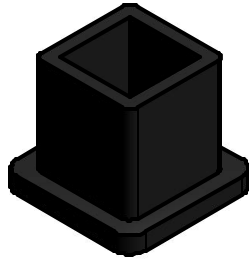
5 & 6 STEPS 5/16 X 3/4 CARR BOLT S/S (16 REQ'D)
3 & 4 STEPS 5/16 X 3/4 CARR BOLT S/S (8 REQ'D)

VM-092 #12
VM-098 #9



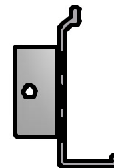
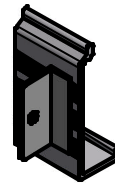
5 & 6 STEPS 5/16 FLANGE NUT S/S (26 REQ'D)
3 & 4 STEPS 5/16 FLANGE NUT S/S (18 REQ'D)

VM-092 #15
VM-098 #15



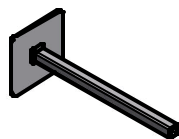
1" CAP PLUG. (2 REQ'D)

VM-092 #6
VM-098 #5



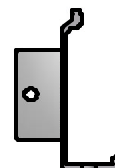
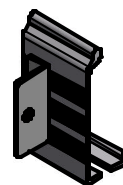
MOUNTING BRACKET LH (1 REQ'D)

VM-092 #3
VM-098 #3



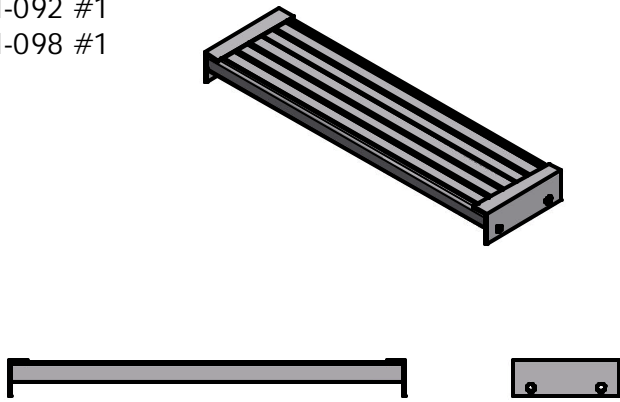
ADJUSTABLE LEG ASM (REQ'D 2)

VM-092 #7
VM-098 #6



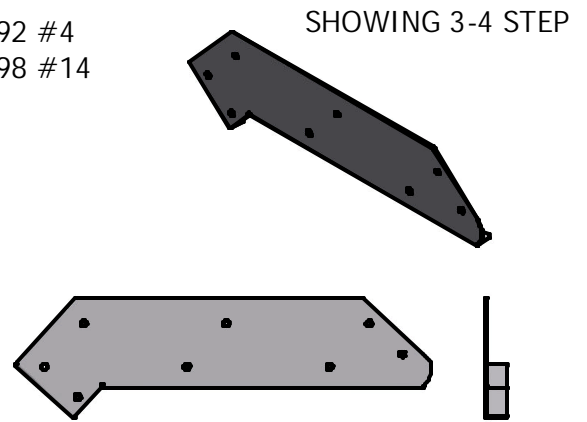
MOUNTING BRACKET RH (1 REQ'D)

VM-092 #1
VM-098 #1



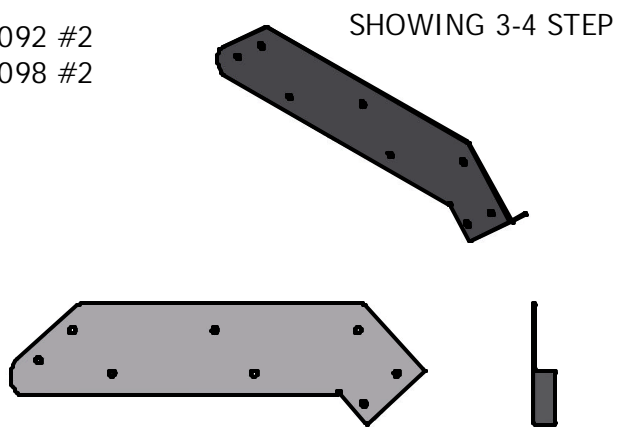
5&6 STEPS 22" STEP ASM
3&4 STEPS 22" STEP ASM

VM-092 #4
VM-098 #14



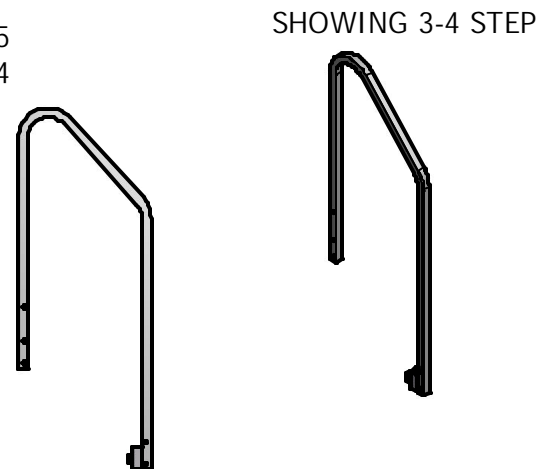
STEPS LH CHORD (REQ'D 1)

VM-092 #2
VM-098 #2



STEPS RH CHORD (REQ'D 1)

VM-092 #5
VM-098 #4



HANDRAIL (REQ'D 2)

To insure your safety while assembling your Voyager product:

- Fully read and understand the assembly instructions
- Do not assemble this product if items are missing or damaged
- Wear protective gloves, clothing and eye wear when assembling this product
- For best results find a flat area to assemble your dock stairs
- Check tightness of all hardware each year to avoid injury

❖ *Note: You may need assistance when carrying out and installing dock stairs to dock.*

The following tools will be needed: 1/2" wrench and 9/16" wrench.

- 1) Install carriage bolts through side rails to middle step and attach flange nut, leave loose at this time. **Per diagram A.**
- 2) Skip to step 4 for 3-4 step stairs. Go to step 3 for 5-6 step stairs.
- 3) Repeat step 1 for other 2 steps in middle.
- 4) Install bottom step putting in a 5/16" x 3/4" carriage bolt in inner hole on both sides. **Per diagram B.**
- 5) Install top step putting in a 5/16" x 3/4" carriage bolt in outer hole on both sides. **Per diagram B-1.**
- 6) Take 5/16" x 2" carriage bolt and put into both holes of lower handrail post, put through stair side rail and attach nut. ** **Per diagram C.**
- 7) Repeat step 6 for other side.
- 8) Take 5/16" x 2" carriage bolt and put into the middle hole of upper handrail post, through stair side rail and attach nut. ** Leave loose at this time. **Per diagram D.**
- 9) Repeat step 8 for other side.
- 10) Install leg with pad into leg socket on lower handrail post. **Per diagram E.**
- 11) Put square nut into channel on lower leg post and start set bolt into nut. Use a 1/2" wrench to tighten up only enough to keep leg in place while taking out to install on dock. **Per diagram F.**
- 12) Repeat steps 10 & 11 for other leg.
- 13) Use 1/2" wrench to tighten up all carriage bolts on steps and handrail, leave top step loose at this time.
- 14) Install 2 carriage bolts into dock raceway and slide over to location stairs will be located. **Per diagram G.**

- 15)** Install mounting bracket onto dock rail. Align carriage bolt to bracket and attach flange nut to carriage bolt. Leave nut loose at this time. **Per diagram H-1.**
- 16)** Repeat step 15 for second bracket.
- 17)** Bring stairs into place, attach to mounting brackets**, with 5/16" x 2 carriage bolt and flange nut. Bolt goes through bracket, into handrail and into side rail and stairs. **Per diagram I.**
- 18)** Tighten all bolts for connector bracket to dock and stair with ½" & 9/16" wrenches.
- 19)** Set height on stair legs and tighten set bolts with ½" wrench. **Per diagram J.**
- 20)** Install caps on top of stair legs. **Per diagram K.**

on 3 & 5 step setups use bottom hole on upright post for handrail, on 4 & 6 step setups use the third hole from bottom on the upright post for handrail. **Per diagram L.

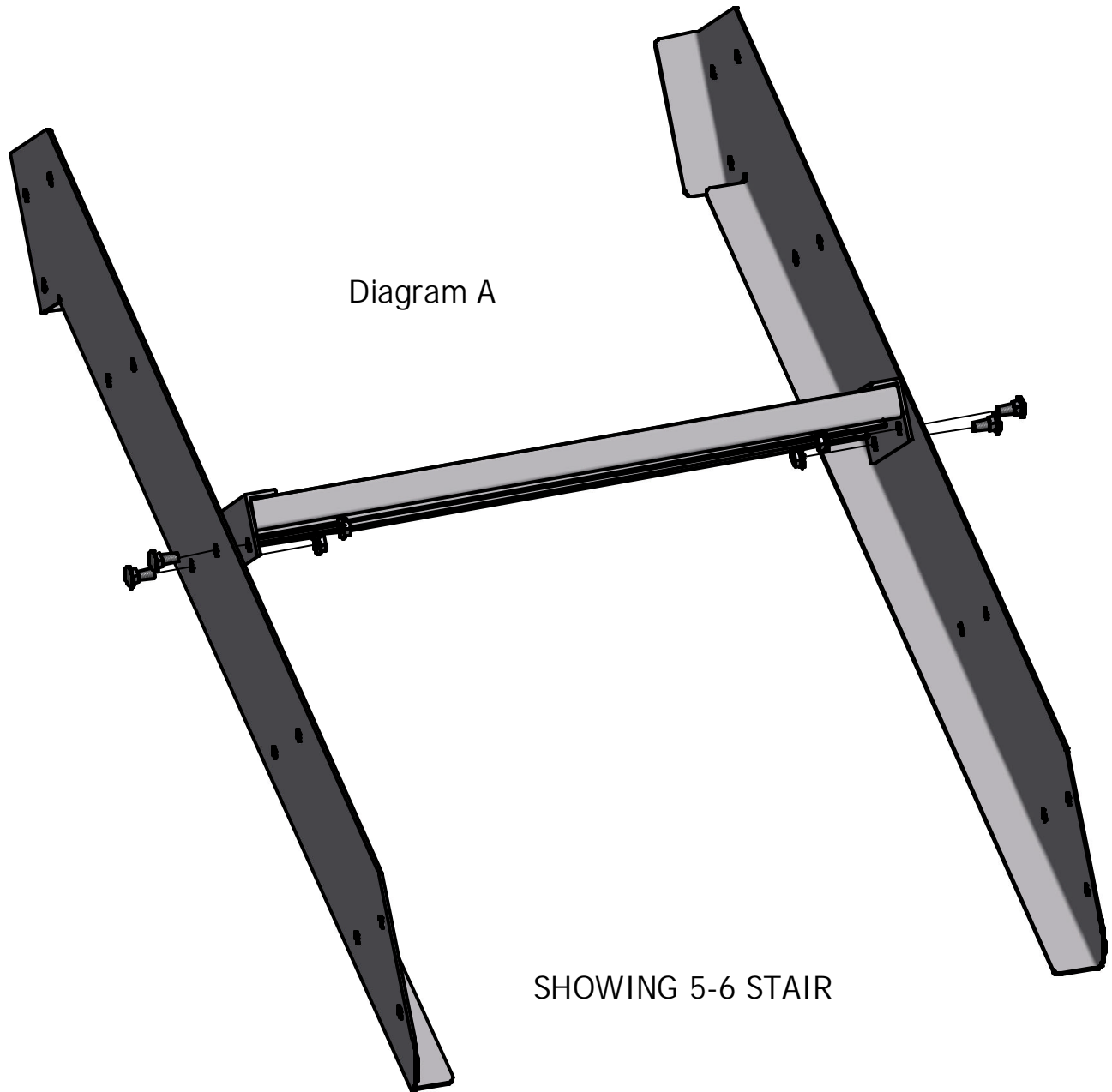


Diagram B

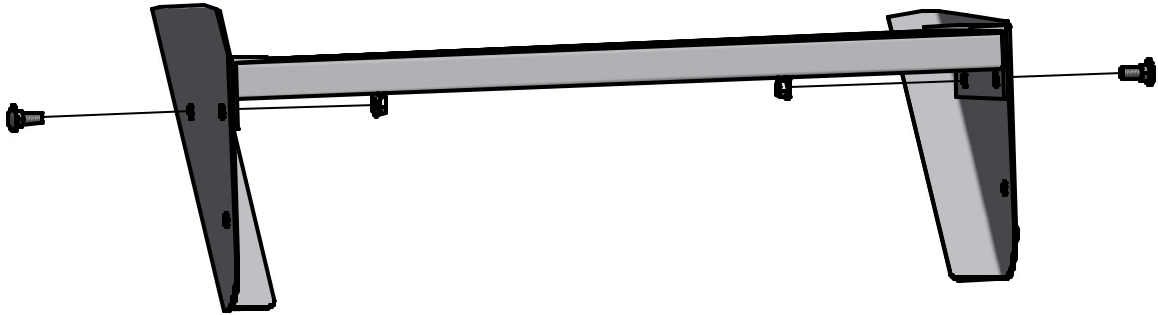


Diagram B-1

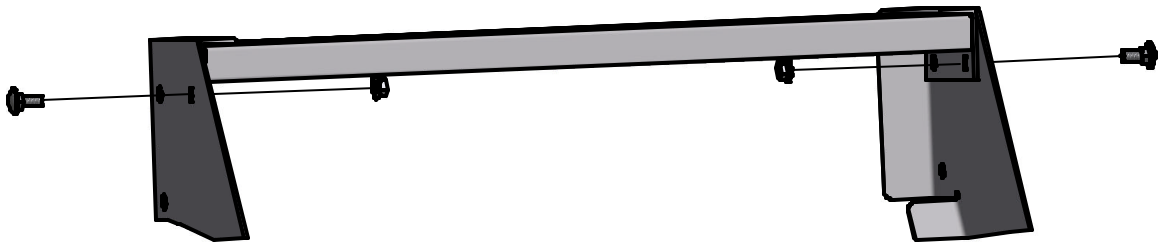


Diagram C

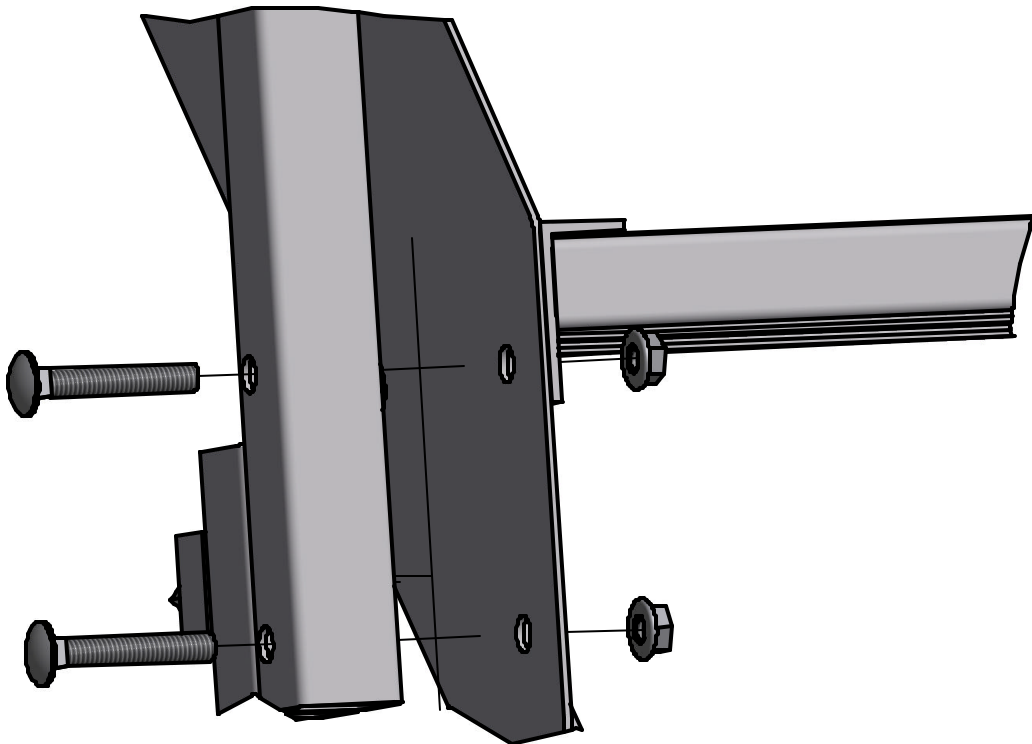


Diagram D

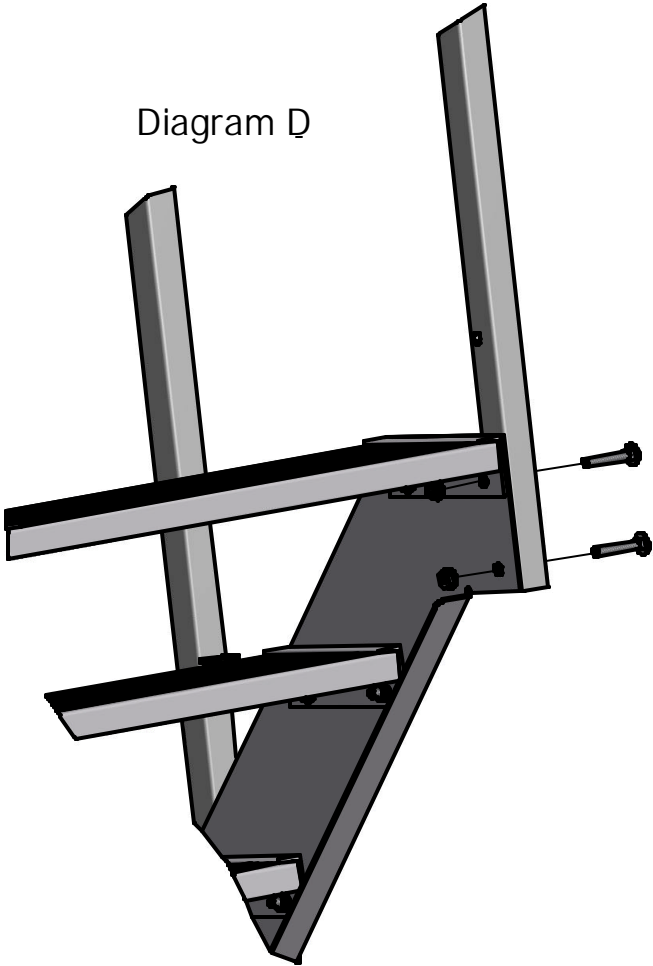
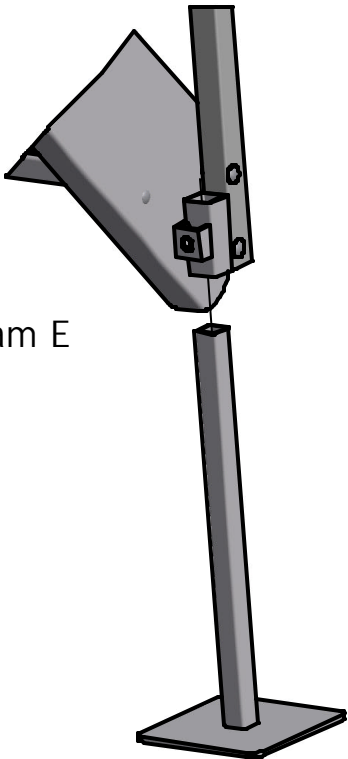


Diagram E



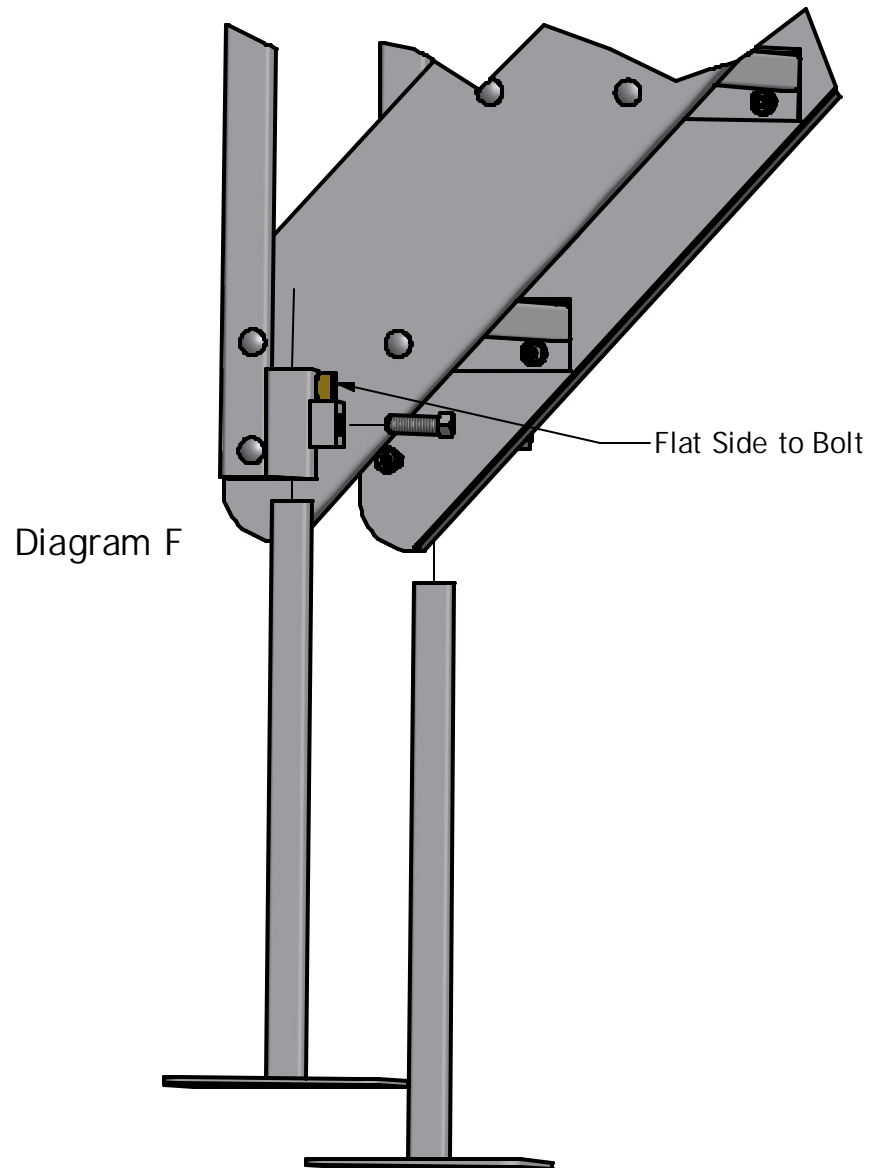


Diagram G

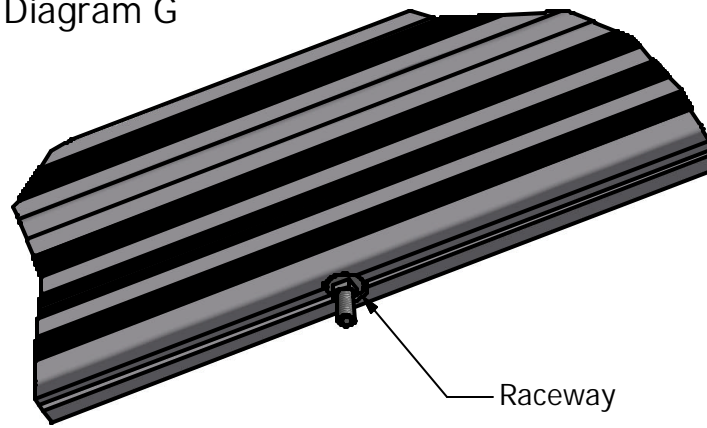


Diagram H-1

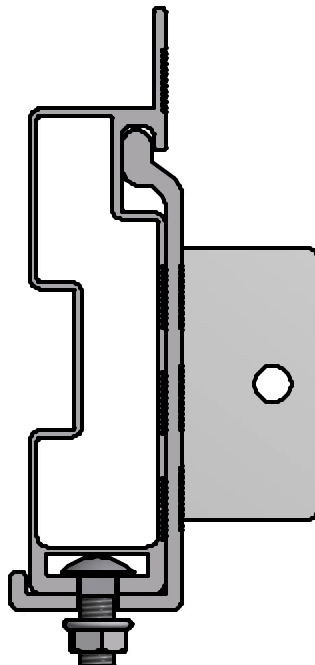


Diagram I

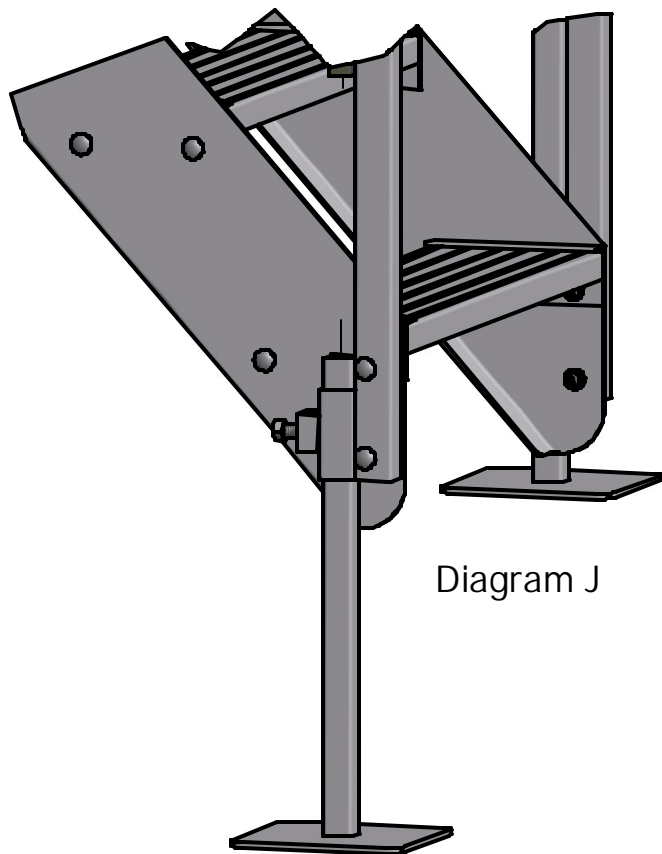
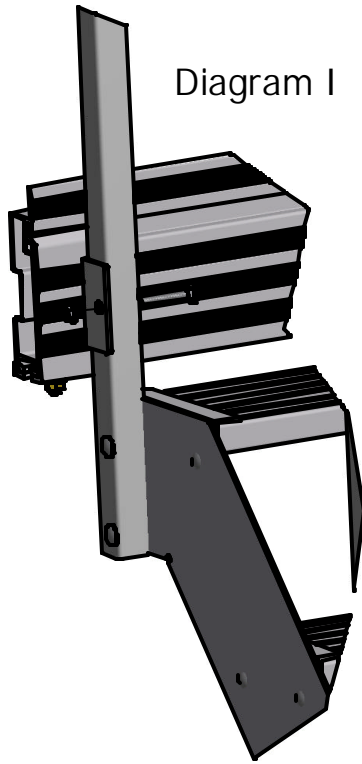


Diagram J

Diagram K

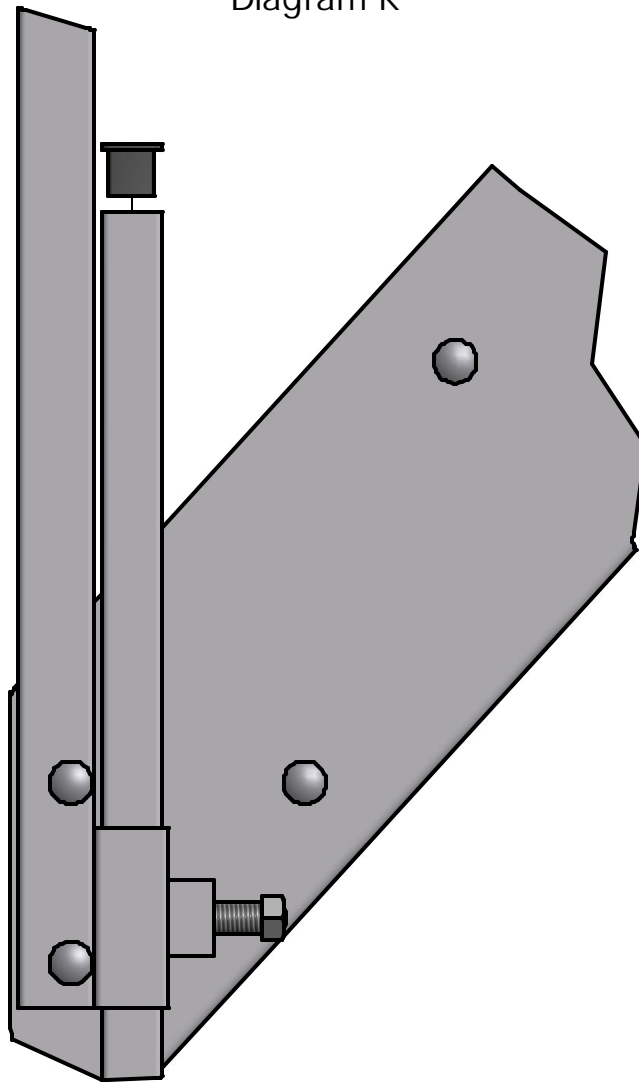


Diagram L

