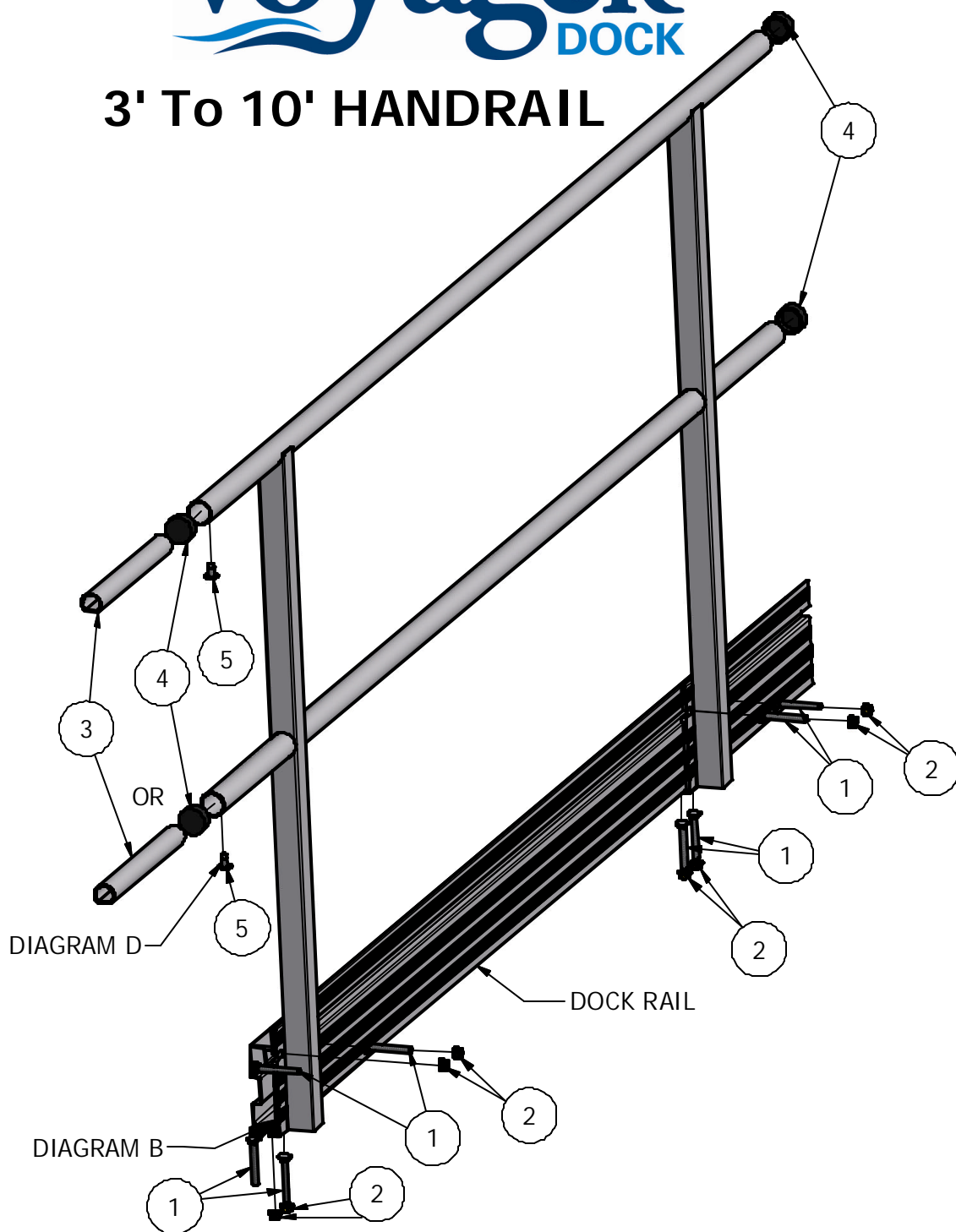


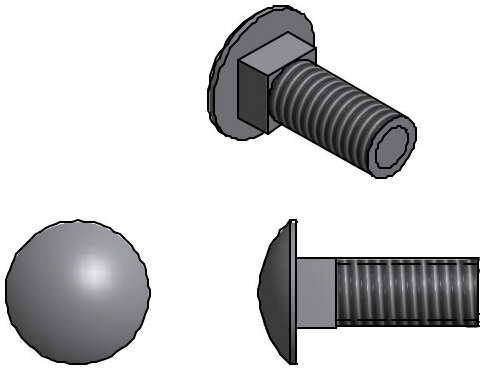


## 3' To 10' HANDRAIL



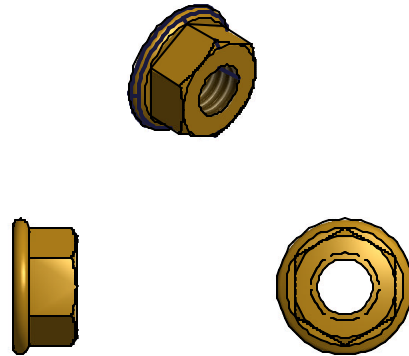
PARTS LIST				
ITEM	QTY	PART NUMBER	DESCRIPTION	
1	8	HD-00059	3/8 X 1 SS CARRIAGE	
2	8	HD-00056	3/8 BRASS FLANGE NUT	
3	2	VM-117-03	CONN TUBE	
4	4	HD-00140	CAP FOR 1 1/2" ROUND TUBE	
5	2	HD-00174	#10-1 x 1" SELFTAP SCREW S/S	

1



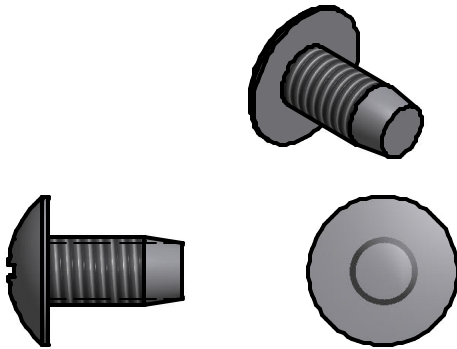
3/8 X 1 S.S. CARRIAGE BOLT (8 REQ'D)

2



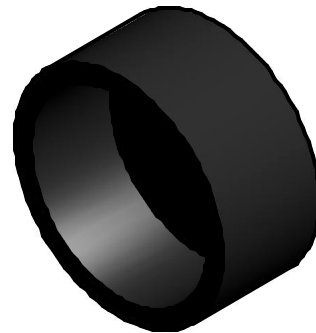
3/8 FLANGE NUT BRASS (8 REQ'D)

5



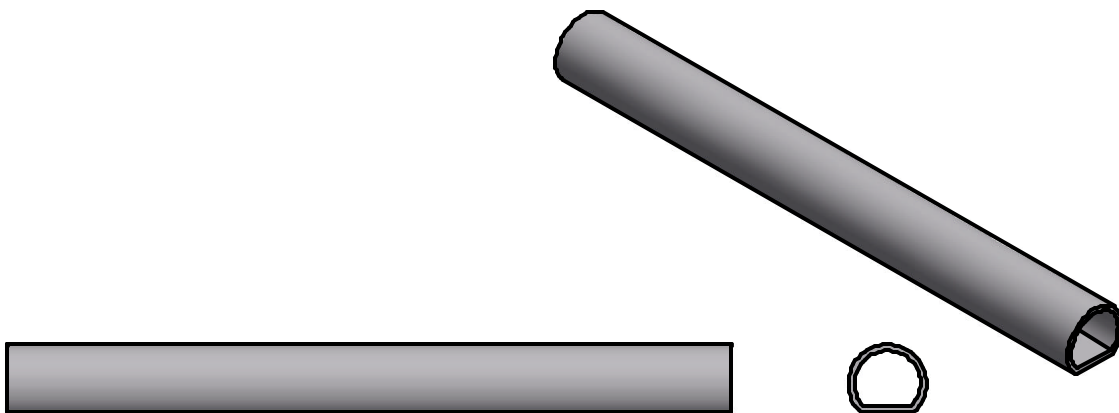
#10-1 X 1" SELFTAP SCREW S/S (2 REQ'D)

4



CAP FOR 1 1/2" ROUND TUBE (4 REQ'D)

3



CONNECTOR TUBE (2 REQ'D)

**To insure your safety while assembling your Voyager product:**

- Fully read and understand the assembly instructions
- Do not assemble this product if items are missing or damaged
- Wear protective gloves, clothing and eye wear when assembling this product
- Check tightness of all hardware each year to avoid injury

**Installation procedure**

The following tools will be needed: 9/16" wrench, (Phillips screw driver or cordless drill with Phillips bit when installing multiple handrails).

1. Insert head of carriage bolts into raceway on the underside of the dock rail and slide to desired location on dock. **Per diagram A.**
2. Slide handrail assembly into dock rail and put carriage bolts into bracket and attach flange nuts. **Per diagram B.**
3. Slide carriage bolt into the handrail bracket and attach flange nuts.
4. Take 9/16" wrench and tighten flange nut.
5. If installing single handrail attach caps onto the ends of handrail tubes. If installing multiple handrails leave caps off at this time and proceed to next steps.
6. If installing multiple handrails together insert connector tube into the one end of the upper and lower hand rail tubes of the first handrail (leave half of each connector stick out). Insert self tapping screw into each handrail tube and tighten up. **Per detail C.**
7. Repeat step 1 for next handrail.
8. Slide next handrail onto dock rail and slide onto connector tubes of first handrail.
9. Repeat steps 2 & 3.
10. Install self tapping screws into each handrail tube of second handrail to connector tube of first hand rail. **Per diagram D.**
11. If installing additional handrails, repeat steps 6-10. If completed go to step 12.
12. Once all handrails are in place install caps onto all open ends of handrail tubes.

