

K	15543	KMH	07-09-12	310-01903 REPLACED 310-02255
J	15342	MJH	02-14-12	210-00384 AND 210-00340 REPLACED 210-00268; UPDATED DIMENSIONS ON PAGES 4 AND 5.
DWG. REV.	ECR/NDR NUMBER	REVISED BY	DATE	DESCRIPTION

ALL DIMENSIONS ARE IN INCHES
UNLESS OTHERWISE STATED
TOLERANCES EXCEPT AS NOTED

DECIMALS:
.X ±0.100
.XX ±0.060
.XXX ±0.030
.XXXX ±0.010

ANGLES:
±1°

ALL FORMED ANGLES
EQUAL 90° UNLESS
NOTED OTHERWISE

() INDICATES REFERENCE

THE INFORMATION IN THIS DRAWING IS THE SOLE
PROPERTY OF KARAVAN TRAILERS, INC. ANY
REPRODUCTION IN PART OR WHOLE WITHOUT
THE WRITTEN PERMISSION OF KARAVAN TRAILERS,
INC. IS PROHIBITED.

APPROVED BY:

DRAWN BY:
MATTHEW HALFMANN

DATE: 03-19-07

SHEET: 1 OF 6

SCALE: N/A

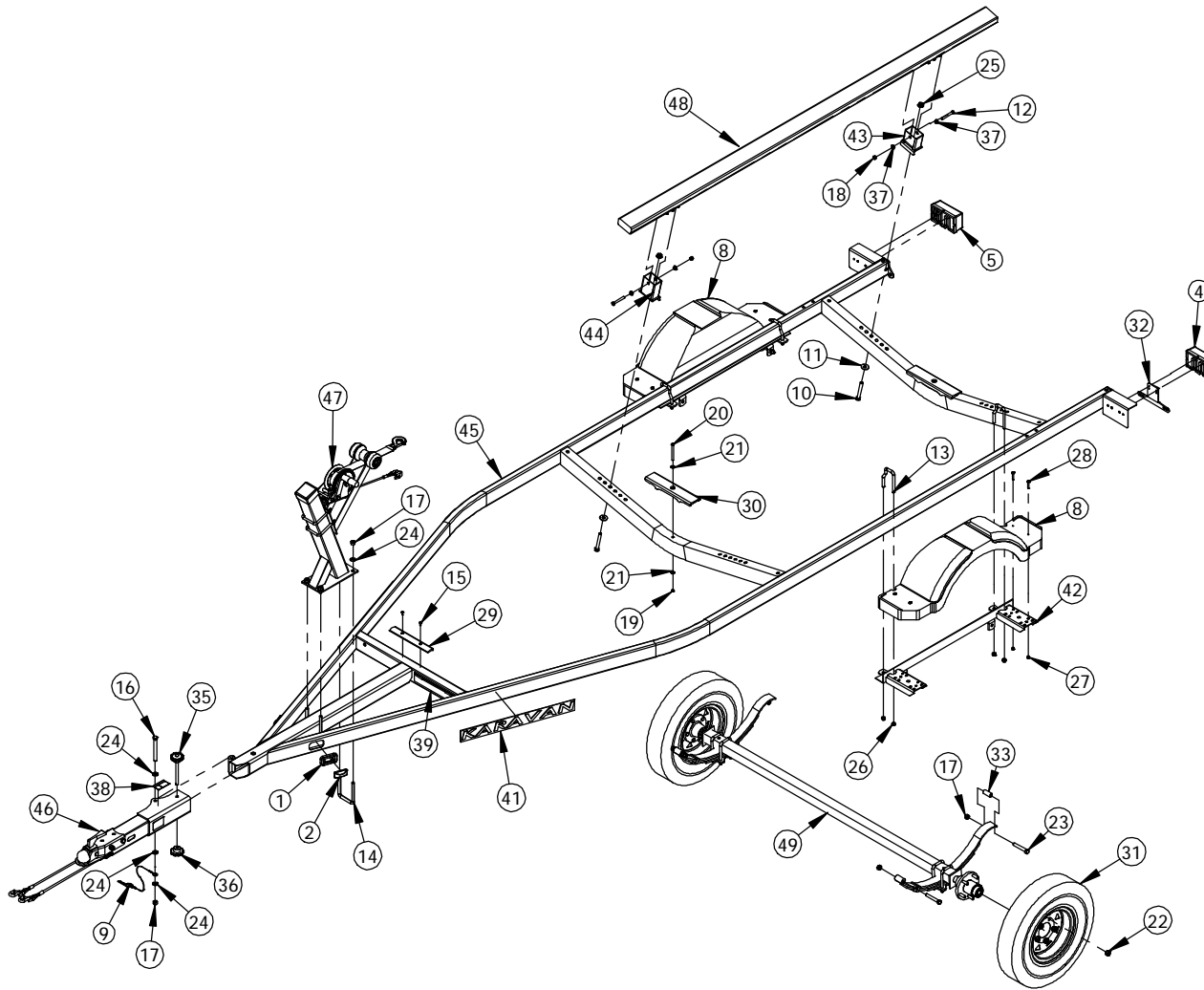
KARAVAN
TRAILERS

TITLE: KCB-1600-60

MAT'L: SEE B.O.M.

FINISH: N/A

DWG. #: KCB-1600-60



ITEM NO.	SEE NOTES	PART NUMBER	DESCRIPTION	QTY.
1		205-00046	SNAP-LOC GROMMET	2
2	2	205-00126	SNAP-LOC LIGHT	2
3		205-00142	AMBER REFLECTOR TAPE	2
4	2	205-00159	TAIL LIGHT LH (LED)	1
5	2	205-00160	TAIL LIGHT RH (LED)	1
6	2	205-00168	WIRE HARNESS	1
7	2	205-00210	PIGTAIL	2
8		206-00056	FENDER	2
9		207-00020	PIN & LANYARD	1
10		210-00014	.50"-13 X 4.00" HX HD BOLT	4
11		210-00017	.50" FLAT WASHER	4
12		210-00023	.375"-16 X 2.75" HX HD BOLT	4
13		210-00024	.438" X 4.25" FLARED U-BOLT	4
14		210-00029	.50"-13 X 3.063" X 4.50" U-BOLT	2
15		210-00057	#10 X .625" HX WSHR HD SCREW	2
16		210-00060	.50"-13 X 5.00" HX HD BOLT	1
17		210-00061	.50"-13 CENTERLOCK HEX NUT	9
18		210-00076	.375"-16 CENTERLOCK HEX NUT	4
19		210-00085	.25"-20 CENTER LOCK NUT	2
20		210-00123	.25"-20 X 3.50" TAP BOLT	2
21		210-00136	.25" FLAT WASHER	4
22		210-00137	.50"-20 X .813" LUG NUT	10
23		210-00230	.50"-13 X 3.25" HX HD BOLT	4
24		210-00240	.50" SAE FLAT WASHER ZINC	7
25		210-00265	.50"-13 CTRLCK FLANGE NUT	4
26		210-00330	.438"-14 CENTERLOCK HEX NUT	8
27		210-00340	.250"-20 NYLOCK HEX NUT	8
28		210-00384	SCREW 6 LOBE TRUSS HD 1/4"-20 X 1-1/2"	8
29		216-00019	KEEL PROTECTOR	1
30		216-00034	KEEL PROTECTOR	2
31		220-00018	4.8 X 12B 5H	2
32		229-00006	LICENSE PLATE BRACKET	1
33		229-00096	BUSHING	2
34	2	229-00245	.375" LOOM	1
35		229-00287	HAND BOLT	1
36		229-00289	HAND NUT	1
37		229-00329	NYLON WASHER	8
38		234-00023	PINCH POINT LOGO	1
39		234-00032	TRAILERING CHECKLIST	1
40		234-00058	LOGO	4
41		234-00060	LOGO	2
42		300-00987	SPRING HANGER WELDMENT	2
43	1	300-01546	BUNK TUBE WELD (3" TALL)	2
44	1	300-01547	BUNK TUBE WELD (4" TALL)	2
45		300-01790	FRAME WELDMENT	1
46	1	310-01825	TONGUE SUB-ASSY	1
47		310-01903	WINCH ASSY	1
48	1	310-02197	BUNK ASSY	2
49		310-02245	AXLE ASSY	1

NOTES:

- 1.) SEE ADDITIONAL INSTRUCTIONS ON PAGE SIX.
- 2.) SEE ADDITIONAL INSTRUCTIONS ON PAGE THREE.

K	15543	KMH	07-09-12	310-01903 REPLACED 310-02255
J	15342	MJH	02-14-12	210-00384 AND 210-00340 REPLACED 210-00268; UPDATED DIMENSIONS ON PAGES 4 AND 5.
DWG. REV.	ECR/NDR NUMBER	REVISED BY	DATE	DESCRIPTION

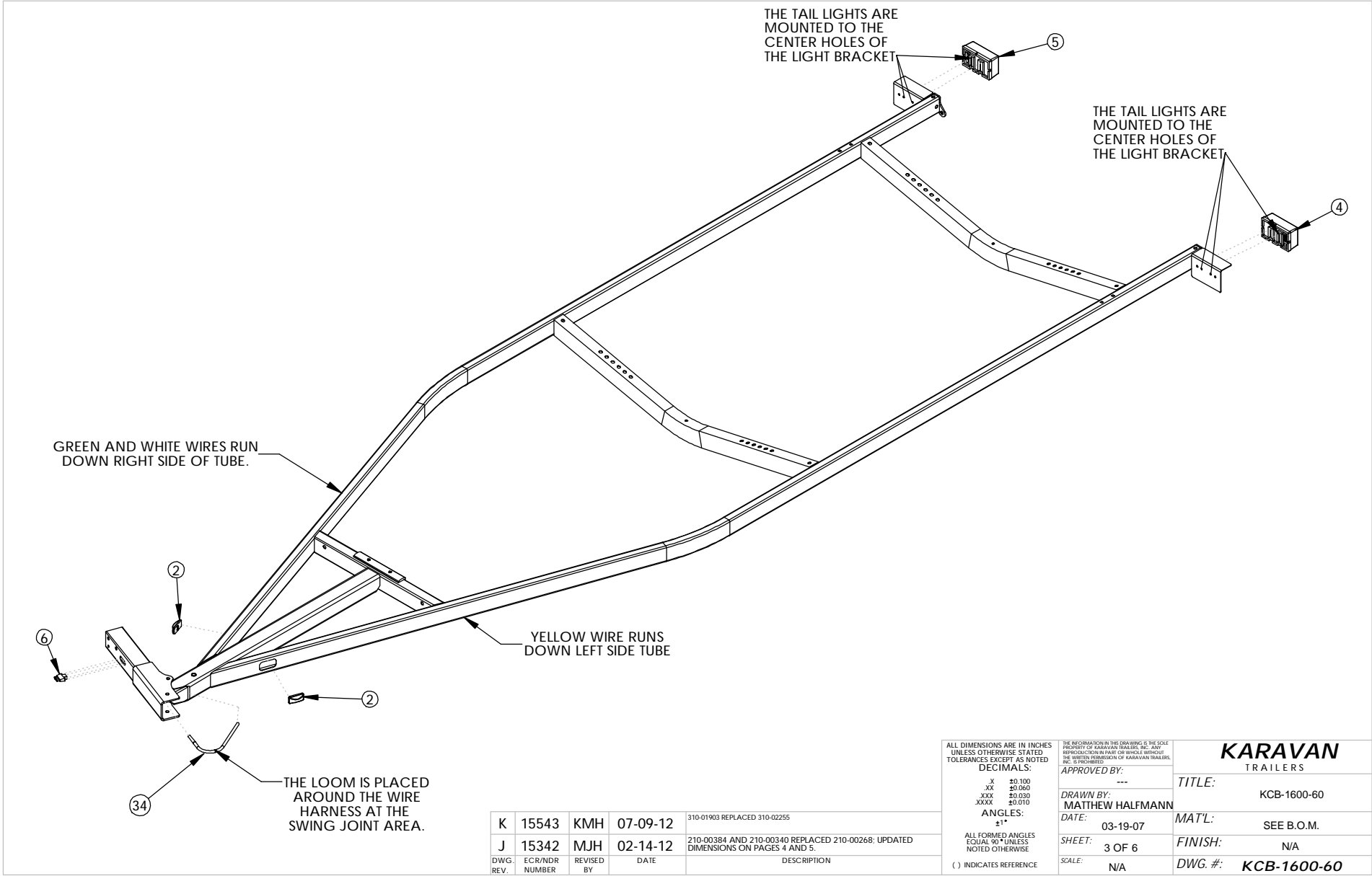
ALL DIMENSIONS ARE IN INCHES
UNLESS OTHERWISE STATED
TOLERANCES EXCEPT AS NOTED
DECIMALS:
.X ±0.100
XX ±0.060
XXX ±0.030
XXXX ±0.010
ANGLES:
±1°
ALL FORMED ANGLES
EQUAL 90° UNLESS
NOTED OTHERWISE
() INDICATES REFERENCE

THE INFORMATION IN THIS DRAWING IS THE SOLE
PROPERTY OF KARAVAN TRAILERS, INC. ANY
REPRODUCTION IN PART OR WHOLE WITHOUT
THE WRITTEN PERMISSION OF KARAVAN TRAILERS,
APPROVED BY:

DRAWN BY:
MATTHEW HALFMANN
DATE:
03-19-07
SHEET:
2 OF 6
SCALE:
N/A

KARAVAN
TRAILERS

TITLE:
KCB-1600-60
MAT'L:
SEE B.O.M.
FINISH:
N/A
DWG. #: **KCB-1600-60**



K	15543	KMH	07-09-12	310-01903 REPLACED 310-02255
J	15342	MJH	02-14-12	210-00384 AND 210-00340 REPLACED 210-00268; UPDATED DIMENSIONS ON PAGES 4 AND 5.
DWG. REV.	ECR/NDR NUMBER	REVISED BY	DATE	DESCRIPTION

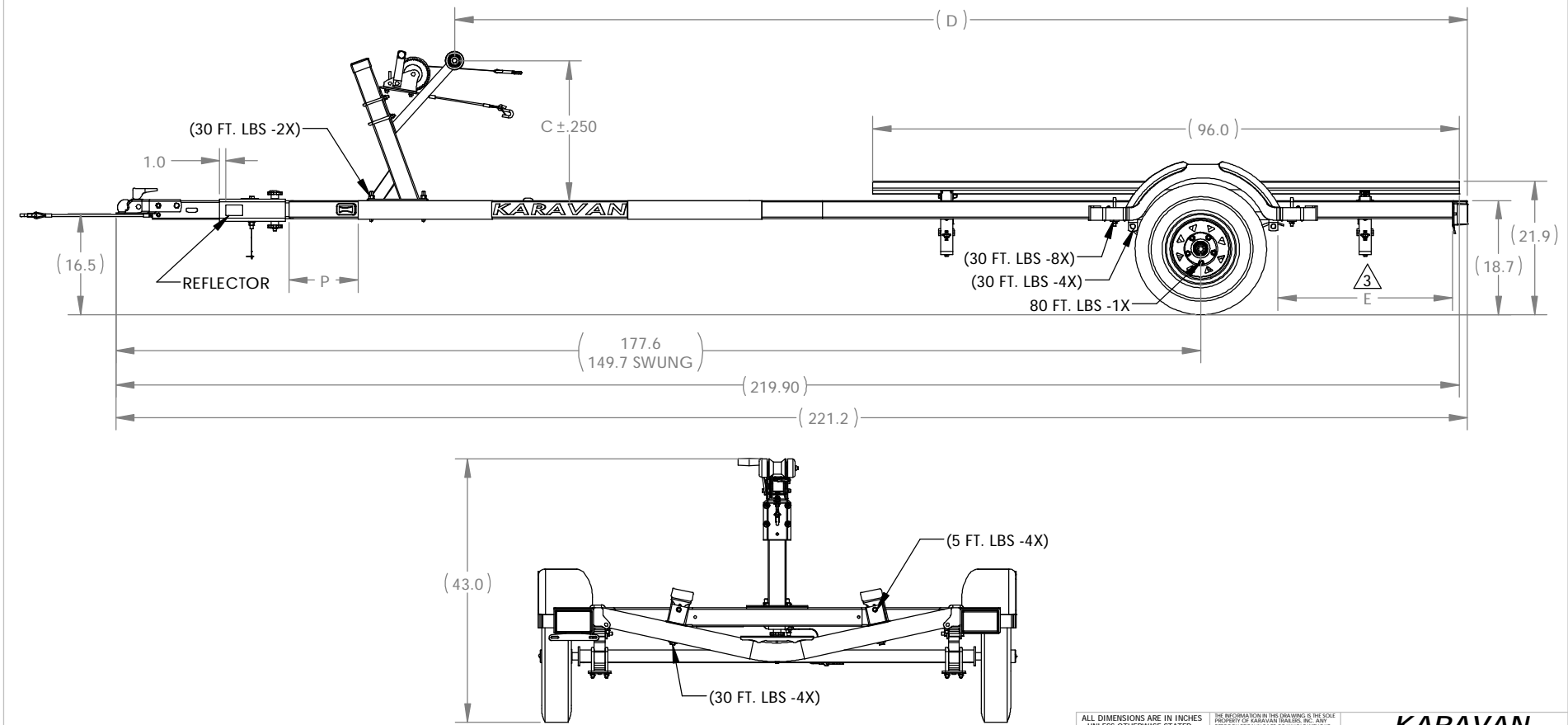
ALL DIMENSIONS ARE IN INCHES
UNLESS OTHERWISE STATED
TOLERANCES EXCEPT AS NOTED
DECIMALS:
.X ±0.100
.XX ±0.060
.XXX ±0.030
.XXXX ±0.010
ANGLES:
±1°
ALL FORMED ANGLES
EQUAL 90° UNLESS
NOTED OTHERWISE
() INDICATES REFERENCE

THE INFORMATION IN THIS DRAWING IS THE SOLE
PROPERTY OF KARAVAN TRAILERS, INC. ANY
REPRODUCTION IN PART OR WHOLE WITHOUT
THE WRITTEN PERMISSION OF KARAVAN TRAILERS,
INC. IS PROHIBITED.
APPROVED BY: ---
DRAWN BY: MATTHEW HALFMANN
DATE: 03-19-07
SHEET: 3 OF 6
SCALE: N/A

KARAVAN TRAILERS	
TITLE:	KCB-1600-60
MAT'L:	SEE B.O.M.
FINISH:	N/A
DWG. #:	KCB-1600-60

MODEL #	DIMENSIONS			
	"C"	"D"	"E"	"P"
	UP	REF	AXLE	LOGO
*	22.96	165.76	31.00	20.0

* TRAILER SET UP TO THESE DIMENSIONS



NOTES:

3. DIMENSION IS FROM BACK OF SPRING HANGER TO THE BACK OF THE FRAME.

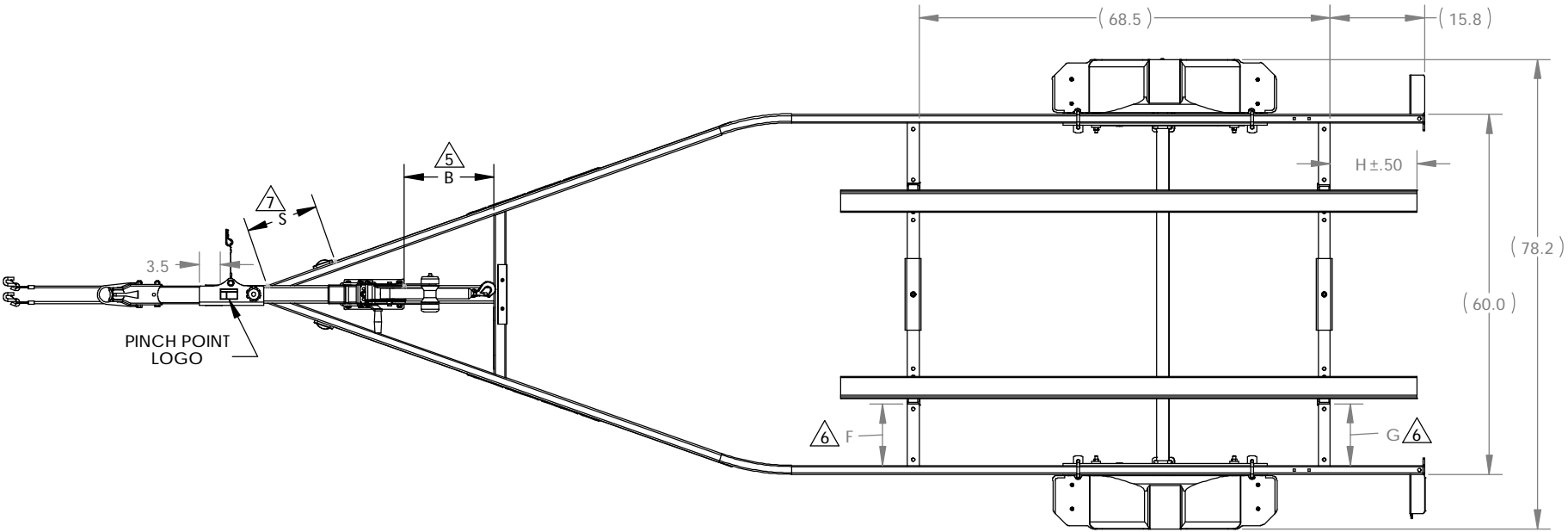
4.) TORQUE CALLOUTS IN PARENTHESIS ARE FOR REFERENCE. TIGHTEN FASTENERS UNTIL PINCHED TIGHT (DO NOT OVER TIGHTEN BUNK PIVOT POINTS). MINOR DEFLECTION OF MATERIAL IS ACCEPTABLE.

DWG. REV.	ECR/NDR NUMBER	REVISED BY	DATE	DESCRIPTION
K	15543	KMH	07-09-12	310-01903 REPLACED 310-02255
J	15342	MJH	02-14-12	210-00384 AND 210-00340 REPLACED 210-00268; UPDATED DIMENSIONS ON PAGES 4 AND 5.

ALL DIMENSIONS ARE IN INCHES UNLESS OTHERWISE STATED TOLERANCES EXCEPT AS NOTED		THE INFORMATION IN THIS DRAWING IS THE SOLE PROPERTY OF KARAVAN TRAILERS, INC. ANY REPRODUCTION IN PART OR WHOLE WITHOUT THE WRITTEN PERMISSION OF KARAVAN TRAILERS, INC. IS PROHIBITED.	
DECIMALS:		APPROVED BY: ---	
.X ±0.100		DRAWN BY: MATTHEW HALFMANN	
.XX ±0.060		DATE: 03-19-07	
.XXX ±0.030		SHEET: 4 OF 6	
.XXXX ±0.010		SCALE: N/A	
ANGLES: ±1°		TITLE: KCB-1600-60	
ALL FORMED ANGLES EQUAL 90° UNLESS NOTED OTHERWISE		MAT'L: SEE B.O.M.	
() INDICATES REFERENCE		FINISH: N/A	
		DWG. #: KCB-1600-60	

MODEL #	DIMENSIONS				
	"B"	"F"	"G"	"H"	"S"
	POST	FRONT	REAR	BACK	STAMP
*	15.0	10.5	10.6	14.8	12.0

* TRAILER SET UP TO THESE DIMENSIONS



NOTES:

- 5 WINCH LOCATION IS THE DISTANCE FROM THE WINCH MOUNTING PLATE TO THE FRONT OF THE A-BRACE.
- 6 BUNK LOCATION IS THE DISTANCE FROM THE INSIDE OF THE SIDE TUBE TO THE OUTSIDE EDGE OF THE BUNK BRACKET.
- 7 DIMENSION INDICATES THE SET LOCATION OF THE RIGHT EDGE OF THE PIN STAMPER.

K	15543	KMH	07-09-12	310-01903 REPLACED 310-02255
J	15342	MJH	02-14-12	210-00384 AND 210-00340 REPLACED 210-00268; UPDATED DIMENSIONS ON PAGES 4 AND 5.
DWG. REV.	ECR/NDR NUMBER	REVISED BY	DATE	DESCRIPTION

ALL DIMENSIONS ARE IN INCHES
UNLESS OTHERWISE STATED
TOLERANCES EXCEPT AS NOTED

DECIMALS:
.X ±0.100
.XX ±0.060
.XXX ±0.030
.XXXX ±0.010

ANGLES:
±1°

ALL FORMED ANGLES
EQUAL 90° UNLESS
NOTED OTHERWISE

() INDICATES REFERENCE

THE INFORMATION IN THIS DRAWING IS THE SOLE
PROPERTY OF KARAVAN TRAILERS, INC. ANY
REPRODUCTION IN PART OR WHOLE WITHOUT
THE WRITTEN PERMISSION OF KARAVAN TRAILERS,
INC. IS PROHIBITED.

APPROVED BY: ---

DRAWN BY: MATTHEW HALFMANN

DATE: 03-19-07

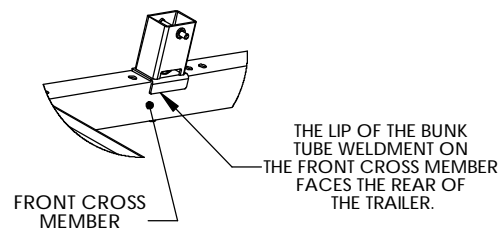
SHEET: 5 OF 6

SCALE: N/A

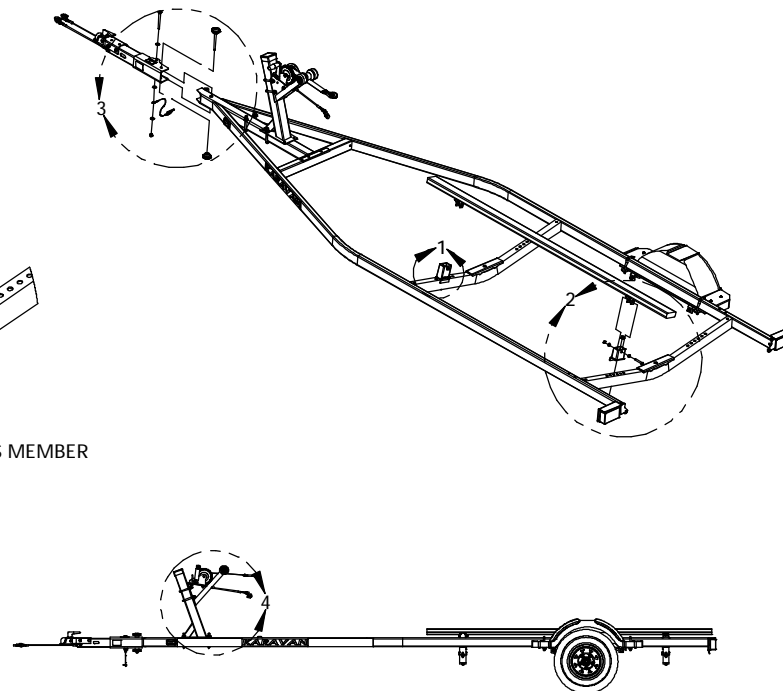
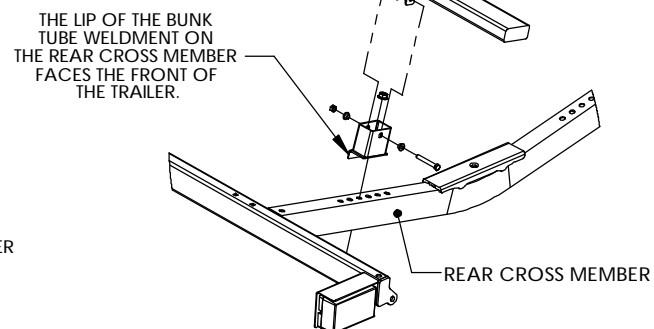
KARAVAN TRAILERS	
TITLE:	KCB-1600-60
MAT'L:	SEE B.O.M.
FINISH:	N/A
DWG. #:	KCB-1600-60

BUNK MOUNTING INSTRUCTIONS

VIEW 1

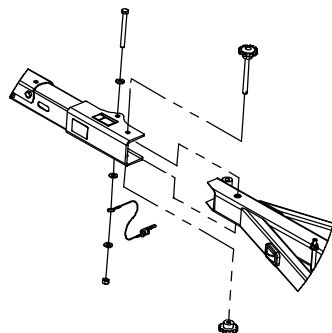


VIEW 2



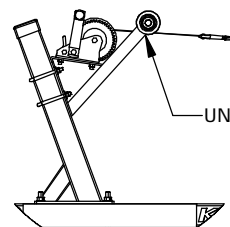
SWING TONGUE MOUNTING INSTRUCTIONS

VIEW 3



WINCH MOUNTING INSTRUCTIONS

VIEW 4



WINCH STRAP WITH HOOK RUNS UNDER THE ROLLER BEFORE BEING HOOKED TO THE BOW EYE OF THE BOAT

K	15543	KMH	07-09-12	310-01903 REPLACED 310-02255
J	15342	MJH	02-14-12	210-00384 AND 210-00340 REPLACED 210-00268; UPDATED DIMENSIONS ON PAGES 4 AND 5.
DWG. REV.	ECR/NDP NUMBER	REVISED BY	DATE	DESCRIPTION

ALL DIMENSIONS ARE IN INCHES
UNLESS OTHERWISE STATED
TOLERANCES EXCEPT AS NOTED
DECIMALS:
.X ±0.100
.XX ±0.060
.XXX ±0.030
.XXXX ±0.010
ANGLES:
±1°
ALL FORMED ANGLES
EQUAL 90° UNLESS
NOTED OTHERWISE
() INDICATES REFERENCE

THE INFORMATION IN THIS DRAWING IS THE SOLE
PROPERTY OF KARAVAN TRAILERS, INC. ANY
REPRODUCTION IN PART OR WHOLE WITHOUT
THE WRITTEN PERMISSION OF KARAVAN TRAILERS,
INC. IS PROHIBITED.
APPROVED BY: ---
DRAWN BY: MATTHEW HALFMANN
DATE: 03-19-07
SHEET: 6 OF 6
SCALE: N/A

KARAVAN
TRAILERS

TITLE: KCB-1600-60
MAT'L: SEE B.O.M.
FINISH: N/A
DWG. #: KCB-1600-60