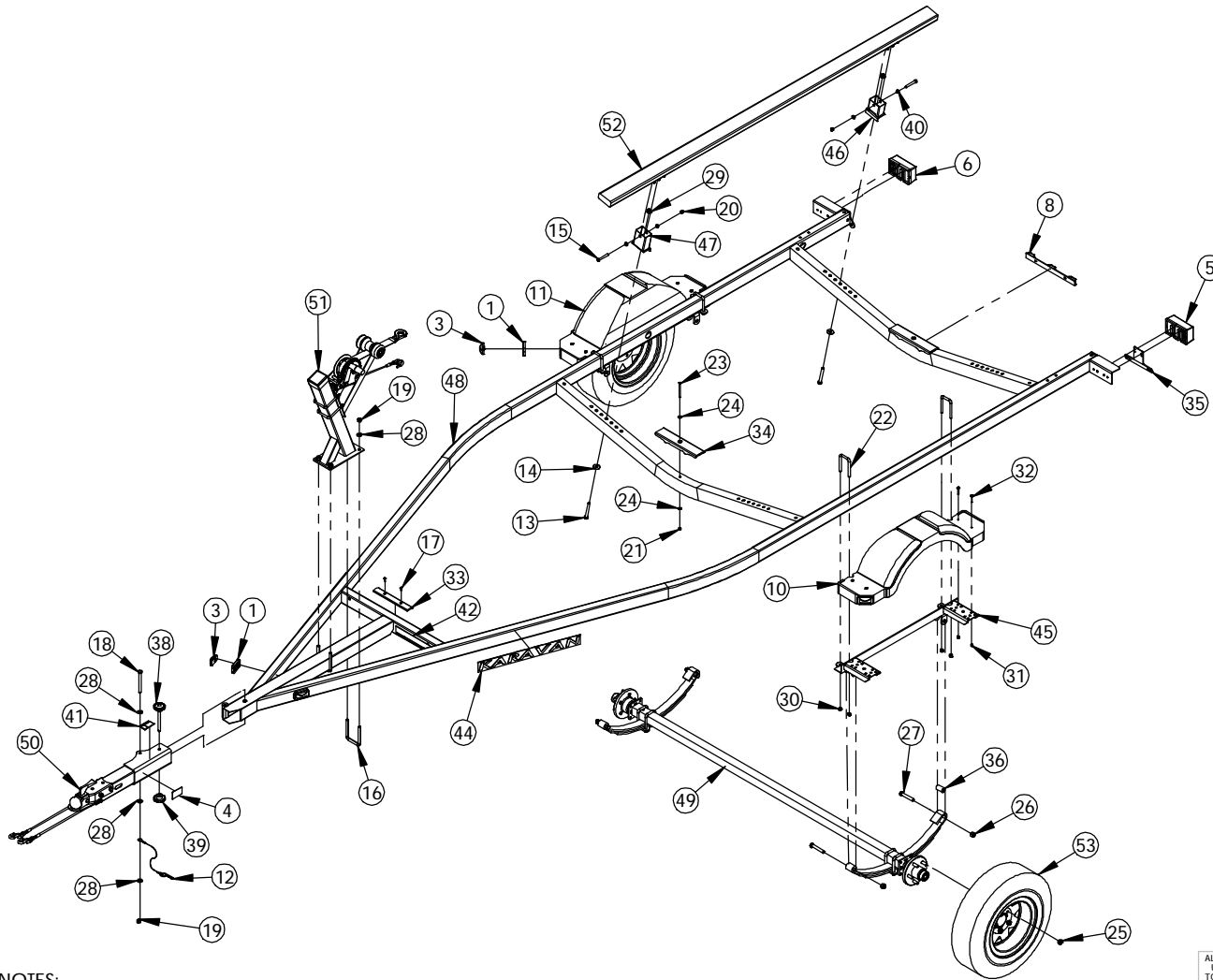


L	15543	KMH	07-09-12	310-01903 REPLACED 310-02255
K	15342	MJH	02-14-12	210-00340 AND 210-00384 REPLACED 210-00268; UPDATED DIMENSIONS ON PAGES 5 AND 6.
DWG. REV.	ECR/NDR NUMBER	REVISED BY	DATE	DESCRIPTION

ALL DIMENSIONS ARE IN INCHES UNLESS OTHERWISE STATED TOLERANCES EXCEPT AS NOTED		THE INFORMATION IN THIS DRAWING IS THE SOLE PROPERTY OF KARAVAN TRAILERS, INC. ANY REPRODUCTION IN PART OR WHOLE WITHOUT THE WRITTEN PERMISSION OF KARAVAN TRAILERS, INC. IS PROHIBITED.		KARAVAN TRAILERS	
DECIMALS: .X ±0.100 .XX ±0.060 .XXX ±0.030 .XXXX ±0.010		APPROVED BY: ---		TITLE: KCB-2200-74	
ANGLES: ±1°		DRAWN BY: MJ HALFMANN		MAT'L: SEE B.O.M.	
ALL FORMED ANGLES EQUAL 90° UNLESS NOTED OTHERWISE		DATE: 12-01-06		FINISH: N/A	
() INDICATES REFERENCE		SHEET: 1 OF 7		DWG. #: KCB-2200-74	
		SCALE: N/A			



ITEM NO.	SEE NOTES	PART NUMBER	DESCRIPTION	QTY.
1		205-00046	SNAP-LOC GROMMET	4
2	2	205-00113	PIGTAIL W/ PLUGS	2
3	2	205-00126	SNAP-LOC LIGHT	4
4		205-00142	AMBER REFLECTOR TAPE	2
5	2	205-00161	TAIL LIGHT LH (LED)	1
6	2	205-00162	TAIL LIGHT RH (LED)	1
7	2	205-00168	WIRE HARNESS	1
8	2	205-00176	I.D. BAR LIGHT SUBM.	1
9	2	205-00210	PIGTAIL	2
10		206-00085	FENDER (LH)	1
11		206-00086	FENDER (RH)	1
12		207-00020	PIN & LANYARD	1
13		210-00014	.50"-13 X 4.00" HX HD BOLT	4
14		210-00017	.50" FLAT WASHER	4
15		210-00023	.375"-16 X 2.75" HX HD BOLT	4
16		210-00029	.50"-13 X 3.063" X 4.50" U-BOLT	2
17		210-00057	#10 X .625" HX WSHR HD SCREW	2
18		210-00060	.50"-13 X 5.00" HX HD BOLT	1
19		210-00061	.50"-13 CENTERLOCK HEX NUT	5
20		210-00076	.375"-16 CENTERLOCK HEX NUT	4
21		210-00085	.25"-20 CENTERLOCK NUT	2
22		210-00087	.438"-14 X 2.25" X 4.00" U-BOLT	4
23		210-00123	.25"-20 X 3.50" TAP BOLT	2
24		210-00136	.25" FLAT WASHER	4
25		210-00137	.50"-20 X 813" LUG NUT	10
26		210-00157	.563"-12 NYLOCK HEX NUT	4
27		210-00211	.563"-12 X 3.25" HX HD BOLT	4
28		210-00240	.50" SAE FLAT WASHER ZINC	7
29		210-00265	.50"-13 CTRLOCK FLANGE NUT	4
30		210-00330	.438"-14 CENTERLOCK HEX NUT	8
31		210-00340	.250"-20 NYLOCK HEX NUT	8
32		210-00384	SCREW 6 LOBE TRUSS HD 1/4"-20 X 1-1/2"	8
33		216-00019	KEEL PROTECTOR	1
34		216-00034	KEEL PROTECTOR	2
35		229-00006	LICENSE PLATE BRACKET	1
36		229-00095	BUSHING	2
37	2	229-00245	.375" LOOM	1
38		229-00287	HAND BOLT	1
39		229-00289	HAND NUT	1
40		229-00329	NYLON WASHER	8
41		234-00023	PINCH POINT LOGO	1
42		234-00032	TRAILERING CHECKLIST	1
43		234-00058	LOGO	4
44		234-00060	LOGO	2
45		300-01130	SPRING HANGER WELDMENT	2
46	3	300-01546	BUNK TUBE WELD (3" TALL)	2
47	3	300-01547	BUNK TUBE WELD (4" TALL)	2
48		300-01779	FRAME WELDMENT	1
49		310-01262	AXLE ASSY W/ SPRING	1
50	3	310-01825	TONGUE SUB-ASSY	1
51	3	310-01903	WINCH ASSY	1
52	3	310-02197	BUNK ASSY	2
53	1	TIRE	SEE OPTIONS	2

NOTES:

- 1.) SEE OPTIONS ON PAGE THREE.
- 2.) SEE ADDITIONAL INSTRUCTIONS ON PAGE FOUR.
- 3.) SEE ADDITIONAL INSTRUCTIONS ON PAGE SEVEN.

L	15543	KMH	07-09-12	310-01903 REPLACED 310-02255
K	15342	MJH	02-14-12	210-00340 AND 210-00384 REPLACED 210-00268; UPDATED DIMENSIONS ON PAGES 5 AND 6.
DWG. REV.	ECR/NDP NUMBER	REVISED BY	DATE	DESCRIPTION

ALL DIMENSIONS ARE IN INCHES
UNLESS OTHERWISE STATED
TOLERANCES EXCEPT AS NOTED
DECIMALS:
.X ±0.100
.XX ±0.060
.XXX ±0.030
XXXX ±0.010
ANGLES:
±1°
ALL FORMED ANGLES
EQUAL 90° UNLESS
NOTED OTHERWISE
() INDICATES REFERENCE

THE INFORMATION IN THIS DRAWING IS THE SOLE
PROPERTY OF KARAVAN TRAILERS, INC. ANY
REPRODUCTION IN PART OR WHOLE WITHOUT
THE WRITTEN PERMISSION OF KARAVAN TRAILERS.
APPROVED BY:

DRAWN BY:
M/ HALFMAN
DATE: 12-01-06
SHEET: 2 OF 7
SCALE: N/A

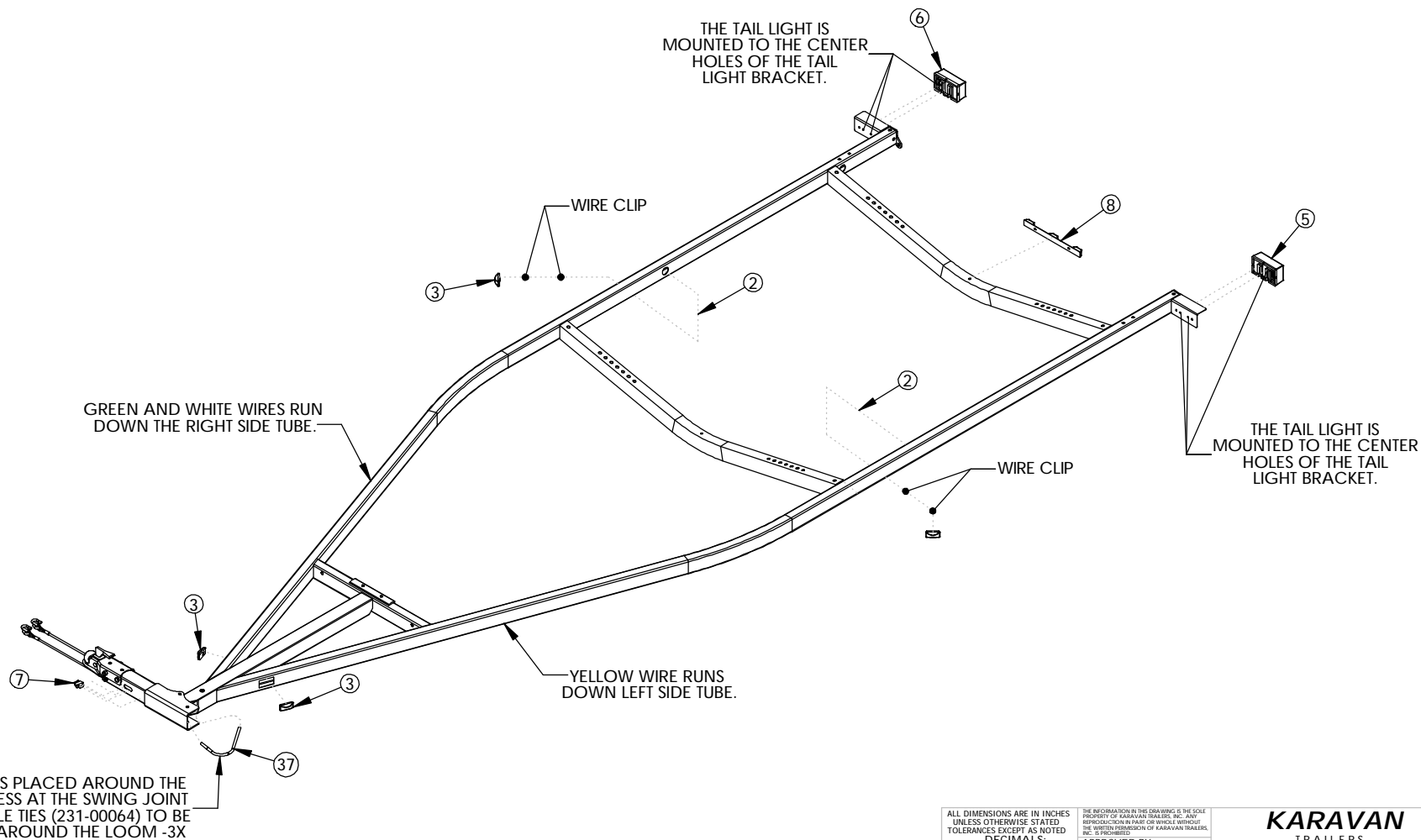
KARAVAN
TRAILERS

TITLE:
KCB-2200-74
MAT'L: SEE B.O.M.
FINISH: N/A
DWG. #: KCB-2200-74

OPTIONS		
KCB-2200-74 ST175/80R13C	PARTS	KCB-2200-74 ST175/80D13C
220-00035	TIRES	220-00025

L	15543	KMH	07-09-12	310-01903 REPLACED 310-02255
K	15342	MJH	02-14-12	210-00340 AND 210-00384 REPLACED 210-00268; UPDATED DIMENSIONS ON PAGES 5 AND 6.
DWG. REV.	ECR/NDR NUMBER	REVISED BY	DATE	DESCRIPTION

ALL DIMENSIONS ARE IN INCHES UNLESS OTHERWISE STATED TOLERANCES EXCEPT AS NOTED		THE INFORMATION IN THIS DRAWING IS THE SOLE PROPERTY OF KARAVAN TRAILERS, INC. ANY REPRODUCTION IN PART OR WHOLE WITHOUT THE WRITTEN PERMISSION OF KARAVAN TRAILERS, INC. IS PROHIBITED.		KARAVAN TRAILERS	
DECIMALS: .X ±0.100 .XX ±0.060 .XXX ±0.030 .XXXX ±0.010		APPROVED BY: ---		TITLE: KCB-2200-74	
ANGLES: ±1°		DRAWN BY: M. HALFMANN		DATE: 12-01-06	
ALL FORMED ANGLES EQUAL 90° UNLESS NOTED OTHERWISE		SHEET: 3 OF 7		MATERIAL: SEE B.O.M.	
() INDICATES REFERENCE		SCALE: N/A		FINISH: N/A	
				DWG. #: KCB-2200-74	



L	15543	KMH	07-09-12	310-01903 REPLACED 310-02255
K	15342	MJH	02-14-12	210-00340 AND 210-00384 REPLACED 210-00268; UPDATED DIMENSIONS ON PAGES 5 AND 6.
DWG. REV.	ECR/NDP NUMBER	REVISED BY	DATE	DESCRIPTION

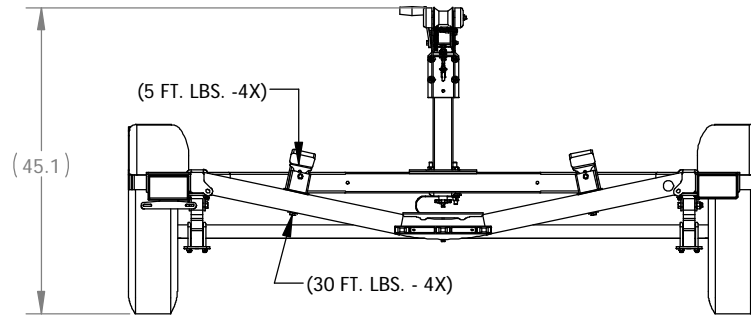
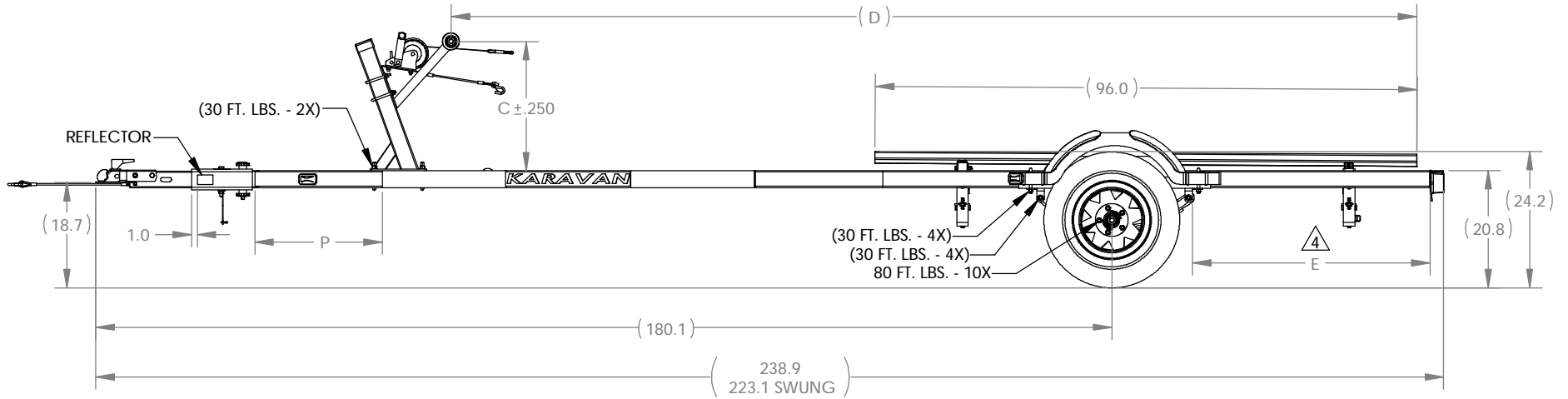
ALL DIMENSIONS ARE IN INCHES
UNLESS OTHERWISE STATED
TOLERANCES EXCEPT AS NOTED
DECIMALS:
.X ±0.100
.XX ±0.060
.XXX ±0.030
.XXXX ±0.010
ANGLES:
±1°
ALL FORMED ANGLES
EQUAL 90° UNLESS
NOTED OTHERWISE
() INDICATES REFERENCE

THE INFORMATION IN THIS DRAWING IS THE SOLE
PROPERTY OF KARAVAN TRAILERS, INC. ANY
REPRODUCTION IN PART OR WHOLE WITHOUT
THE WRITTEN PERMISSION OF KARAVAN TRAILERS,
INC. IS PROHIBITED.
APPROVED BY: ---
DRAWN BY: MJ HALFMAN
DATE: 12-01-06
SHEET: 4 OF 7
SCALE: N/A

KARAVAN TRAILERS	
TITLE:	KCB-2200-74
MAT'L:	SEE B.O.M.
FINISH:	N/A
DWG. #:	KCB-2200-74

Model #	Dimensions			
	"C"	"D"	"E"	"P"
	UP	REF.	AXLE	LOGO
*	22.96	171.1	35.00	32.0

* TRAILER SET UP TO THESE DIMENSIONS



NOTE:

4 DIMENSION IS FROM THE BACK OF THE SPRING HANGER TO THE END OF THE SIDE TUBE.

5.) TORQUE CALLOUTS IN PARENTHESIS ARE FOR REFERENCE. TIGHTEN FASTENERS UNTIL PINCHED TIGHT (DO NOT OVER TIGHTEN BUNK PIVOT POINTS). MINOR DEFLECTION OF MATERIAL IS ACCEPTABLE.

L	15543	KMH	07-09-12	310-01903 REPLACED 310-02255
K	15342	MJH	02-14-12	210-00340 AND 210-00384 REPLACED 210-00268; UPDATED DIMENSIONS ON PAGES 5 AND 6.
DWG. REV.	ECR/NDR NUMBER	REVISED BY	DATE	DESCRIPTION

ALL DIMENSIONS ARE IN INCHES
UNLESS OTHERWISE STATED
TOLERANCES EXCEPT AS NOTED

DECIMALS:

.X ±0.100
.XX ±0.060
.XXX ±0.030
.XXXX ±0.010

ANGLES:
±1°

ALL FORMED ANGLES
EQUAL 90° UNLESS
NOTED OTHERWISE

() INDICATES REFERENCE

THE INFORMATION IN THIS DRAWING IS THE SOLE
PROPERTY OF KARAVAN TRAILERS, INC. ANY
REPRODUCTION IN PART OR WHOLE WITHOUT
THE WRITTEN PERMISSION OF KARAVAN TRAILERS,
INC. IS PROHIBITED.

APPROVED BY:

DRAWN BY:

MJHALFMANN

DATE: 12-01-06

SHEET: 5 OF 7

SCALE: N/A

KARAVAN
TRAILERS

TITLE: KCB-2200-74

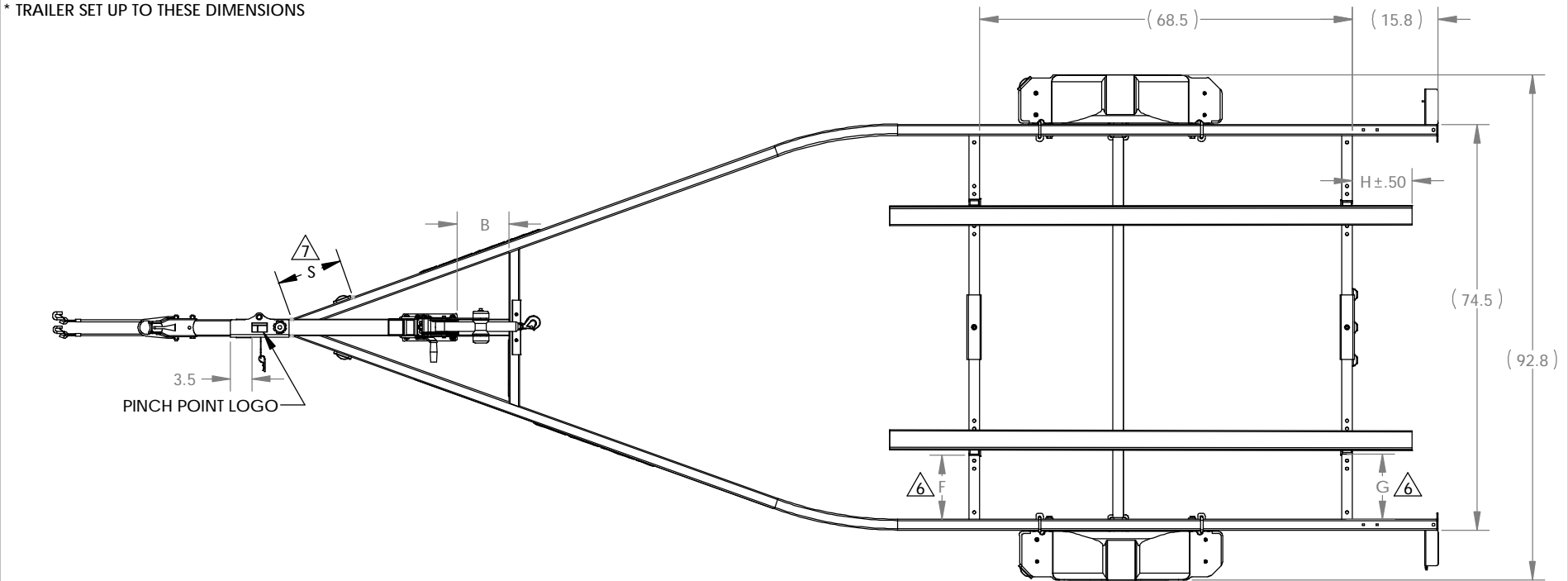
MAT'L: SEE B.O.M.

FINISH: N/A

DWG. #: KCB-2200-74

Model #	DIMENSIONS				
	"B"	"F"	"G"	"H"	"S"
	POST	FRONT	REAR	BACK	STAMP
- - -	9.5	13.0	13.0	11.1	12.0

* TRAILER SET UP TO THESE DIMENSIONS

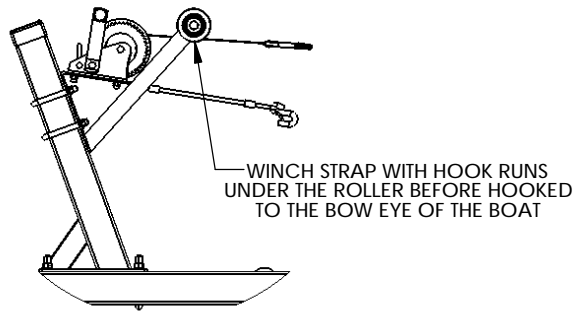


- NOTES:
- 6** BUNK LOCATION IS THE DISTANCE FROM THE INSIDE OF THE SIDE TUBE TO THE OUTSIDE EDGE OF THE BUNK TUBE WELDMENT.
 - 7** DIMENSION INDICATES THE SET LOCATION OF THE RIGHT EDGE OF THE PIN STAMPER.

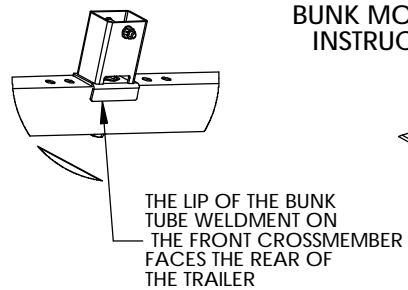
L	15543	KMH	07-09-12	310-01903 REPLACED 310-02255
K	15342	MJH	02-14-12	210-00340 AND 210-00384 REPLACED 210-00268; UPDATED DIMENSIONS ON PAGES 5 AND 6.
DWG. REV.	ECR/NDR NUMBER	REVISED BY	DATE	DESCRIPTION

ALL DIMENSIONS ARE IN INCHES UNLESS OTHERWISE STATED TOLERANCES EXCEPT AS NOTED		THE INFORMATION IN THIS DRAWING IS THE SOLE PROPERTY OF KARAVAN TRAILERS, INC. ANY REPRODUCTION IN PART OR WHOLE WITHOUT THE WRITTEN PERMISSION OF KARAVAN TRAILERS, INC. IS PROHIBITED.	
DECIMALS:		APPROVED BY: ---	
.X ±0.100		DRAWN BY: MJ/HALFMANN	
.XX ±0.060		DATE: 12-01-06	
.XXX ±0.030		SHEET: 6 OF 7	
.XXXX ±0.010		SCALE: N/A	
ANGLES: ±1°		TITLE: KCB-2200-74	
ALL FORMED ANGLES EQUAL 90° UNLESS NOTED OTHERWISE		MAT'L: SEE B.O.M.	
() INDICATES REFERENCE		FINISH: N/A	
		DWG. #: KCB-2200-74	

VIEW 1

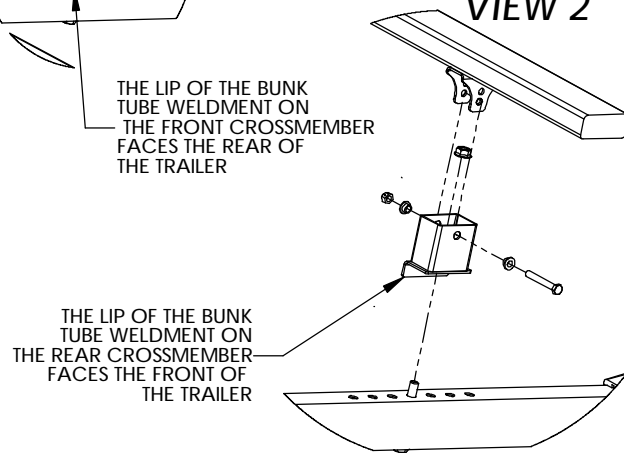


VIEW 3



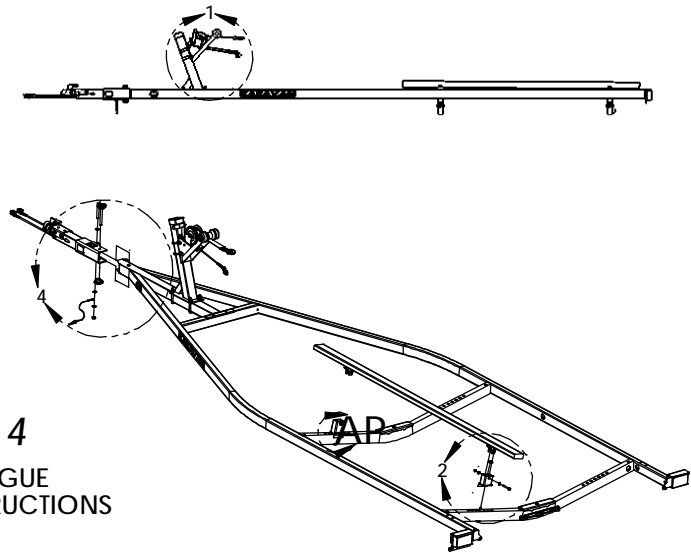
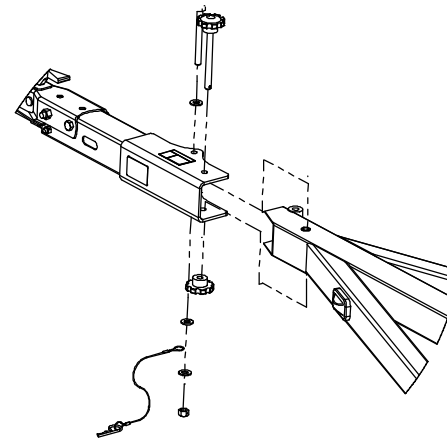
BUNK MOUNTING INSTRUCTIONS

VIEW 2



VIEW 4

SWING TONGUE MOUNTING INSTRUCTIONS



ALL DIMENSIONS ARE IN INCHES
UNLESS OTHERWISE STATED
TOLERANCES EXCEPT AS NOTED
DECIMALS:
.X ±0.100
.XX ±0.060
.XXX ±0.030
.XXXX ±0.010
ANGLES:
±1°
ALL FORMED ANGLES
EQUAL 90° UNLESS
NOTED OTHERWISE
() INDICATES REFERENCE

THE INFORMATION IN THIS DRAWING IS THE SOLE
PROPERTY OF KARAVAN TRAILERS, INC. ANY
REPRODUCTION IN PART OR WHOLE WITHOUT
THE WRITTEN PERMISSION OF KARAVAN TRAILERS,
INC. IS PROHIBITED.
APPROVED BY: ---
DRAWN BY: M. HALFMANN
DATE: 3/31/2000
SHEET: 7 OF 7
SCALE: N/A

KARAVAN
TRAILERS

TITLE: KCB-2200-74

MAT'L: SEE B.O.M.

FINISH: N/A

DWG. #: KCB-2200-74

L	15543	KMH	07-09-12	310-01903 REPLACED 310-02255
K	15342	MJH	02-14-12	210-00340 AND 210-00384 REPLACED 210-00268; UPDATED DIMENSIONS ON PAGES 5 AND 6.
DWG. REV.	ECR/NDP NUMBER	REVISED BY	DATE	DESCRIPTION