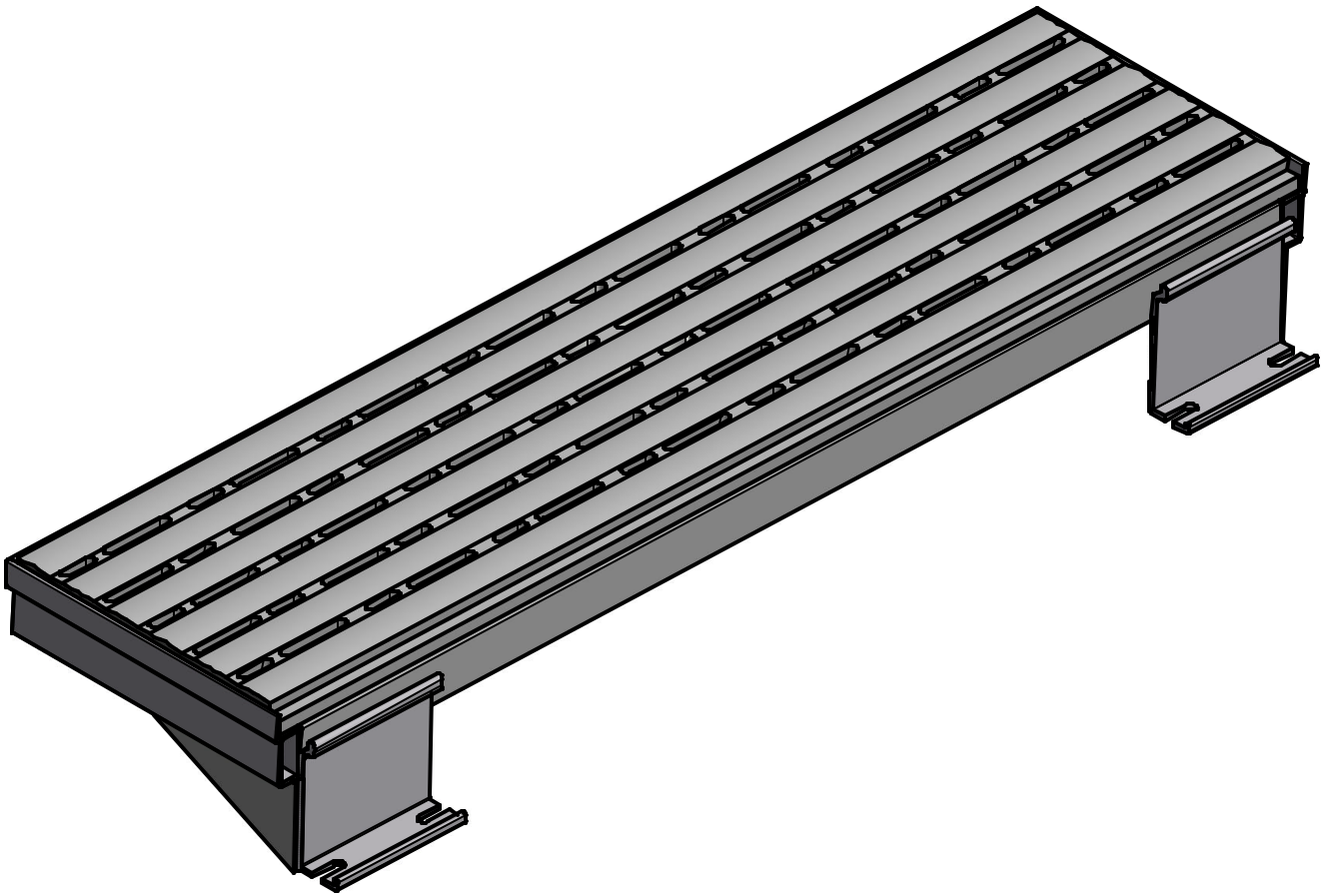


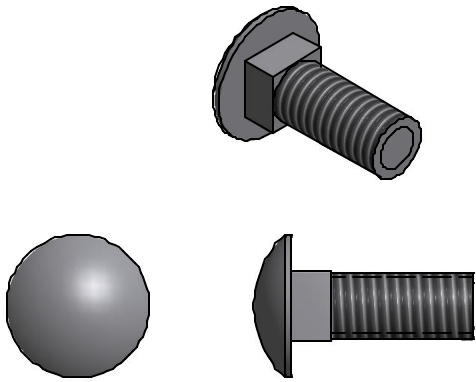


## Boatlift Step



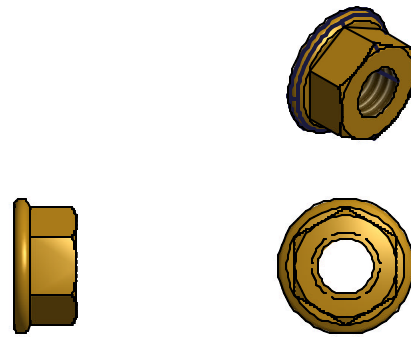
PARTS LIST			
ITEM	QTY	PART NUMBER	DESCRIPTION
1	1	VM-169-00	STEP
2	4	HD-00059	3/8 X 1" CARRIAGE (S/S)
3	4	HD-00056	3/8 FLANGE NUT (BRASS)

2



3/8 X 1 S.S. CARRIAGE BOLT (4 REQ'D)

3



3/8 FLANGE NUT BRASS (4 REQ'D)

**To insure your safety while assembling your Voyager product:**

- Fully read and understand the assembly instructions
- Do not assemble this product if items are missing or damaged
- Wear protective gloves, clothing and eye wear when assembling this product

**Installation procedure**

The following tool will be needed: 9/16" wrench

1. Insert head of carriage bolts into raceway on the underside of the rail and slide to desired location on dock. **Per diagram A.**
2. Slide one bolt to left and one to the right of boat lift step position and put 2 in center.  
**Per diagram A-1**
3. Attach boat lift step onto dock rail at desired location.
4. Slide carriage bolts into channels and attach flange nuts. **Per diagram B.**
5. Take 9/16 wrench and tighten flange nut.

DIAGRAM A

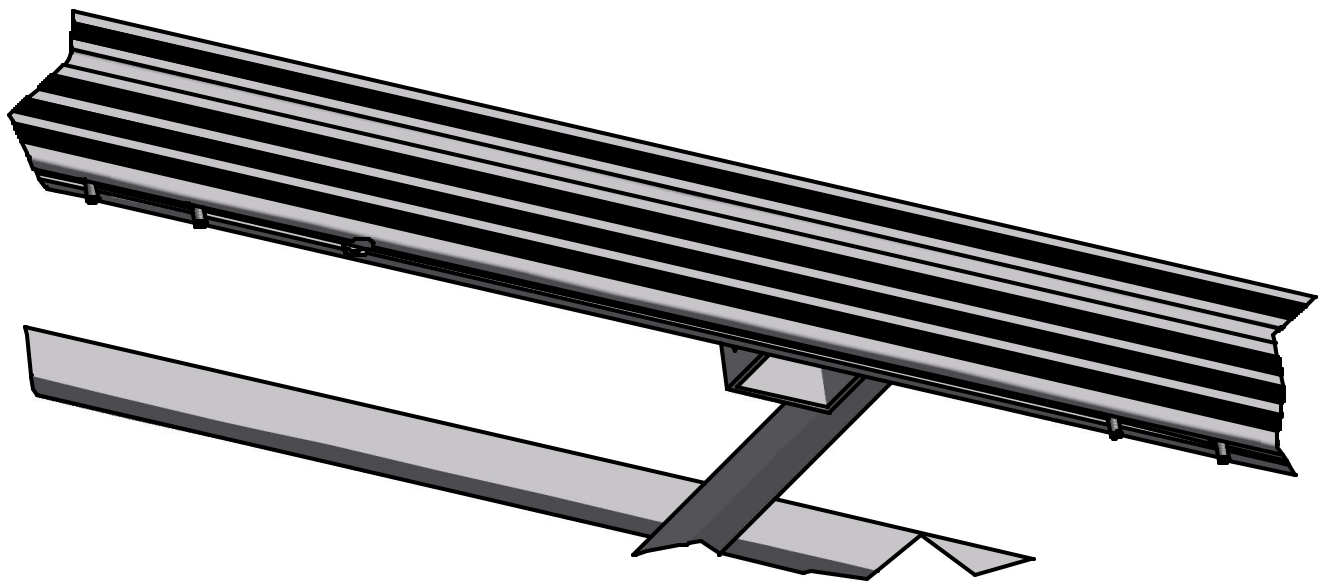
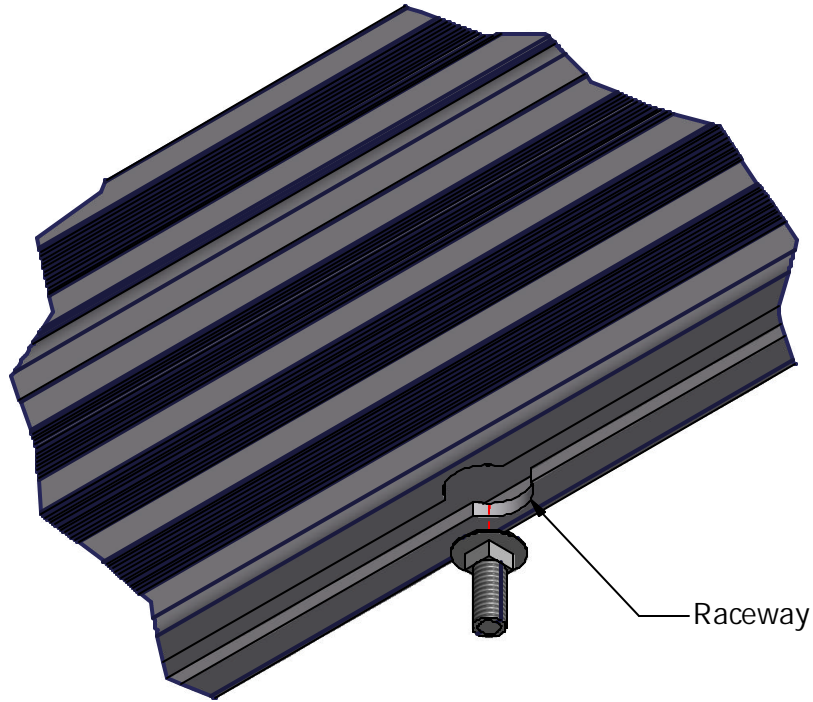


DIAGRAM A-1

DIAGRAM B

