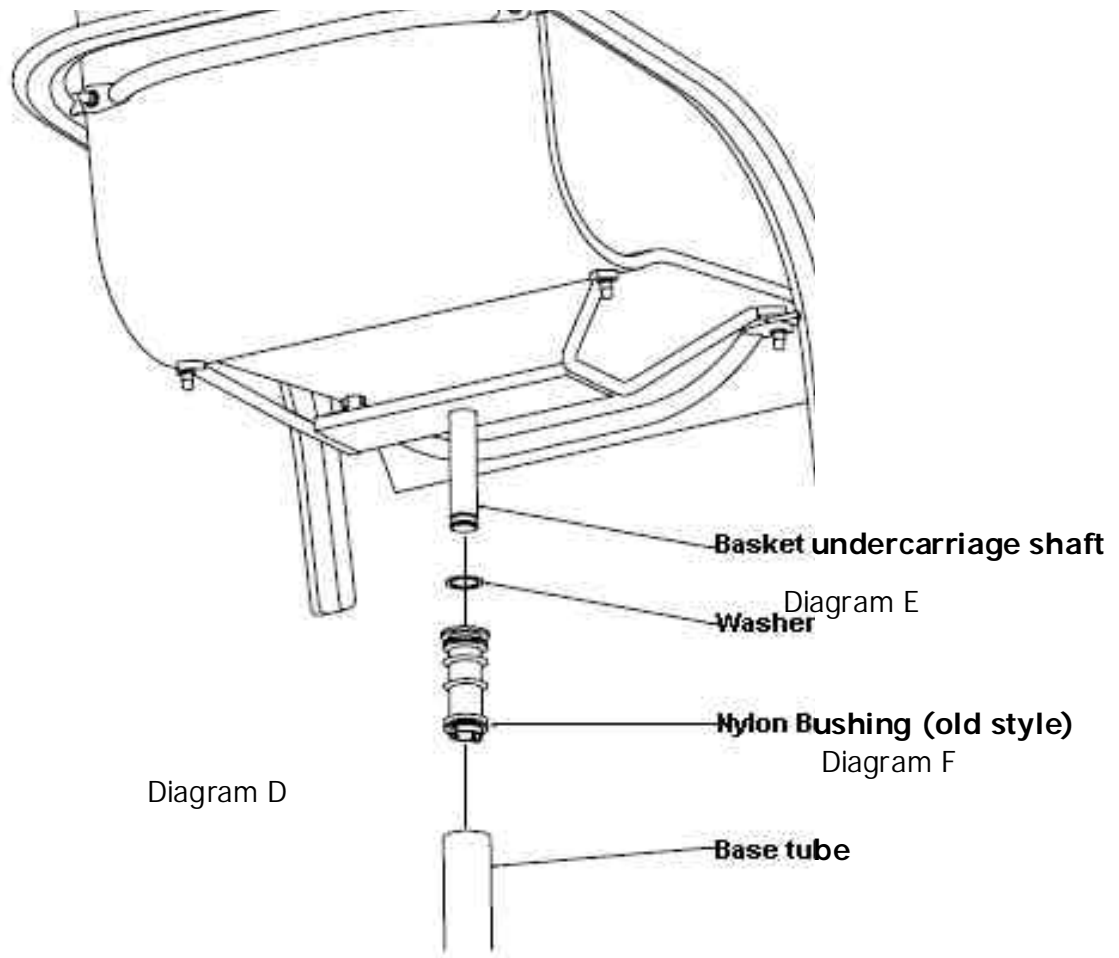
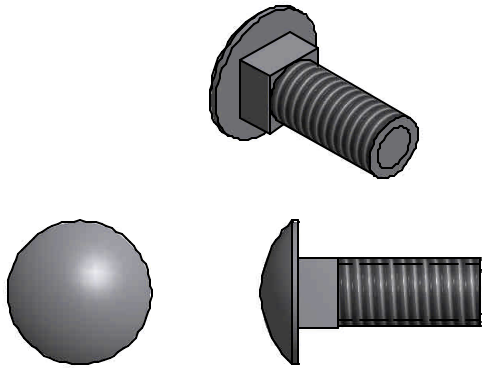




Homecrest Chair

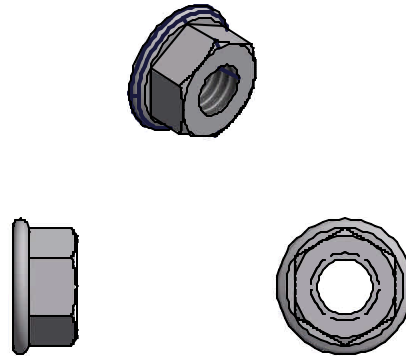


2



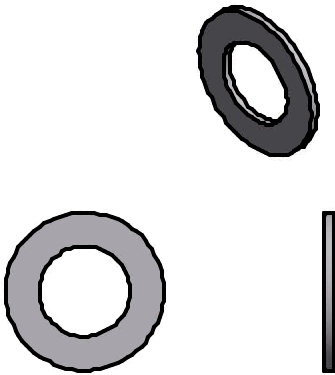
3/8 X 1 S.S. CARRIAGE BOLT (6 REQ'D)

3



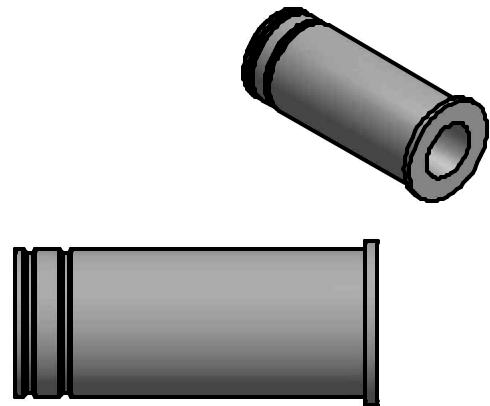
3/8 FLANGE NUT (6 REQ'D)

4



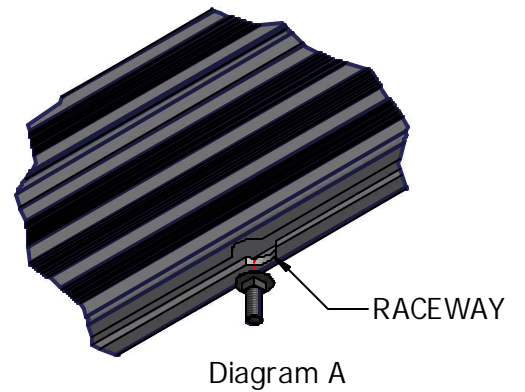
WASHER (1 REQ'D)

5



NYLON BUSHING NEW STYLE (1 REQ'D)

PARTS LIST			
ITEM	QTY	PART NUMBER	DESCRIPTION
1	1	VM-079	CHAIR UNDERCARRIAGE SHAFT
2	6	HD-00059	3-8 X 1 SS CAR
3	6	HD-00056	3/8 BRASS FLANGE NUT
4	1	WASHER	WASHER
5	1	VM-123-02	BUSHING



To insure your safety while assembling your Voyager product:

- Fully read and understand the assembly instructions
- Do not assemble this product if items are missing or damaged
- Wear protective gloves, clothing and eye wear when assembling this product
- Check tightness of all hardware each year to avoid injury.

Installation procedure

The following tools will be needed: 9/16" wrench, pliers

1. Insert head of carriage bolt into raceway on the underside of dock rail and slide to desired location on dock. **Per diagram A.**
2. Slide bracket into dock rail, put carriage bolts into bracket and attach flange nuts, finger tight at this time. **Per diagram B.**
3. Install carriage bolts into keyhole slots on chair mount bracket, slide into place and attach flange nuts. **Per diagram C.**
4. Take 9/16" wrench and tighten all 4 flange nuts. **Check tightness annually to ensure safety.**
5. You have 2 options for installing nylon bushing in the base tube.** It may be necessary to lightly tap bushing in with hammer, make sure to keep bushing as straight as possible while tapping in so not to damage . **Per diagram D.**
6. Slide the washer onto the basket undercarriage shaft. **Per diagram E.**
7. Place basket undercarriage shaft into nylon bushing. **Per diagram F.**
8. Press basket undercarriage into the base tube until it clicks.

****OPTION 1)If you wish to easily remove your Homecrest chair from base use following procedure: A)remove tabs on bushing prior to installation into base B)take pliers and bend each of the 2 tabs back and forth until they snap off. C) Place bushing into base mount with tab end down. D) Proceed with step 5.**

OPTION 2) For permanent mount of basket carriage use, proceed with step 5

