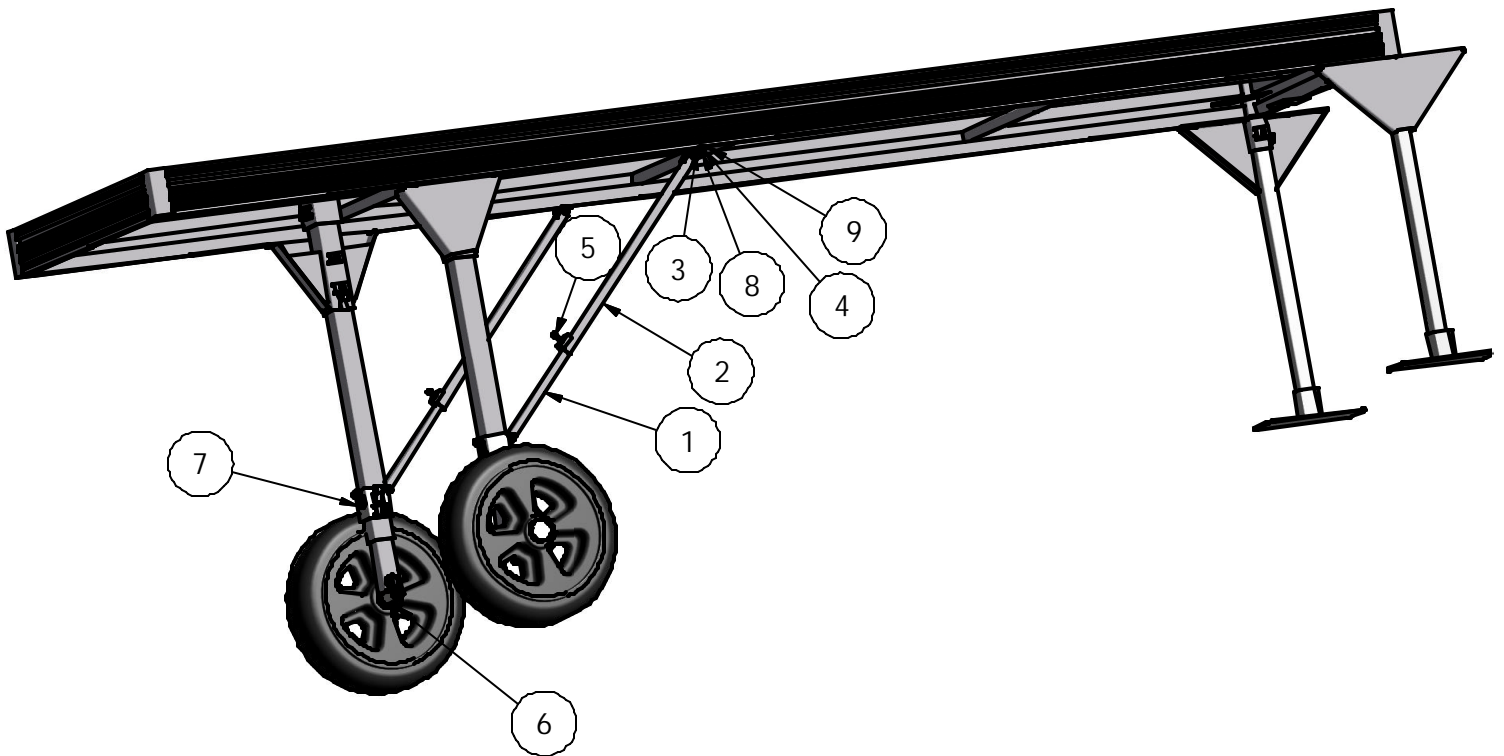


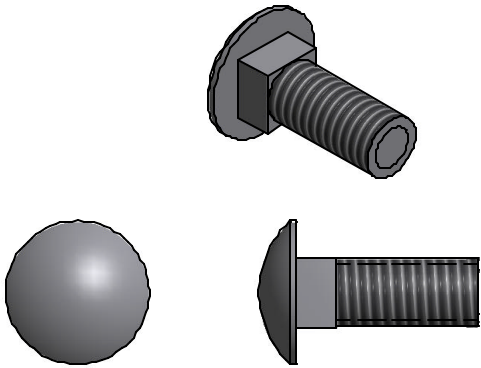


Roll in Deep Water Brace Straight



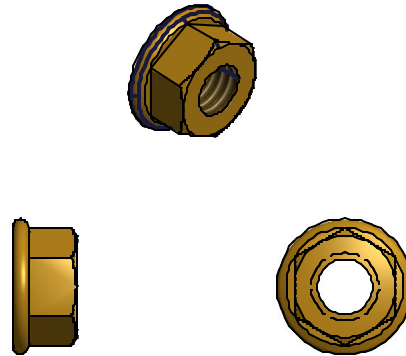
PARTS LIST			
ITEM	QTY	PART NUMBER	DESCRIPTION
1	2	VM-096-01 A	LOWER LEG BRACE
2	2	VM-096-02 A	UPPER LEG BRACE
3	4	HD-00117	3/8-18 X 2.5" HCS BOLT S/S
4	6	HD-00056	3/8 BRASS FLANGE NUT
5	4	HD-00060	1/2-13 X 1.25 SQ HEAD (S/S)
6	4	HD-00058	1/2" SQ NUT BRASS
7	2	VM-096-09	BRACE BRKT
8	2	HD-00044	3/8 X 1" CARRIAGE S/S
9	2	VM-096-5	MACHINED HINGE

8



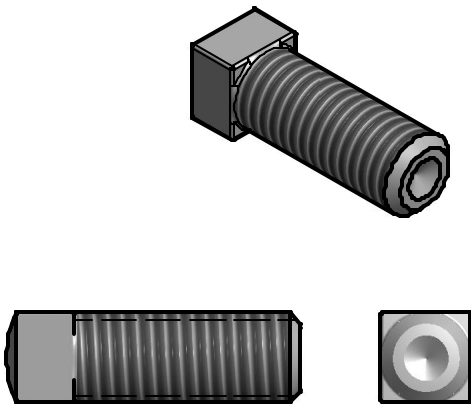
3/8 X 1 CARRIAGE BOLT SS (2 REQ'D)

4



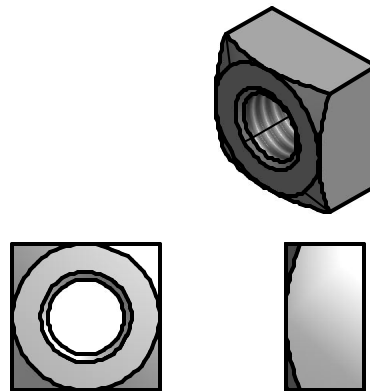
3/8 FLANGE NUT BRASS (6 REQ'D)

5



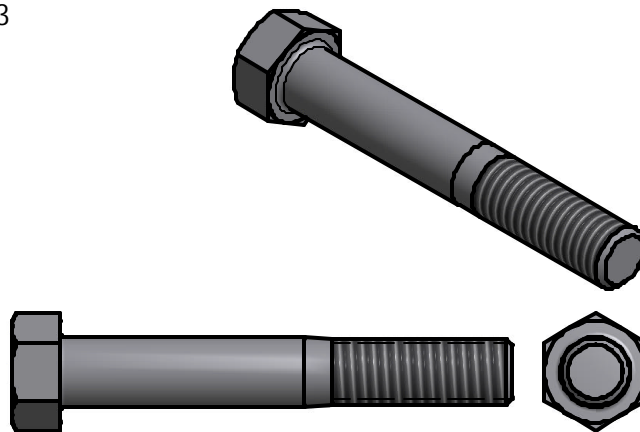
1/2-13 X 1.25 SQ BOLT SS (4 REQ'D)

6



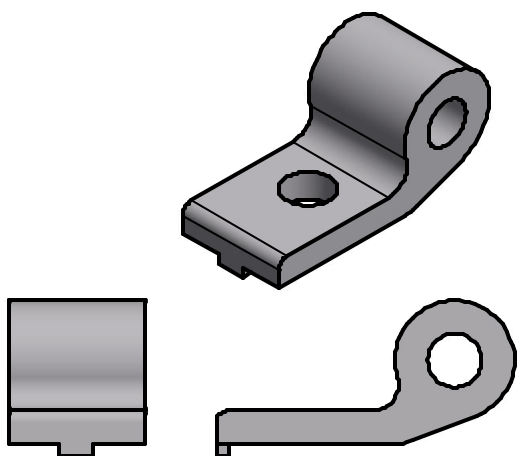
1/2 SQ NUT BRASS (4 REQ'D)

3



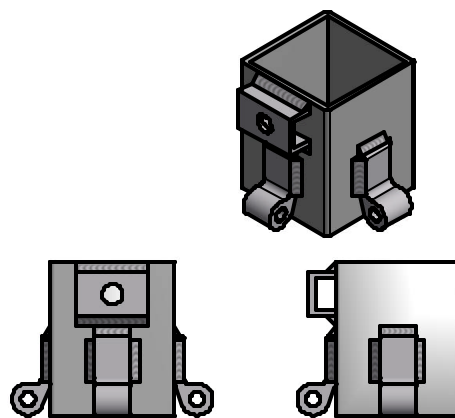
3/8 -16 X 2.5" BOLT SS (4 REQ'D)

9



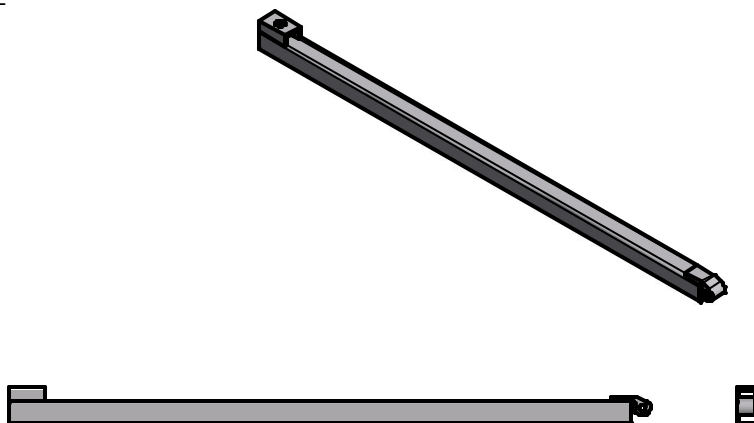
MACHINED HINGE (2 REQ'D)

7



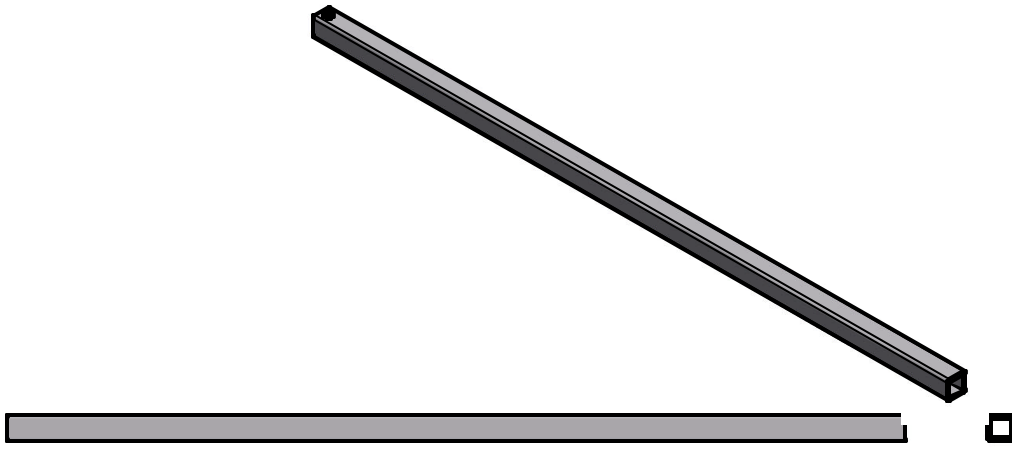
Brace BRKT (2 REQ'D)

2



UPPER BRACE (2 REQ'D)

1



LOWER BRACE (2 REQ'D)

To insure your safety while assembling your Voyager product:

- Fully read and understand the assembly instructions
- Do not assemble this product if items are missing or damaged
- Wear protective gloves, clothing and eye wear when assembling this product
- Check tightness of all hardware each year to avoid injury

Installation procedure

The following tools will be needed: (2) 9/16" wrenches, (1) 1/2" wrench

1. Raise wheel end of dock so wheel is off the ground.
2. Loosen up set bolt on bottom of screw leg with 1/2" wrench and remove stub axle and wheel. **Per diagram A-1.**
3. Put square nut into channel on brace bracket and start set bolt. Leave loose at this time. **Per diagram A-2.**
4. Slide brace bracket onto screw leg with set bolt facing towards inside of dock. Finger tighten set bolt enough to keep bracket in place. **Per diagram A-3.**
5. Reinstall stub axle and wheel at this time. Install axle leaving enough clearance so wheel will turn and tighten set bolt on bottom of screw leg. **Per diagram A-4.**
6. Repeat steps 1 -5 for other side.
7. Insert head of carriage bolt into raceway on the underside of the dock rail and slide toward screw leg. **Per diagram A.**
8. Attach machined hinge to carriage bolt with flange nut, leave loose at this time. **Per diagram B.**
9. Slide upper brace into lower brace, put 1/2" square nut into channel on brace (**see diagram C**) with the flat side of nut towards bolt head. Start bolt into nut and into tube slightly to hold nut in place, do not tighten at this time.
10. Hook end of brace with hinge welded on, to machined hinge. **Per diagram D.**
11. Hook drilled end of brace to brace bracket on screw leg. **Per diagram E.**
12. Using 9/16" wrenches to tighten bolt on brace bracket to brace and bolt to machined hinge.
13. Take 1/2" wrench and tighten set bolt on brace per diagram.
14. Repeat steps 7-13 for 2nd brace.

DIAGRAM A-1

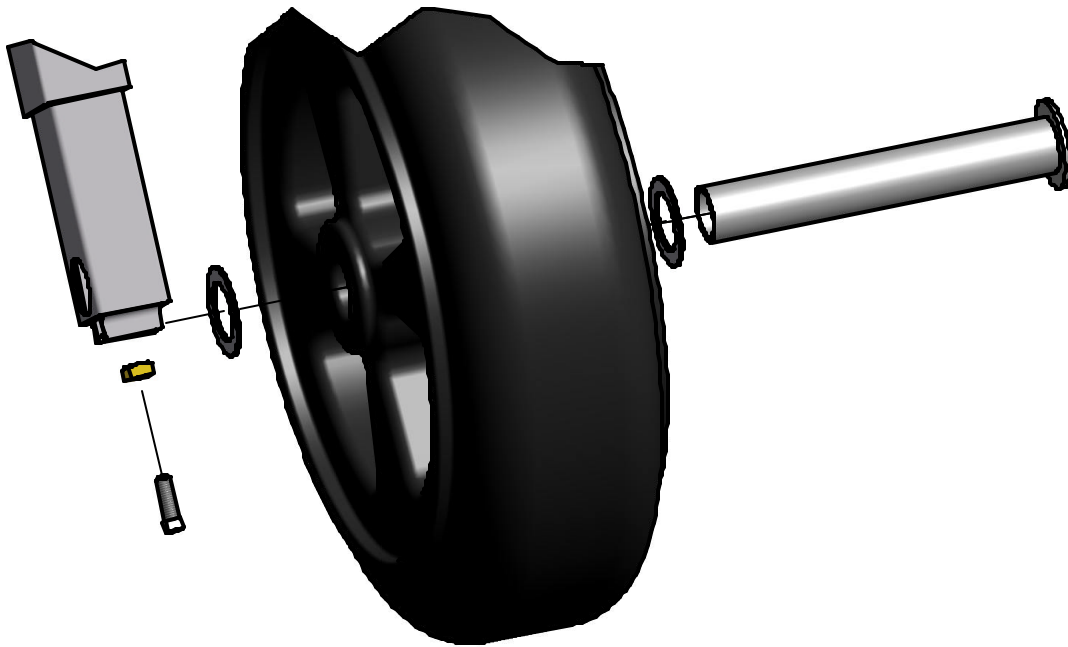


DIAGRAM A-2

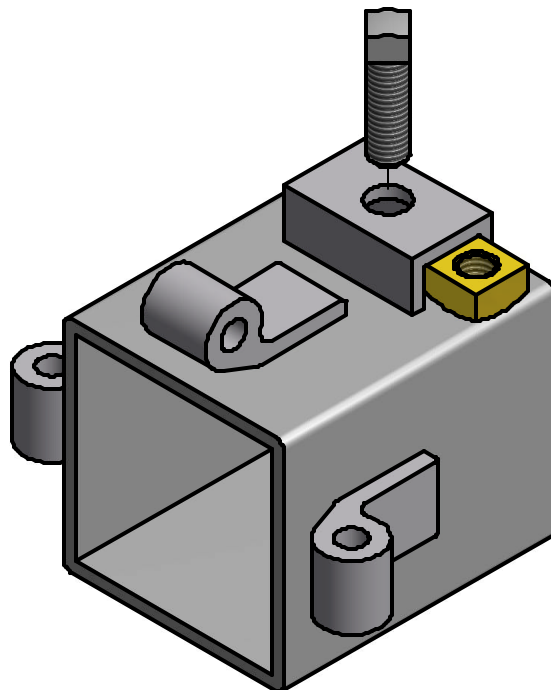


DIAGRAM A-3

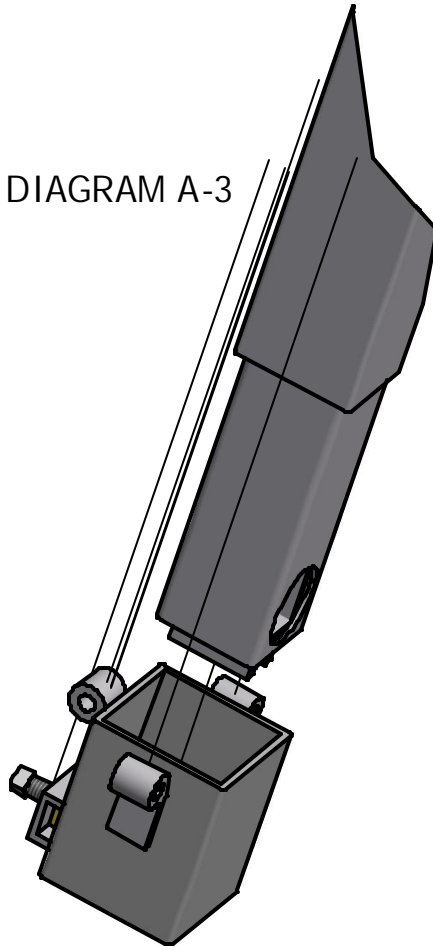


DIAGRAM A-4

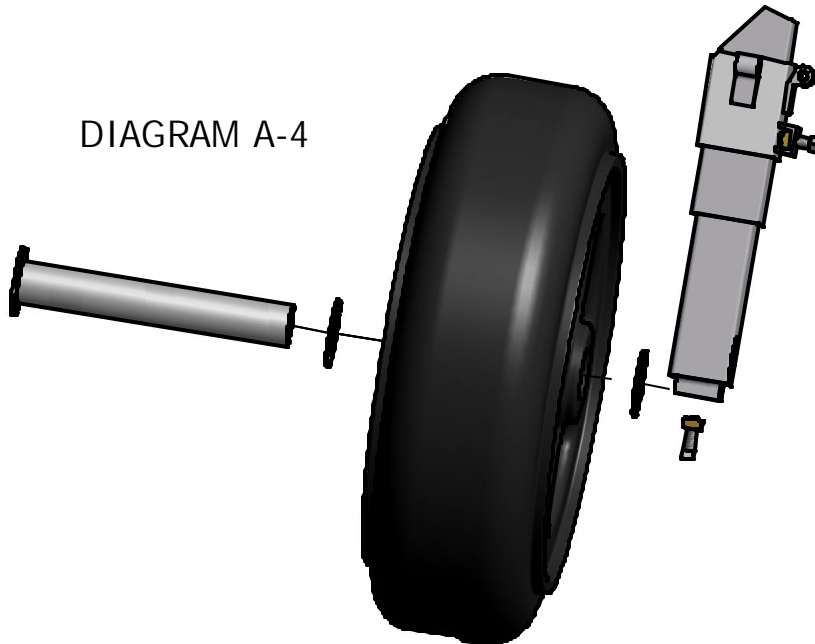


Diagram A

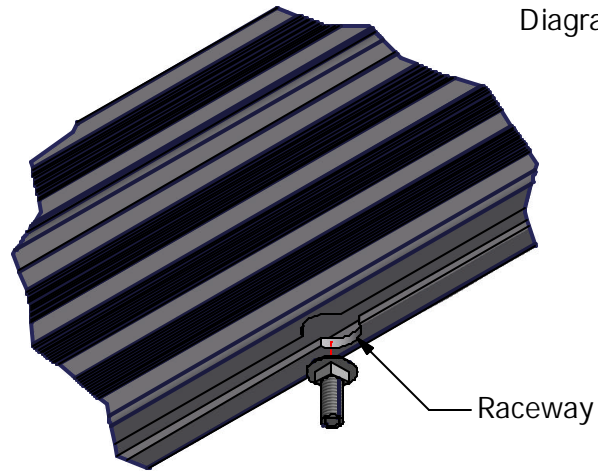
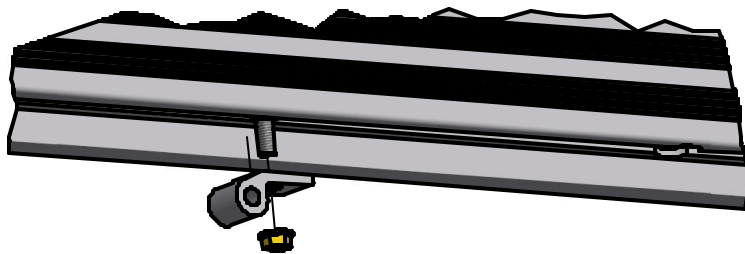


Diagram B



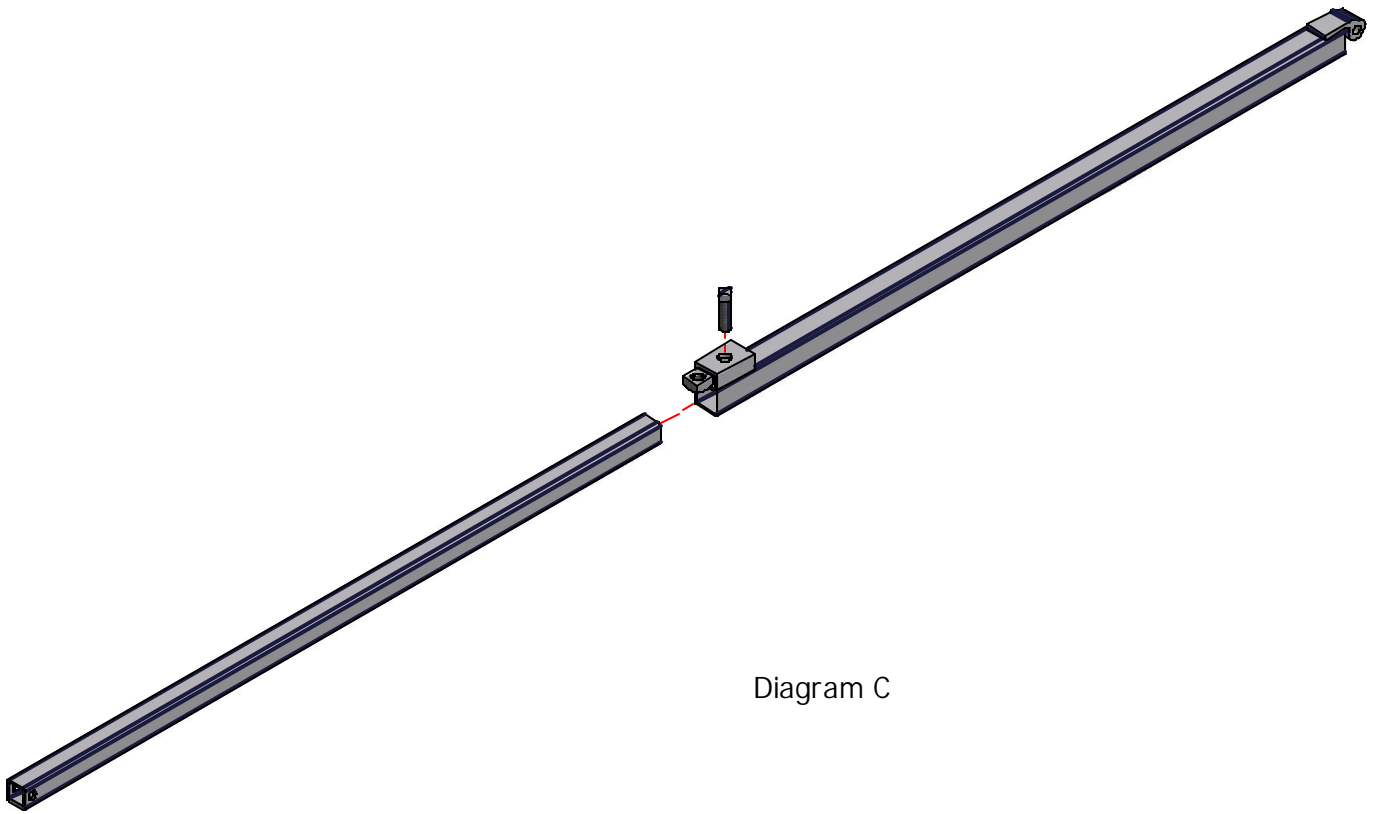


Diagram C

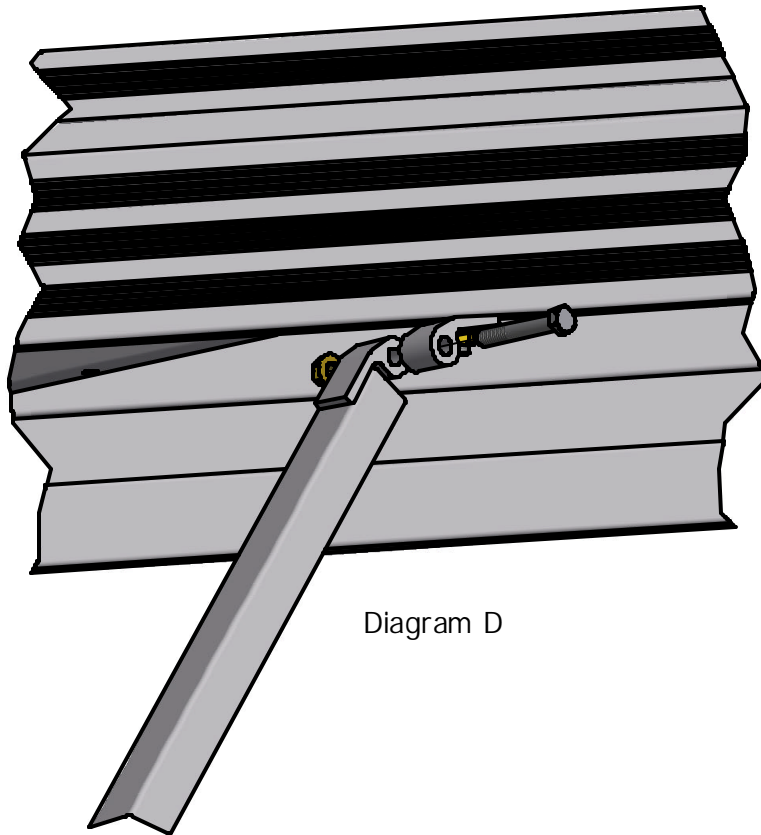


Diagram D

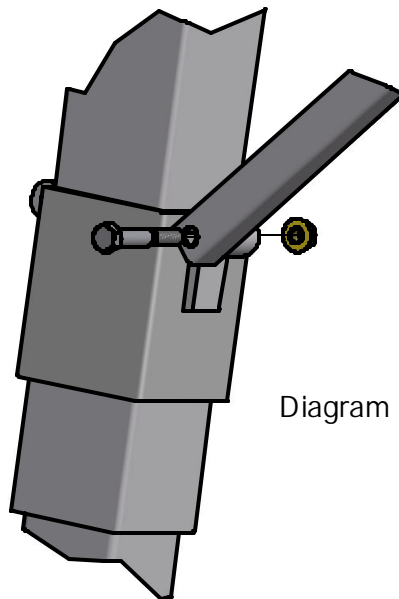


Diagram E