

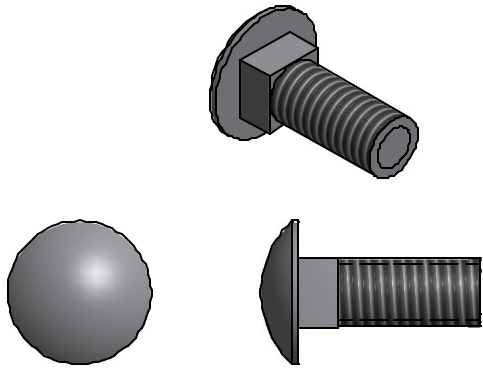


Shore End Wheel Kit



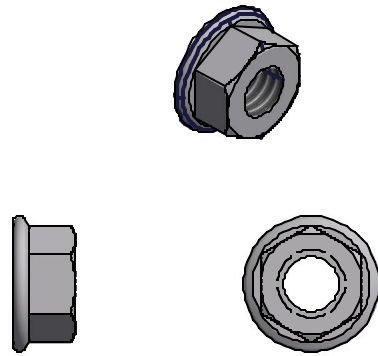
SHOWING 4' WIDE DOCK

5



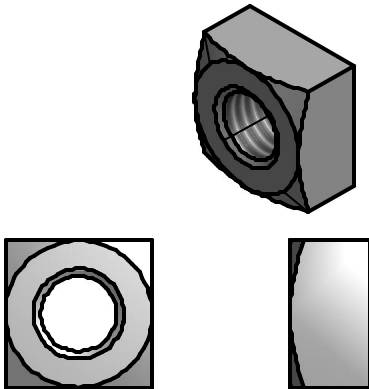
3/8 X 1 CARRIAGE BOLT S/S (4 REQ'D)

6



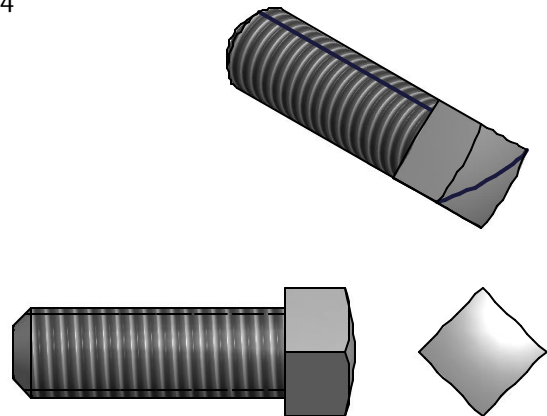
3/8 FLANGE NUT BRASS (4 REQ'D)

8



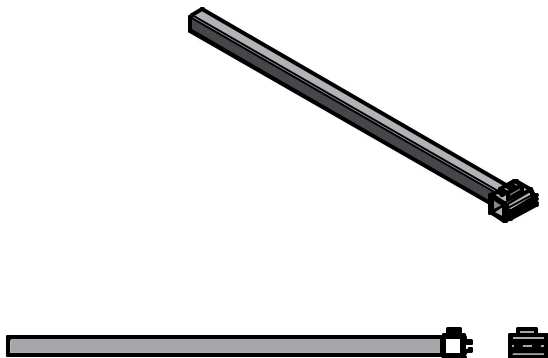
1/2 SQ. NUT BRASS (10 REQ'D)

4



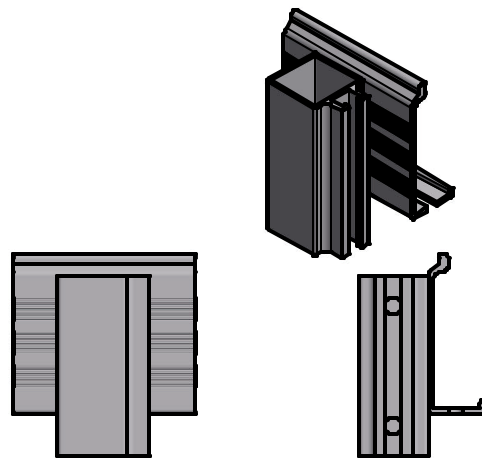
1/2 X 1 1/4 SQ. HEAD BOLT (10 REQ'D)

1



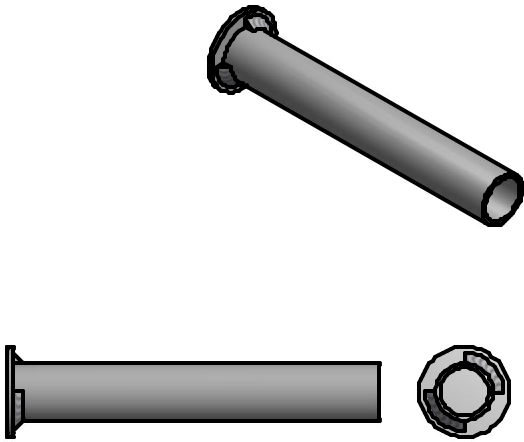
SHORE END LEG (2 REQ'D)

2



LEG BRACKET (2 REQ'D)

9

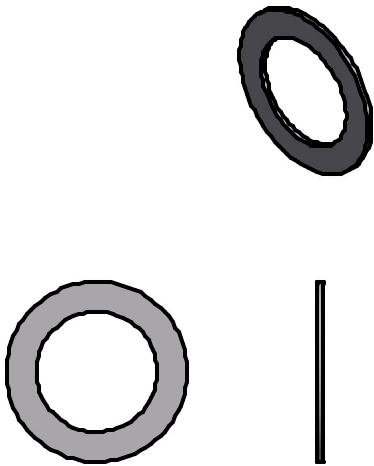


SINGLE AXLE TUBE(2 REQ'D)



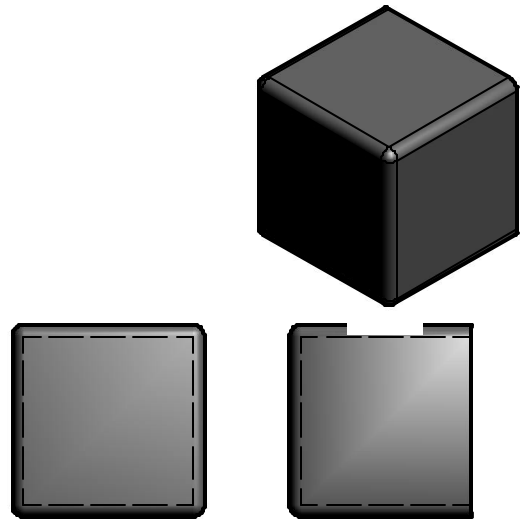
TIRES (2 REQ'D)

7

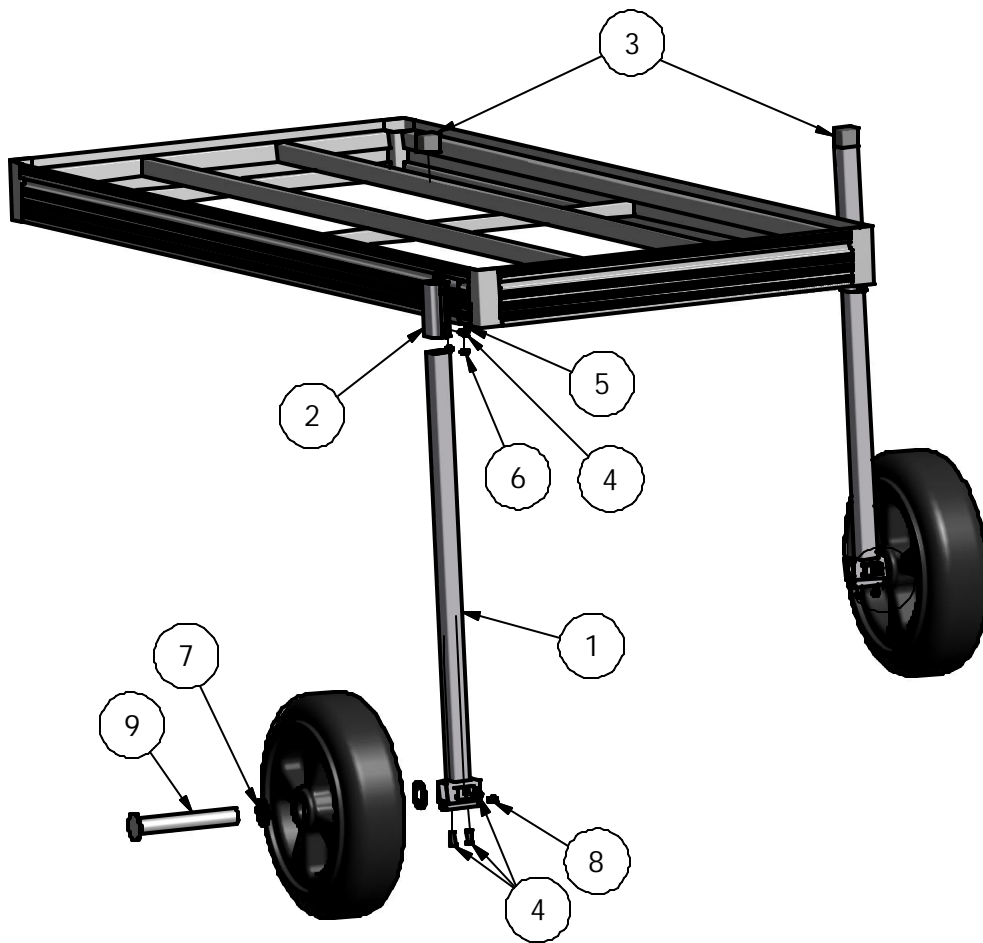


3 INCH AXLE WASHER S/S (4 REQ'D)

3



2 X 2 LEG CAP(2 REQ'D)



PARTS INCLUDED IN VM--031

| PARTS LIST | | | |
|------------|-----|-------------|-------------------------------|
| ITEM | QTY | PART NUMBER | DESCRIPTION |
| 1 | 2 | VM-017 A | SHORE END AXLE LEG XMNT |
| 2 | 2 | VM-016 | START BRKT SCKET |
| 3 | 2 | HD-00081 | 2" X 2" LEG CAP |
| 4 | 10 | HD-00060 | 1/2-13 X 1 1/4" SQ BOLT (S/S) |
| 5 | 4 | HD-00059 | 3/8 X 1" CARR BOLT (S/S) |
| 6 | 4 | HD-00056 | 3/8 FLANGE NUT (BRASS) |
| 7 | 4 | HD 00053 | 3 INCH AXLE WASHER |
| 8 | 10 | HD-00058 | 1/2-13 ROUNDED SQ NUT (BRASS) |
| 9 | 2 | VM-164 | SINGLE AXLE TUBE |

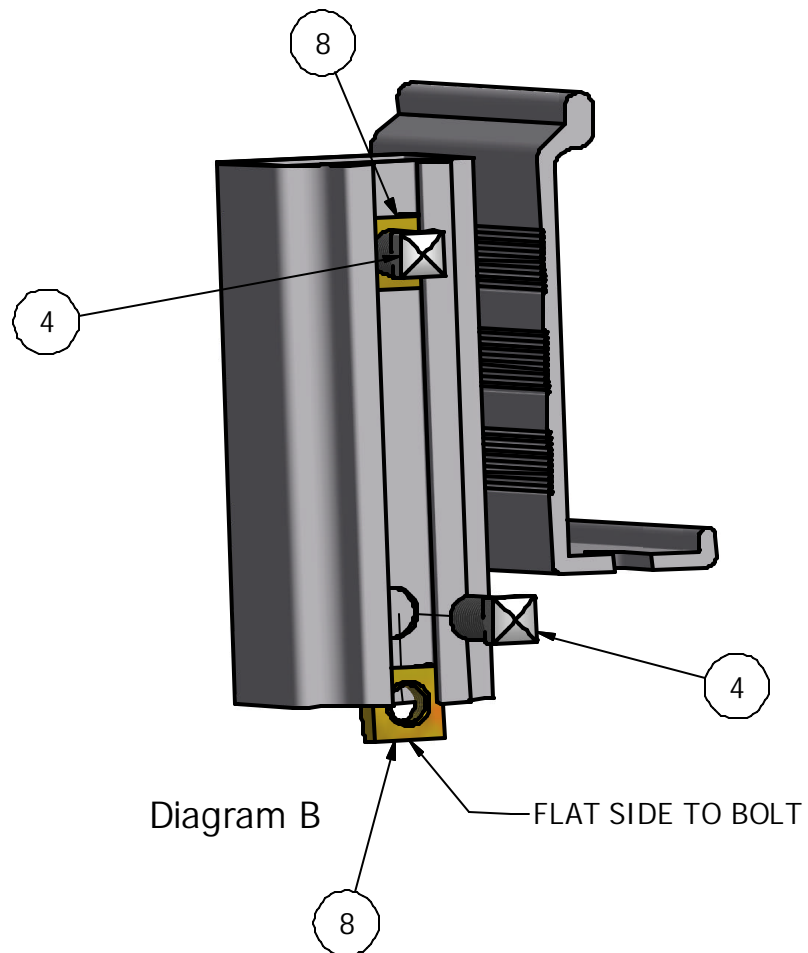
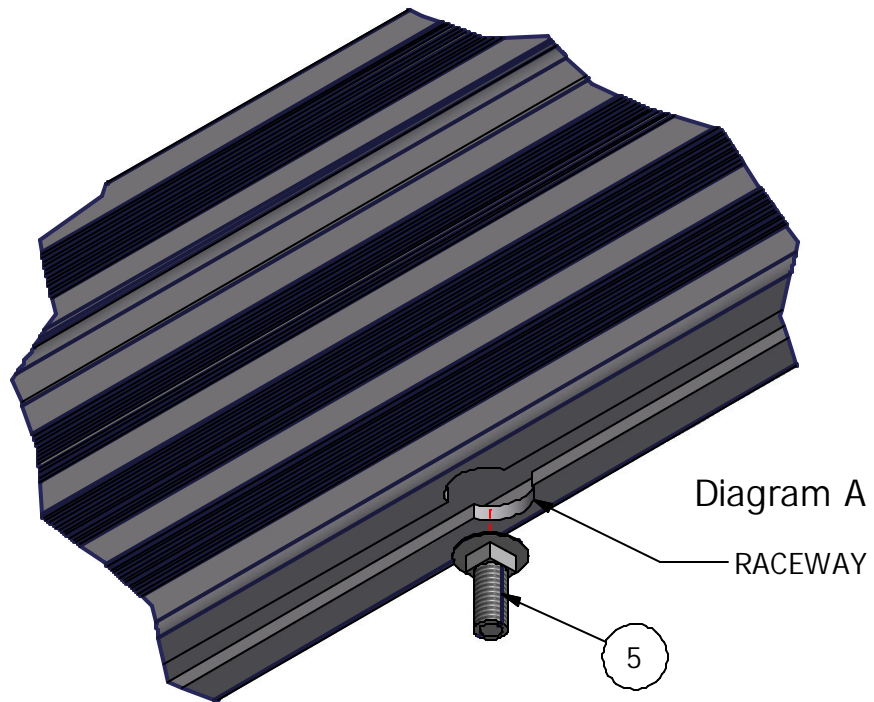
To insure your safety while assembling your Voyager product:

- Fully read and understand the assembly instructions
- Do not assemble this product if items are missing or damaged
- Wear protective gloves, clothing and eye wear when assembling this product
- Check tightness of all hardware each year to avoid injury

Installation procedure for wheel kit

The following tools will be needed: (2) 1/2" wrenches, 9/16" wrench, and tape measure

1. For ease of installation block end of dock up off the ground 3'.
2. Insert head of 2 carriage bolts into raceway on the underside of dock rail and slide to desired location on dock. **Per diagram A.**
3. Put square nuts into bracket. Start bolts in nut to keep in place. **Per diagram B.**
4. Slide axle leg into dock bracket. Finger tighten set screw to hold leg into place. **Per diagram C.**
5. Slide bracket into dock rail to desired location, put carriage bolts into bracket and attach flange nuts. **Per diagram D.**
6. Take 9/16" wrench and tighten flange nuts.
7. Put leg to desired height using tape measure and tighten set bolts with 1/2" wrench.
8. Repeat steps 1-7 for second bracket. Putting same distance in from end of dock as the first bracket.
9. Put 3" washer onto stub axle, slide poly tire on, put another 3" washer on, install stub axle and tire into leg with tire to outside of dock until washer is close to leg (leave clearance so tire isn't tight). **Per diagram E.**
10. Put square nuts into leg bracket, thread 1/2" set bolts into nuts and tighten with 1/2" wrench.
11. Repeat step 10 for other side.
12. Set dock down onto wheels and check height.
13. Install cap onto top of leg bracket.



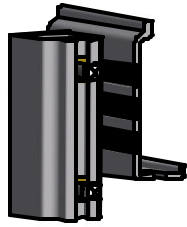


Diagram C

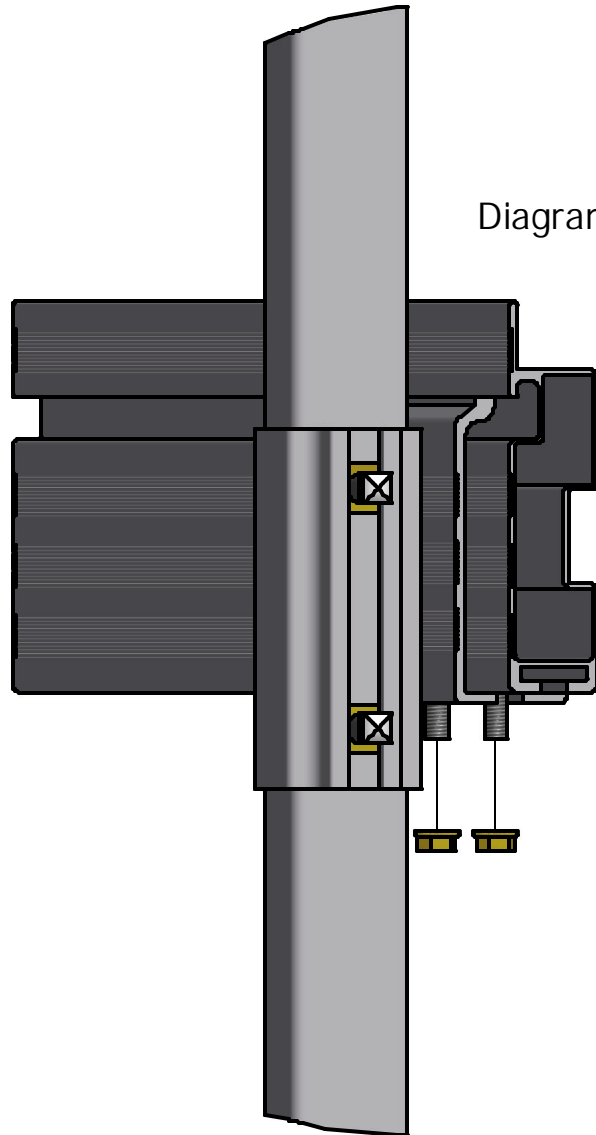
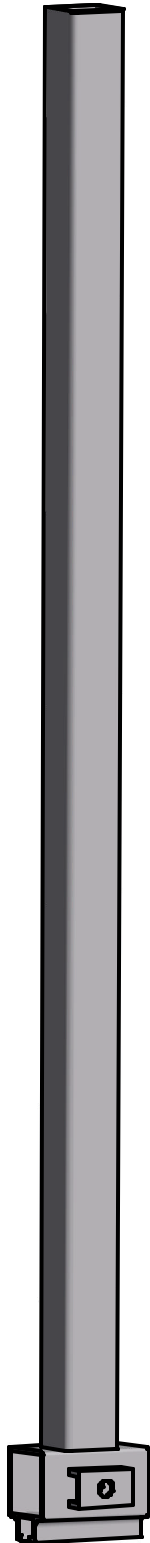


Diagram D

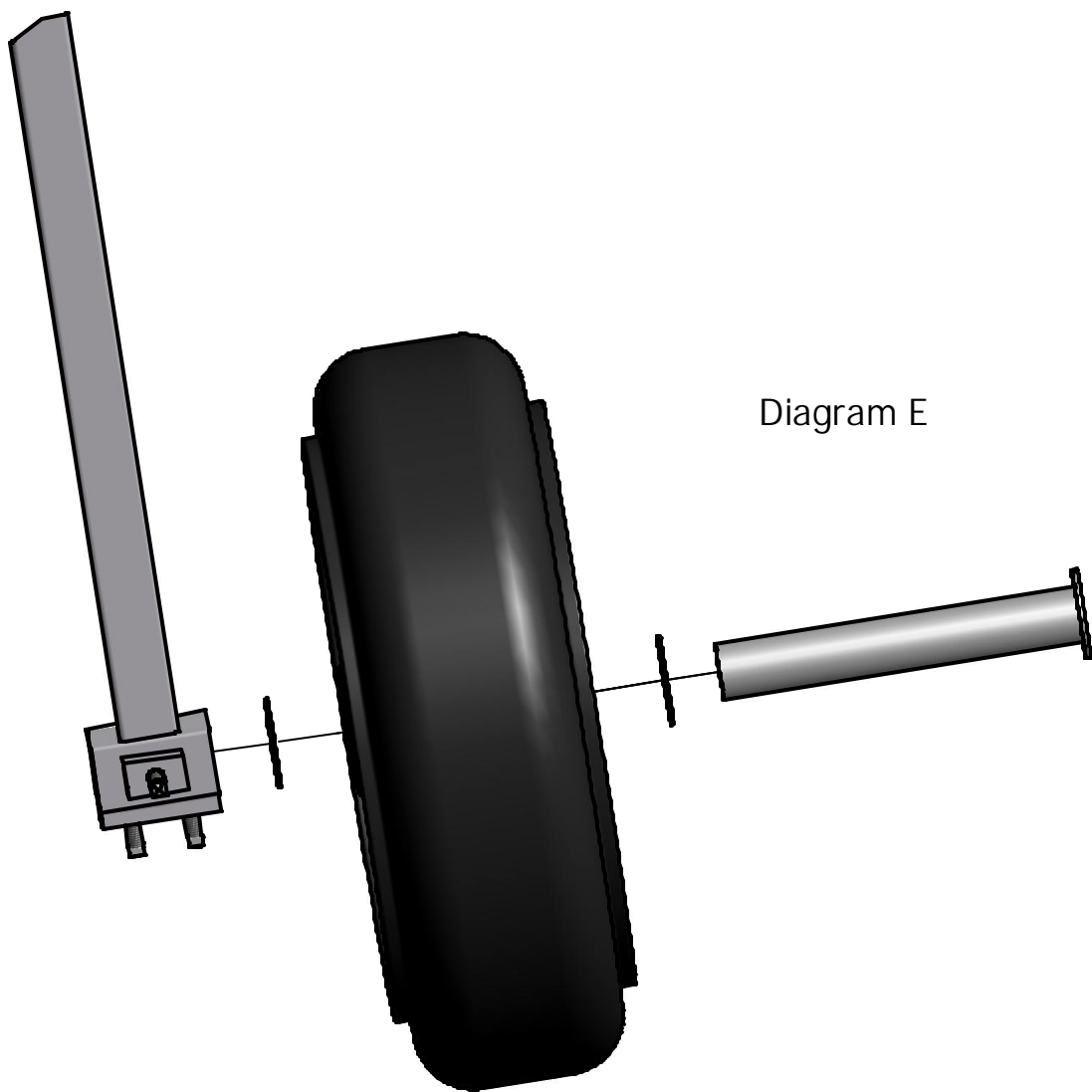


Diagram E