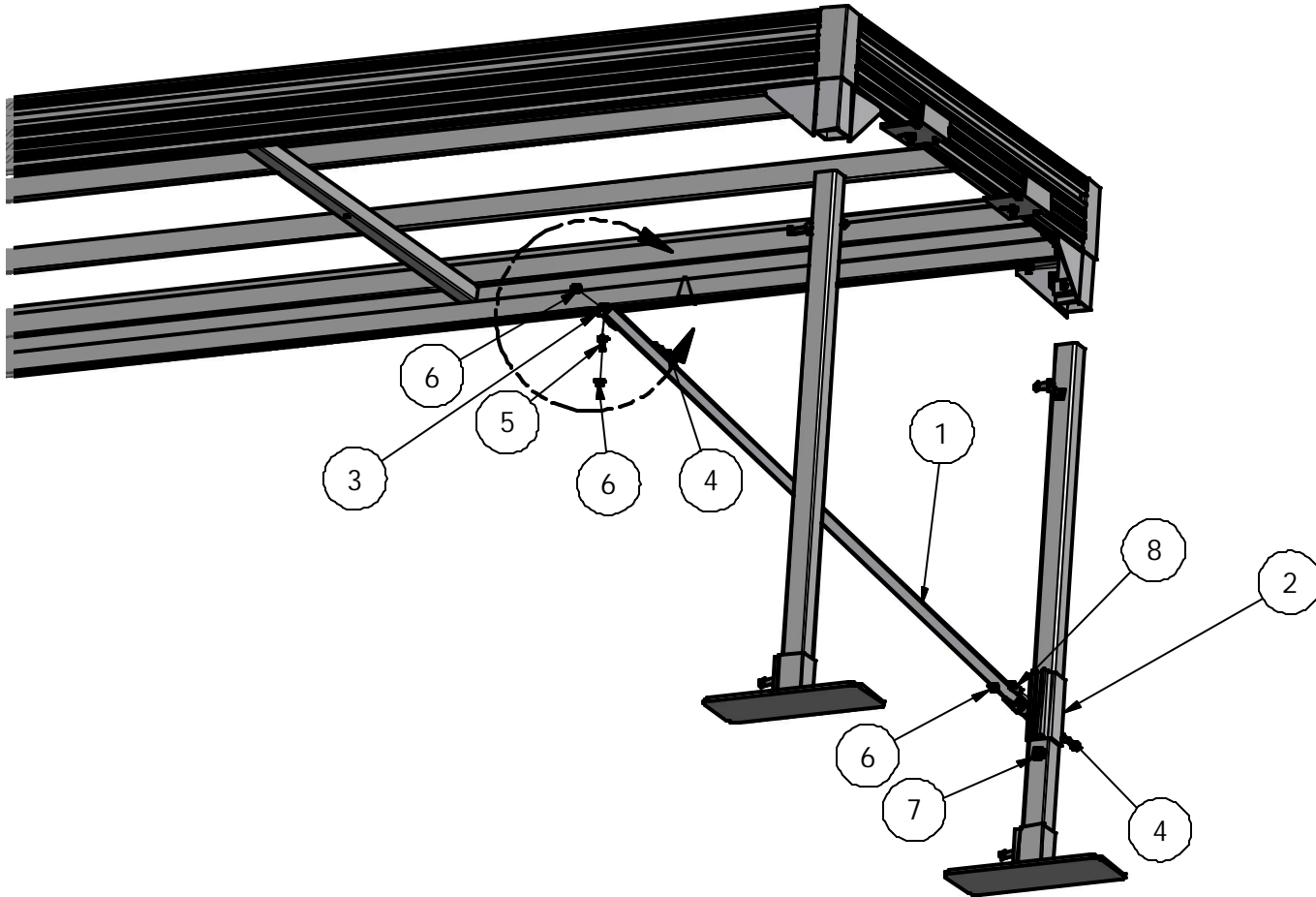
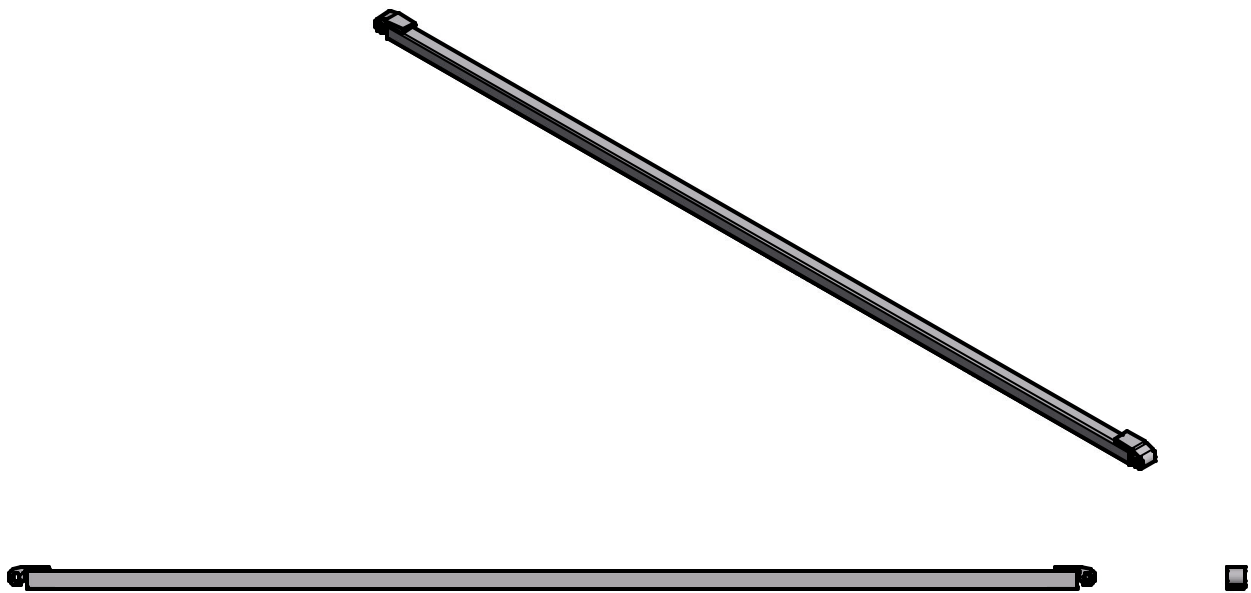




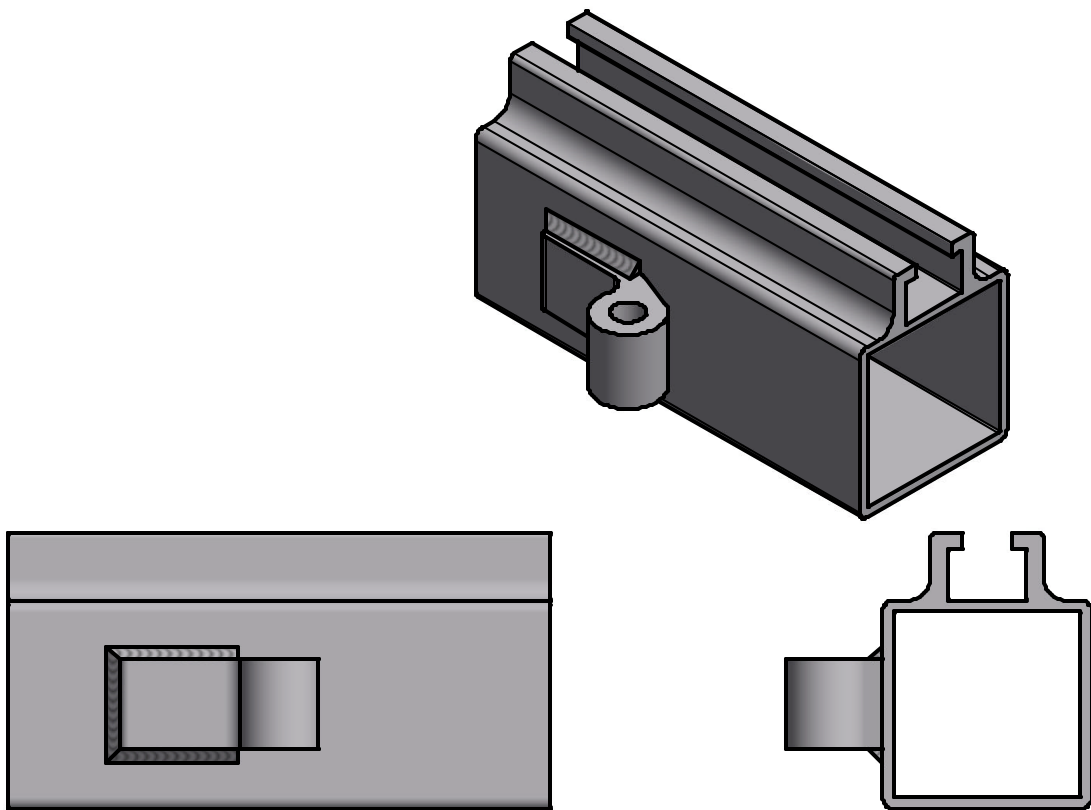
Standing Dock Deep Water



PARTS LIST			
ITEM	QTY	PART NUMBER	DESCRIPTION
1	2	VM-094-01	BRACE
2	2	VM-094-2	LEG BRACKET
3	2	VM-096-5	MACHINED HINGE
4	4	HD-00117	3/8-18 X 2.5 HCS BOLT (S/S)
5	2	HD-00059	3/8 X 1 SS CAR
6	6	HD-00056	3/8 BRASS FLANGE NUT
7	2	HD-00058	ROUND NUT SQ 1/2-13 BRASS
8	2	HD-00060	1/2-13 X 1 1/4 SQ SS BOLT

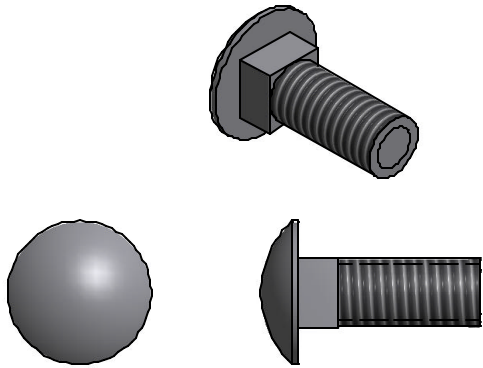


BRACE (2 REQ'D)



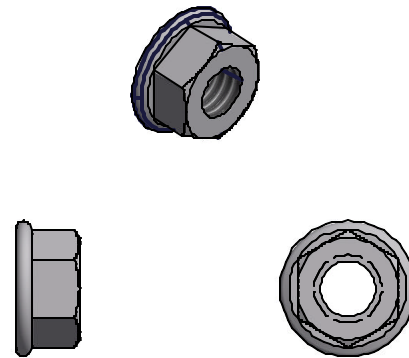
LEG BRACKET (2 REQ'D)

5



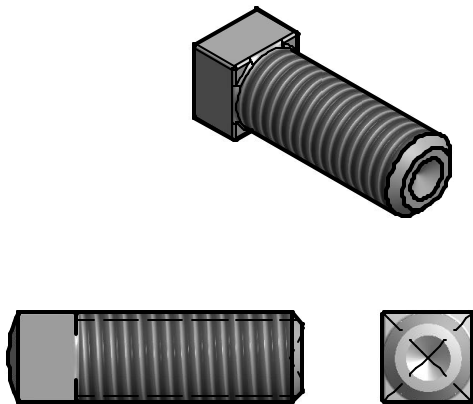
3/8 X 1 CARRIAGE BOLT SS (2 REQ'D)

6



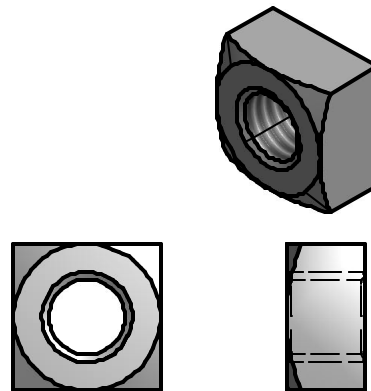
3/8 FLANGE NUT BRASS (6 REQ'D)

8



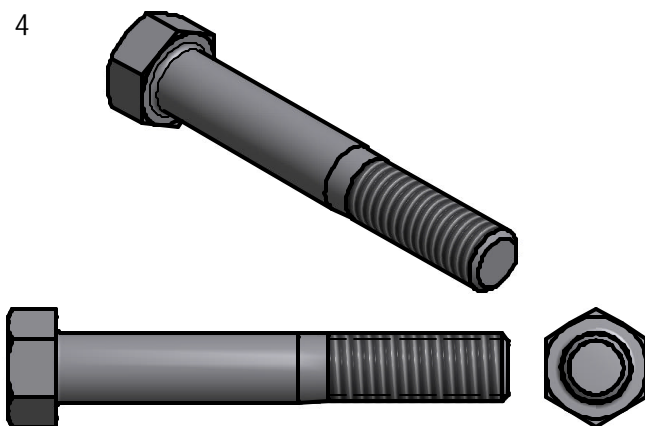
1/2-13 X 1.25 SQ BOLT SS (2 REQ'D)

7



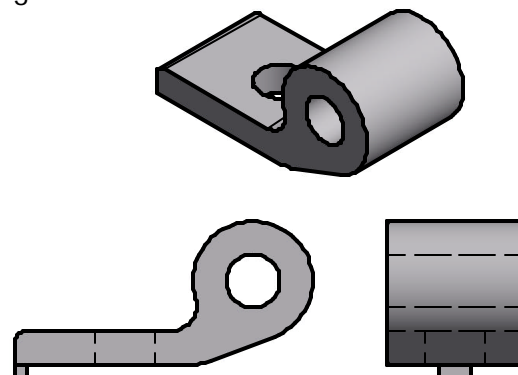
1/2 SQ NUT BRASS (2 REQ'D)

4



3/8 - 18 X 2.5 BOLT SS (4 REQ'D)

3



MACHINED HINGE (2 REQ'D)

To insure your safety while assembling your Voyager product:

- Fully read and understand the assembly instructions
- Do not assemble this product if items are missing or damaged
- Wear protective gloves, clothing and eye wear when assembling this product
- Check tightness of all hardware each year to avoid injury

Installation procedure

The following tools will be needed: (2) 9/16" wrenches, (1) 1/2" wrench

1. Insert head of carriage bolts into raceway on the underside of the rail and slide towards leg post on dock. **Per diagram A.**
2. Attach machined hinge with carriage bolt and flange nut to dock, leave loose at this time. **Per diagram B.**
3. Slide leg bracket onto dock leg (face side for set bolt to inside of dock). **Per diagram C.**
4. Start set bolt into square nut, flat edge of nut to head of bolt. Slide into leg bracket, turn set bolt in enough to catch hole in bracket to keep in place (don't tighten at this time). **Per diagram D.**
5. Put bolt in brace to upper hinge. **Per diagram E.**
6. Put bolt in brace to leg bracket. **Per diagram F.**
7. Slide brace up or down so ends of brace are evenly spaced away from dock leg. **Per diagram G.**
8. Tighten set bolt on leg bracket with 1/2" wrench.
9. Tighten brace bolts and top carriage bolts with 9/16" wrenches.
10. Repeat steps 1-9 for second brace.
11. Take 9/16" wrench and tighten flange nut.

