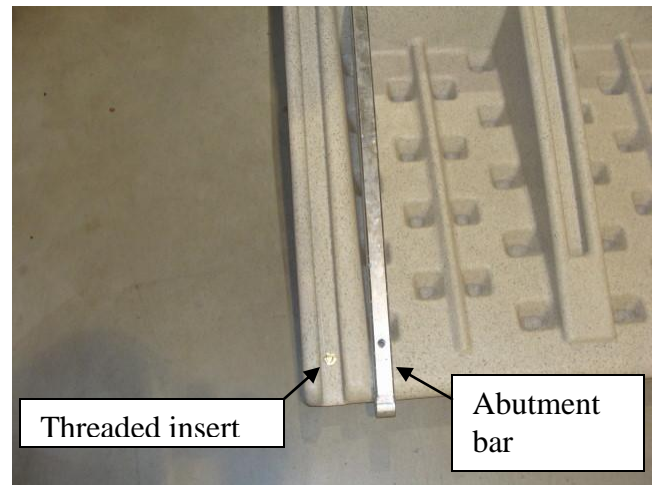
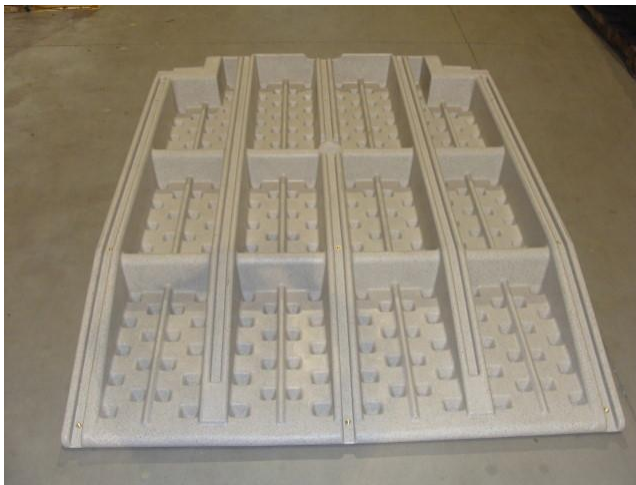




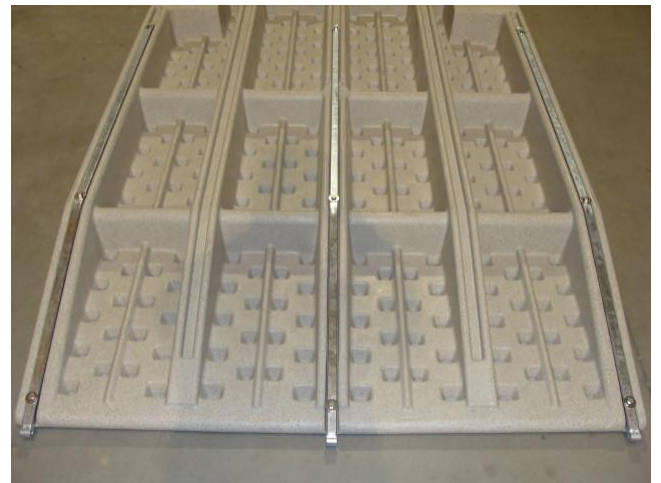
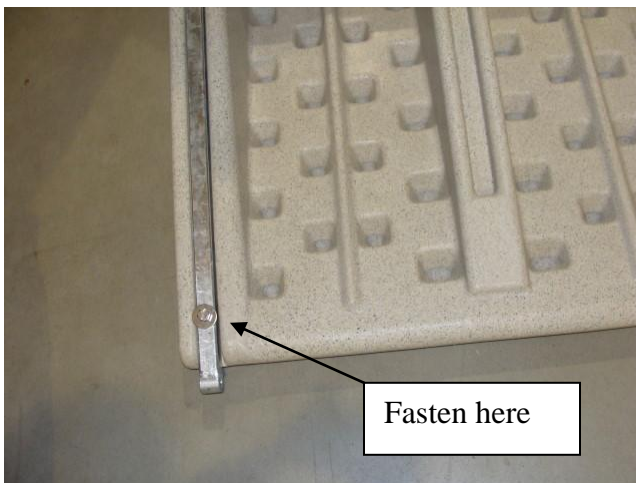
21933 Attaching Dock Ramp to a Sea Wall

Install the abutment bars before attaching the ramp to the dock.

1. Turn the dock ramp over so the bottom is facing up. Line up the three holes in the abutment bars with the brass threaded inserts in the bottom of the ramp.



2. Loosely thread the 3/8 x 1 1/2 bolts with washers into the inserts. Do not tighten the bolts down until all nine of them are threaded into the holes. When all of the bolts are in the holes they may be securely tightened. The dock ramp may be turned over at this point.



3. Normally the anchoring bracket will be fastened to the sea wall before attaching it to the dock ramp. Line up the abutment bar ends with the hinge points in the anchoring bracket. Tap the 7/16 x 3 ½ bolts through the holes and tighten down with the nylock nuts.

