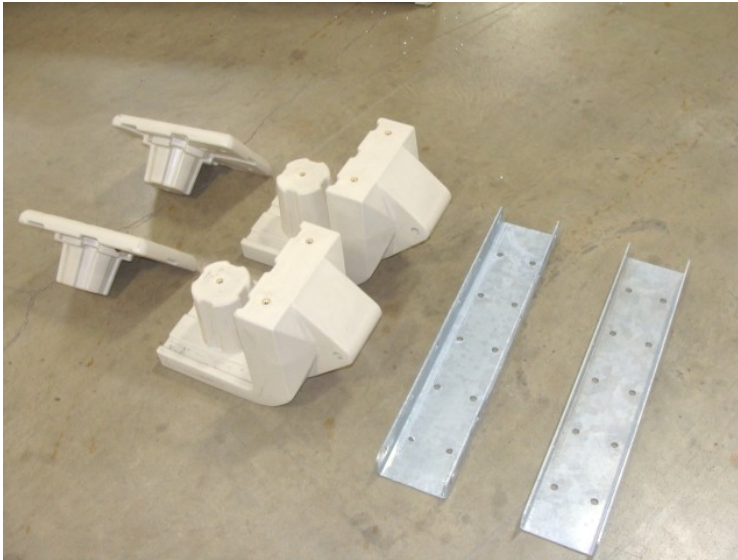




## SLX Port to Universal Dock Instructions Item 22997

1. Parts included:



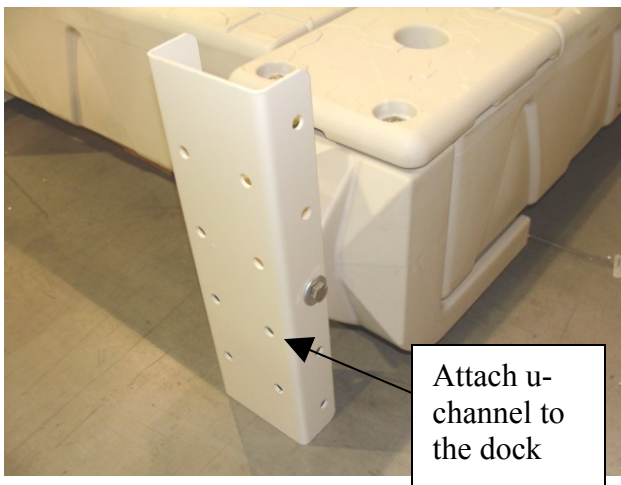
2. Slide the front attachment piece into the post hole at the front of the port. Repeat on other side.



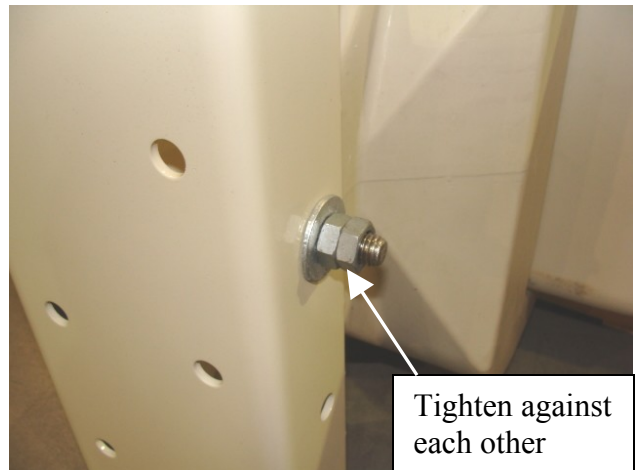
3. Insert the top cap into the post hole and secure with the 3/8 x 1 1/2 bolts and washers. Repeat on other side.



4. Attach the adjustable u-channel to the dock using bolts or lag bolts depending on the dock it is being fastened to. We recommend 1/2" diameter and whatever length is required. Repeat on other side. Attach adjustable u-channel to the front arm using the 1/2 x 7" galvanized bolt, two washers and two jam nuts. Tighten the two nuts against each other to prevent them from coming loose. The port should be level when attached to the u-channel.



Attach u-channel to the dock



Tighten against each other

5. Completed unit.

