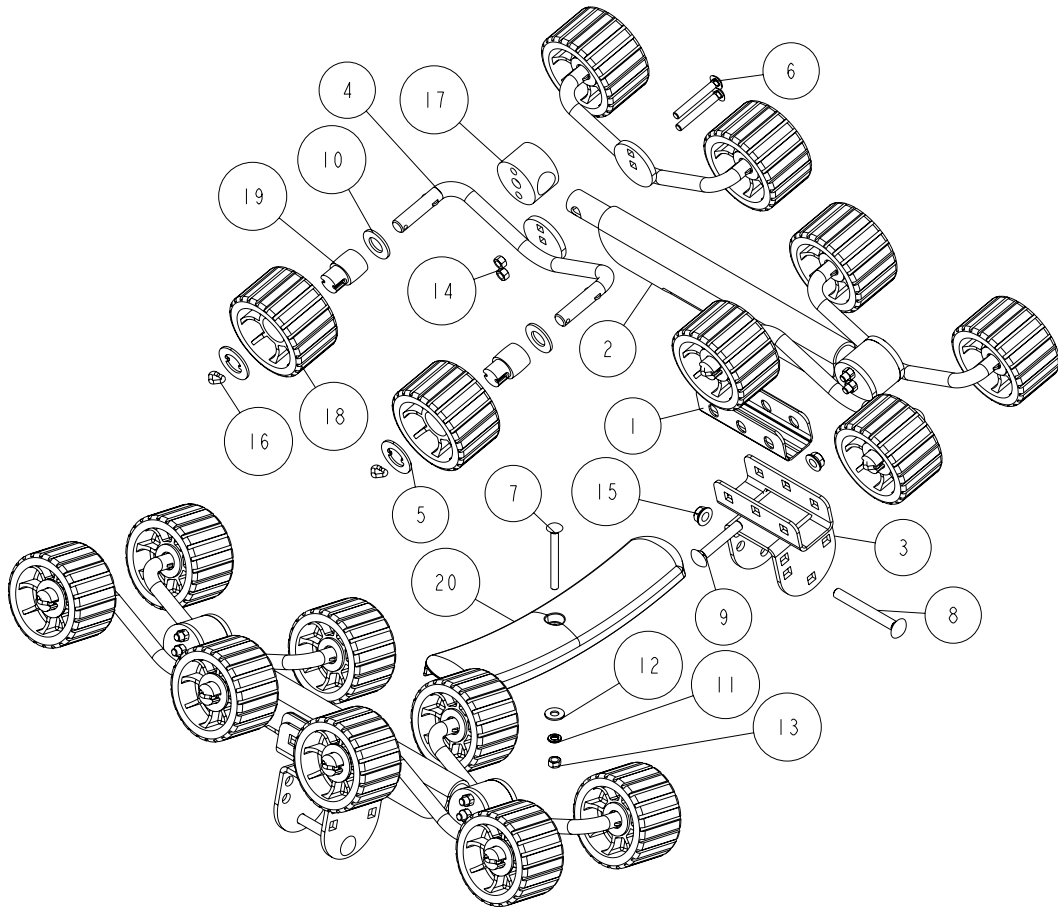


## TA0078- Rollerarm Assy XR 8 Roller 5"



This is a trailer accessory kit used to convert a 4600 lb capacity roller trailer to an XR model. The keel cradle, adjustable crossmember pads and bow support bunks along with the mounting hardware will need to be removed first.

Next, mount the items shown to the front cross member with the pad in the center using a 3/8" X 3 3/4" carriage bolt securing with a 3/8" flat washer, a 3/8" lock washer and a 3/8" hex nut. The roller arm mounting brackets are placed over the front cross member and secured with a 1/2" X 4 1/2" carriage bolt and a 1/2" flange locknut. Place the plastic spacer around the roller arm, place into the mounting bracket aligning the hole in the roller arm, the center hole in the plastic spacer and the center hole in the mounting bracket. Secure using a 1/2" X 3" carriage bolt and 1/2" flange locknut. Repeat the process for the other side to complete the assembly.

For trailer adjustment information, please visit [www.shorelandr.com](http://www.shorelandr.com).

Once the location of the roller arm assemblies is determined, tighten bolts. Adjustment is complete.

ITEM	PART #	DESCRIPTION	QTY	NOTE
1	62087	PLASTIC SPACER REAR PIVOT ARM	2	
2	66873	ROLLERARM XR FRONT	2	
3	66888	ROLLERARM MTG BRKT WMENT	2	
4	68269	INLINE ROLLERPIN 19 1/2	8	
5	68672	FLAT WASHER W/TONGUES FOR ROLLER	16	
6	0210127	CARR 3/8-24 X 3 W/I THRD GR8	8	
7	0210130	CARR 3/8-16 X 3 3/4 GR5	1	
8	0210220	CARR 1/2-13 X 4 1/2 GR5	2	
9	0240210	CARR 1/2-13 X 3 GR5	2	
10	1310121	WASHER SAE FLAT	16	
11	1340030	LOCKWASHER 3/8 S/T MED ULTRASEAL	1	
12	1340095	WASHER USS FLAT 3/8	1	
13	1410109	HEX NUT 3/8-16	1	
14	1440100	HEX LOCKNUT 3/8-24 GRA	8	
15	1440102	HEX LOCKNUT FLANGE 1/2-13 W/T&T	4	
16	1540350	BULL RING PLAIN	16	
17	3510259	SWIVEL BLOCK MOLDED PLASTIC	4	
18	3510260	ROLLER WITH MOLDED HUB 5IN	16	
19	3510261	ROLLER BUSHING MOLDED	16	
20	3510542	MOLDED REAR CROSSMEMBER PAD	1	

DWG: TA0078

REV: 1.2+