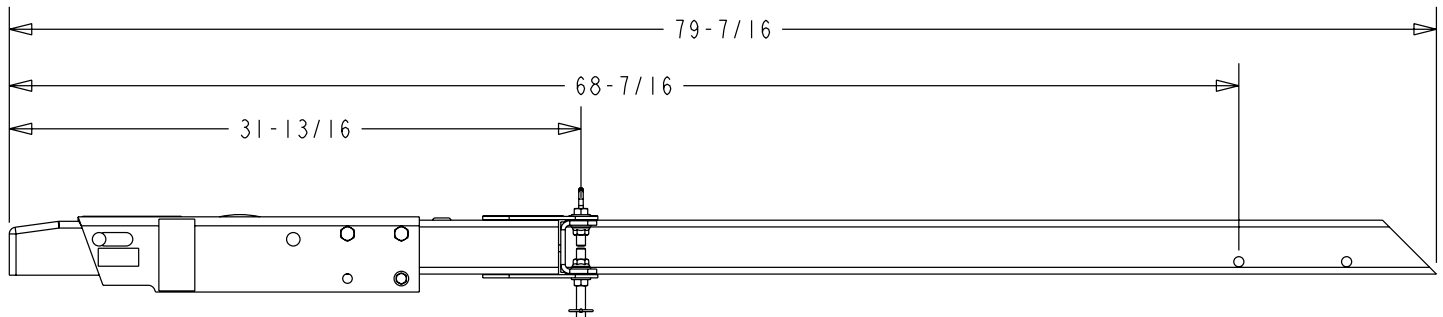
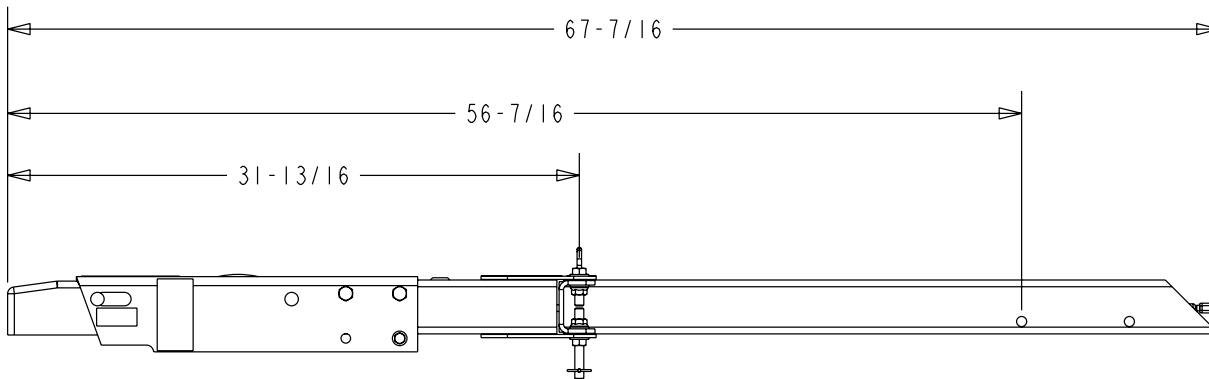


3" Swing Tongue Assemblies for Brake Trailers

The 3" brake swing tongue is designed to replace a straight tongue with brake that is already installed in a trailer. It DOES NOT include the actuator. The actuator on the straight tongue will be used on the swing tongue.

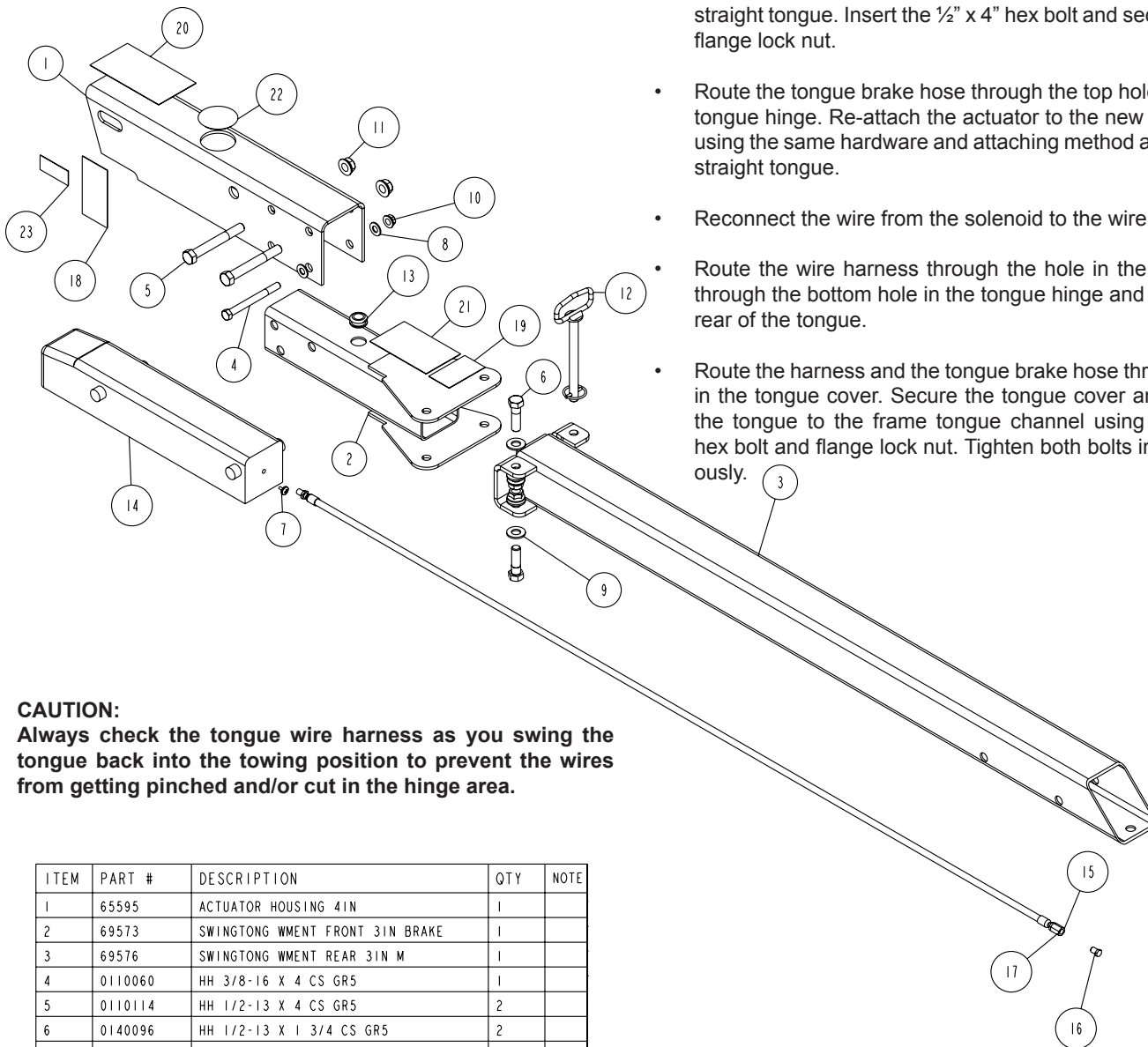
The winch post assembly must never be attached to the swing section of the tongue. The tongue is available in two different length rear sections to accommodate the mounting of the winch post. Choose the correct length that best adapts to the winch post setting for your boat.

The straight tongue must be removed before the swing tongue can be installed. It must also be disassembled so the actuator and safety chains on the straight tongue can be used on the new swing tongue.



Removing the Old Tongue from the Frame

- Remove the boat from the trailer.
- Measure the location of the winch post with respect to the frame tongue channel before removing it so you will know where it needs to be re-installed on the new tongue.
- Remove the winch post from the straight tongue.
- Disconnect the brake line from the side frame brake hose at the coupling located at the rear of the tongue and pull the tongue brake line brake hose out with the actuator when it is removed.
- Disconnect the solenoid wires from the wire harness.
- Remove the actuator from the straight tongue by removing the attaching hardware. Once unbolted, remove the actuator and brake hose assembly.
- Remove the safety chains from the straight tongue.
- Remove the wire harness because it will be re-installed in the swing tongue.
- Loosen the $\frac{1}{2}$ " x $1\frac{1}{2}$ " bolt securing the rear of the tongue to the frame. Remove the bolt completely. Loosen and remove the $\frac{1}{2}$ " x 4" hex bolt securing the tongue to the front of the frame tongue channel. Note that the two mounting bolts just removed will be used to mount the new swing tongue into the frame tongue channel.
- Slide the tongue out the front of the tongue channel.



straight tongue. Insert the 1/2" x 4" hex bolt and secure with a 1/2" flange lock nut.

- Route the tongue brake hose through the top hole in the swing tongue hinge. Re-attach the actuator to the new swing tongue using the same hardware and attaching method as used on the straight tongue.
- Reconnect the wire from the solenoid to the wire harness.
- Route the wire harness through the hole in the tongue, then through the bottom hole in the tongue hinge and finally out the rear of the tongue.
- Route the harness and the tongue brake hose through the hole in the tongue cover. Secure the tongue cover and the rear of the tongue to the frame tongue channel using a 1/2" x 1 1/2" hex bolt and flange lock nut. Tighten both bolts installed previously.

CAUTION:

Always check the tongue wire harness as you swing the tongue back into the towing position to prevent the wires from getting pinched and/or cut in the hinge area.

ITEM	PART #	DESCRIPTION	QTY	NOTE
1	65595	ACTUATOR HOUSING 4IN	1	
2	69573	SWINGTONG WMENT FRONT 3IN BRAKE	1	
3	69576	SWINGTONG WMENT REAR 3IN M	1	
4	0110060	HH 3/8-16 X 4 CS GR5	1	
5	0110114	HH 1/2-13 X 4 CS GR5	2	
6	0140096	HH 1/2-13 X 1 3/4 CS GR5	2	
7	0710031	SCREW #8-32 X 3/8 MACHINE PH SLTD	1	
8	1340095	WASHER USS FLAT 3/8	2	
9	1340100	WASHER USS FLAT 1/2	4	
10	1440101	HEX LOCKNUT FLANGE 3/8-16 W/T&T	1	
11	1440102	HEX LOCKNUT FLANGE 1/2-13 W/T&T	4	
12	3110334	PIN HITCH 1/2 X4" W/CLIP PIN	1	
13	3510597	GROMMET 13/16IN WITH SPLIT 9/16ID	1	
14	3991015	ACTUATOR UFP INNER DISC BRAKE	1	
15	4510505	COUPLING - NO. 302X3 WTHR-HD TUBE	1	
16	4510506	PLUG - #131X3B (BLUEDOT) - BRASS	1	
17	4510563	HOSE BRAKELINE MALE-MALE 78IN	1	
18	4811471	DECAL CAUTION BRAKE LOCKOUT KEY	1	
19	4850183	DECAL SWINGTONGUE PINCH POINT	1	
20	4850235	DECAL FOR COATED UFP ACTUATOR	1	
21	4850422	DECAL SWINGTONGUE SAFETY INSTRUCT	1	
-	5110577	WIRE JUMPER MALE 5/32 TO WASHER	1	
22	7010168	CAP PLASTIC OUTER MEMBER 2IN DI	1	
23	7010188	DECAL PUSH BRKT UFP ACTUATORS	1	

- Match the tongue wire harness plugs with the wires of the frame harness, (yellow to yellow and green to green) then plug together. Wiring is complete. Check to make sure all lighting functions are operating correctly and match the tow vehicle. Make sure all wire protecting grommets are installed to eliminate abrasion.
- Route the brake line tubing from the swing tongue over to the line coming out of the trailer side frame. Connect the two together using the brass coupling provided. Tighten.
- Bleed the brake system using the instructions outlined in the brake owner's manual. Installation is complete.
- Position the winch post assembly on the new swing tongue so it matches the distance from the frame tongue channel it was mounted on the straight tongue. Secure in place using the bolts removed earlier.
- Place the boat on the trailer. Winch the boat into the winch post bow roller and check for proper winch post adjustment.
- If satisfactory, assembly is complete.

Installing the Swing Tongue

- Locate the new swing tongue.
- Insert the swing tongue into the frame tongue channel until the front cross-hole lines with the drilled hole in the tongue. Attach the swing tongue with the hardware removed that attached the