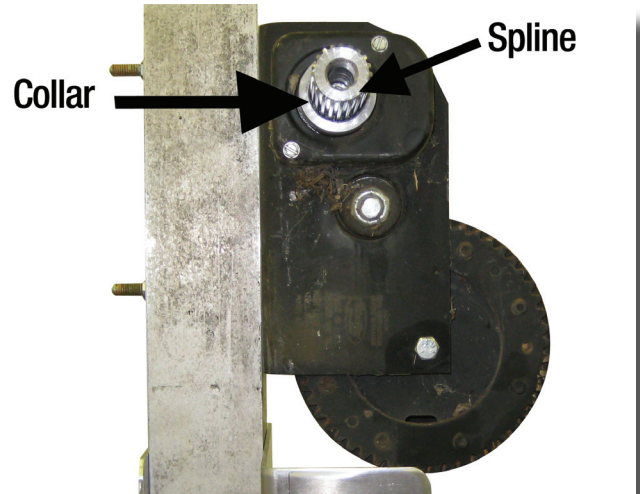
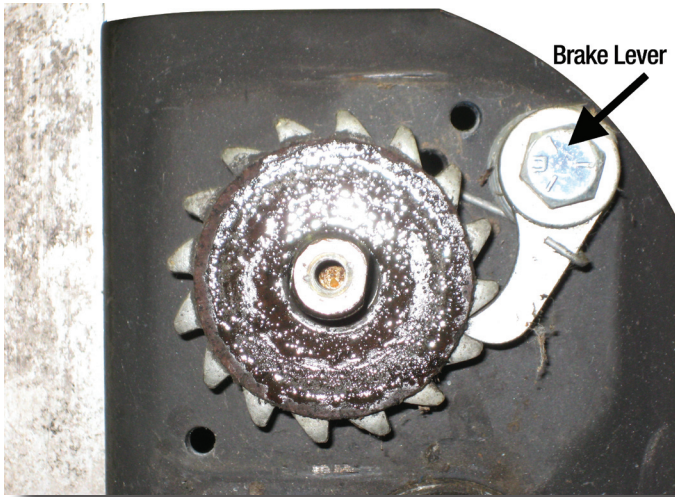


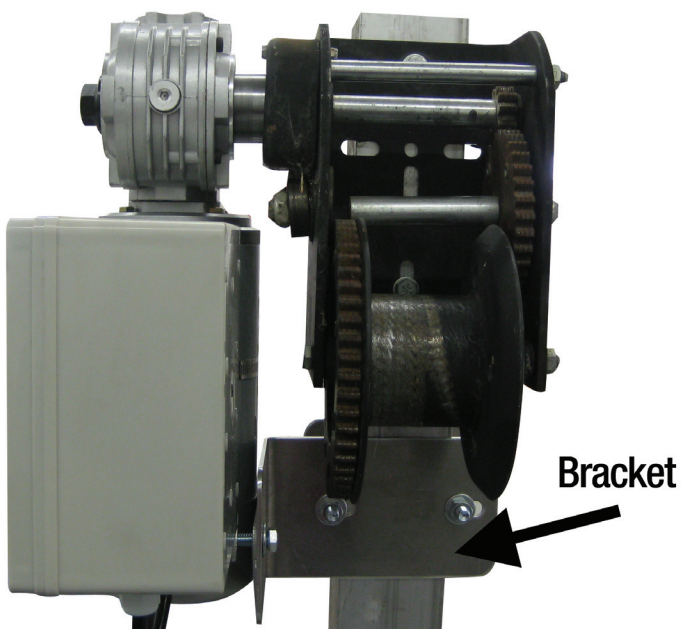
Shelby Installation Guide

Always Lower The Boat Lift Before Attempting Assembly.



1. Lower the Boat Lift.
2. Remove the Wheel.
3. Remove Tin Cover and the Brake Lever.

4. Install the Spline and Collar as Shown.

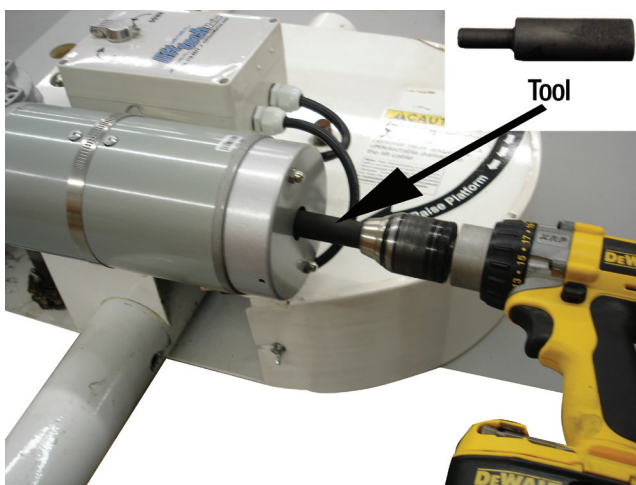


5. Install Brackets as Shown.



6. Slide Motor onto the Spline.
7. Install the Black Washer and Bolt. Tighten to Approximately 70 Foot Pounds.
8. Install the Motor Strap around the Motor.
9. Connect the Lower Bracket and the Motor Strap together. Tighten all the Bolts.

Plug in and Enjoy!



In case of a Power Outage, this Tool may be Inserted into a Drill to Raise or Lower your Lift.

Recommended Extension Cords up to 150 feet 12/3.
Any question regarding Electrical current requirements please call your Authorized Dealer or Lift Tech Marine 1-866-319-8877.

Caution: All power used on your dock or lift needs to be GFI protected at the shore line.