

ShoreStation Installation Guide

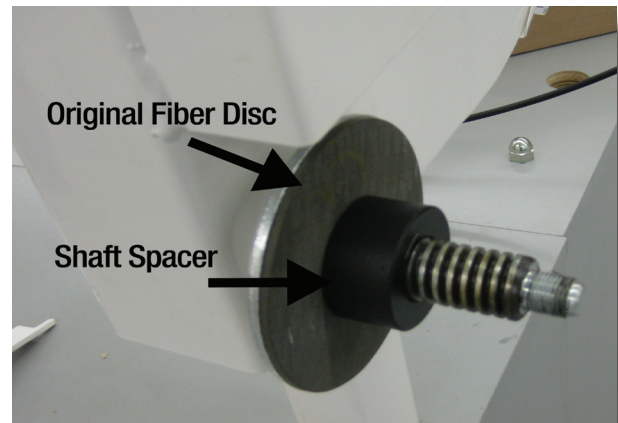
Always Lower The Boat Lift Before Attempting Assembly.

Tools Required: Crescent Wrench, and 9/16 Wrench.

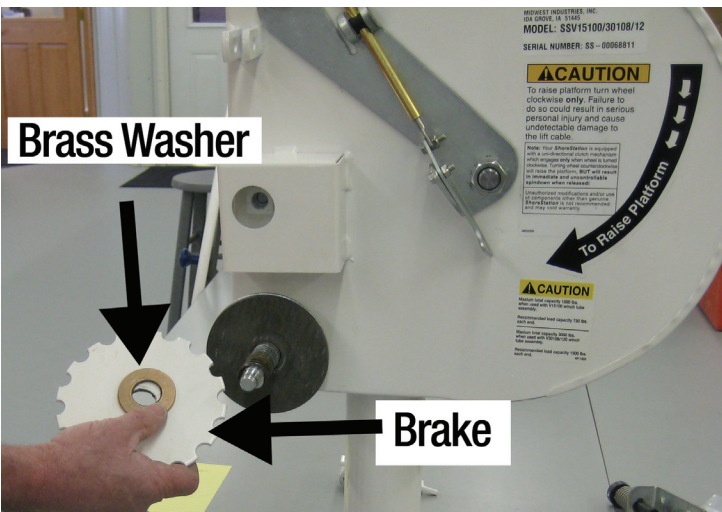


3. Remove the Brake Dog.

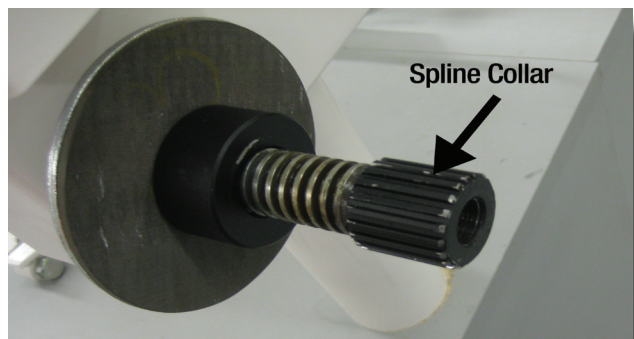
1. Lower the Boat Lift.
2. Remove the Acorn Nut and Wheel.



5. Leave the Original Fiber Disc. Install the Shaft Spacer.



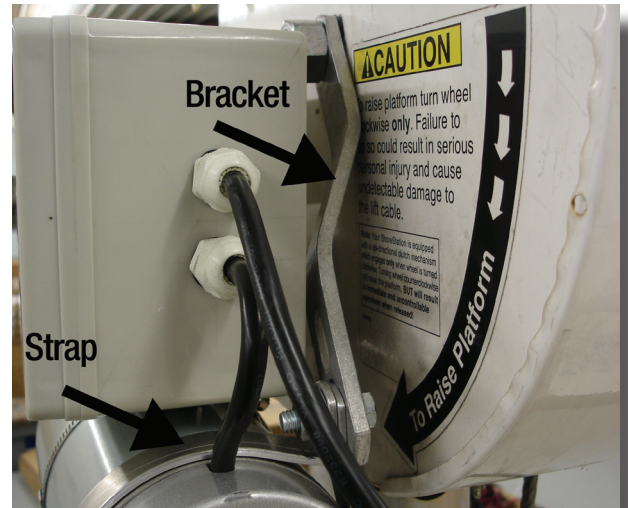
4. Remove the Brake and Brass Washer. You will not use these pieces any longer.



6. Install the Spline Collar.



7. Slide the Motor onto the Spline so it sits level.



8. Install the Strap around the Motor. Install the bracket and tighten the bolts.



9. Level Motor with Strap and Bracket Installed.



10. Install the Bolt and Washer onto the Motor and Tighten to Approximately 70 Foot Pounds.

Plug in and Enjoy!



In case of a Power Outage. This Tool may be Inserted into a Drill to Raise or Lower your Lift.

Recommended Extension Cords up to 150 feet 12/3.

Any question regarding Electrical current requirements please call your Authorized Dealer or Lift Tech Marine 1-866-319-8877.

Caution: All power used on your dock or lift needs to be GFI protected at the shore line.