

C	15342	MJH	03-12-12	(8)210-00340 AND (8)210-00384 REPLACED (16)210-00268, UPDATED ASSEMBLY; ADDED DIMENSIONS ON PAGE 5, UPDATED PRINT.
B	15447	LJW	01-20-12	ADDED OPTIONS PAGE THREE
DWG. REV.	ECR/NDR NUMBER	REVISED BY	DATE	DESCRIPTION

ALL DIMENSIONS ARE IN INCHES  
UNLESS OTHERWISE STATED  
TOLERANCES EXCEPT AS NOTED

DECIMALS:

.X	±0.100
.XX	±0.060
.XXX	±0.030
.XXXX	±0.010

ANGLES:  
±1°

ALL FORMED ANGLES  
EQUAL 90° UNLESS  
NOTED OTHERWISE

( ) INDICATES REFERENCE

THE INFORMATION IN THIS DRAWING IS THE SOLE  
PROPERTY OF KARAVAN TRAILERS, INC. ANY  
REPRODUCTION IN PART OR WHOLE WITHOUT  
THE WRITTEN PERMISSION OF KARAVAN TRAILERS,  
INC. IS PROHIBITED.

APPROVED BY: ---

DRAWN BY: **KAY HOPF**

DATE: 04-27-10

SHEET: 1 OF 7

SCALE: N/A

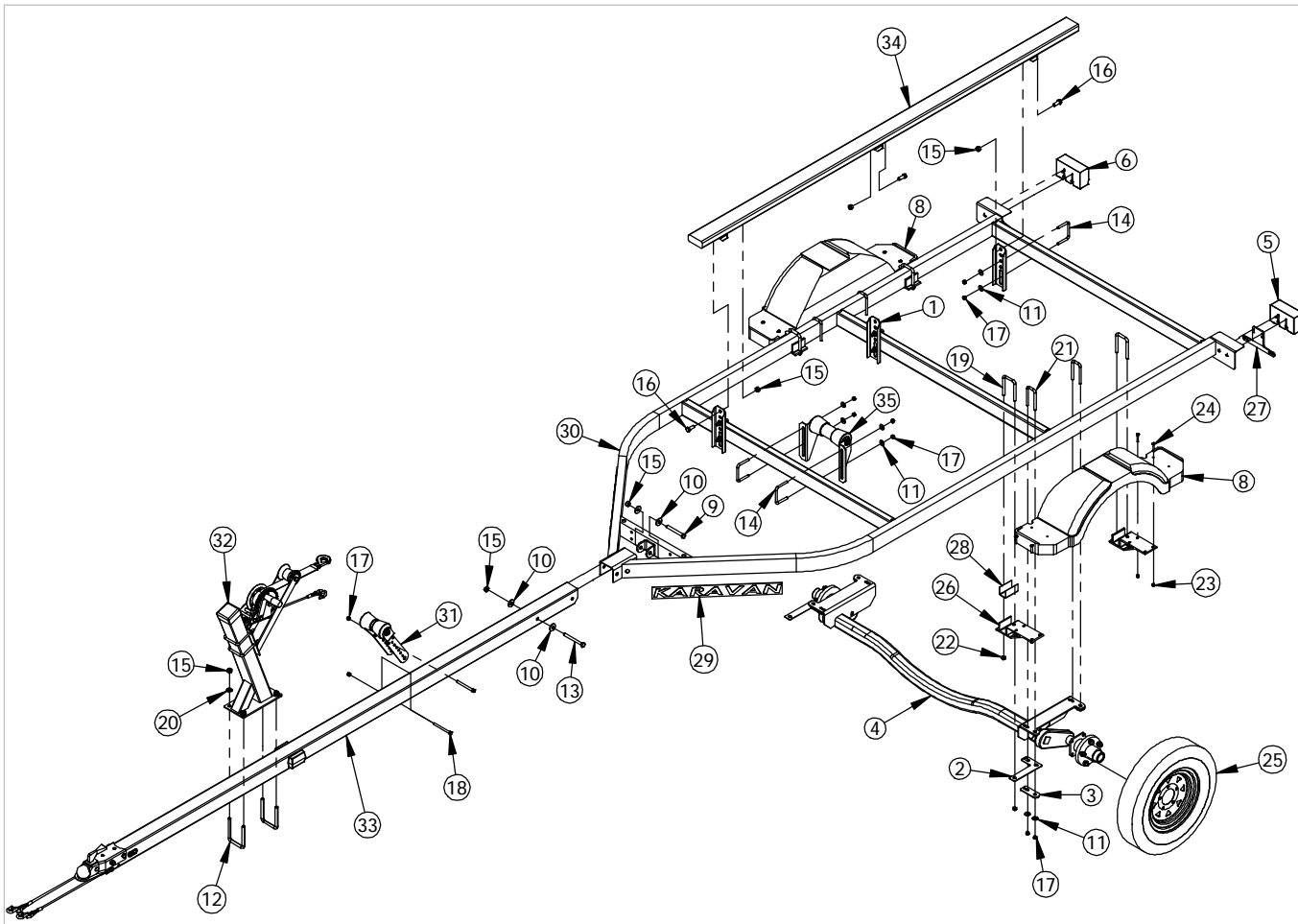
**KARAVAN**  
TRAILERS

TITLE: KBL-1500-56-TORSION

MAT'L: SEE B.O.M.

FINISH: N/A

DWG. #: KBL-1500-56-TORSION



ITEM NO.	SEE NOTES	PART NUMBER	DESCRIPTION	QTY.
1		100-00015	BUNK BRACKET	6
2		100-03675	L-BRACKET	2
3		100-03741	BACKING PLATE	4
4		200-00049	TORSION AXLE 2100#	1
5	2	205-00155	TAIL LIGHT LH	1
6	2	205-00156	TAIL LIGHT RH	1
7	2	205-00168	WIRE HARNESS	1
8		206-00056	FENDER	2
9		210-00014	.50"-13 X 4.00" HX HD BOLT	1
10		210-00017	.50" FLAT WASHER	4
11		210-00025	.375" FLAT WASHER	32
12		210-00029	.50"-13 X 3.063" X 4.50" U-BOLT	2
13		210-00040	.50"-13 X 4.50" HX HD BOLT	1
14		210-00054	.375"-16 X 3.125" X 2.37" U-BOLT	12
15		210-00061	.50"-13 CENTERLOCK HEX NUT	12
16		210-00072	.50"-13 X 1.25" HX HD BOLT	6
17		210-00076	.375"-16 CENTERLOCK HEX NUT	34
18		210-00080	.375"-16 X 4.00" HX HD BOLT	2
19		210-00087	.438"-14 X 2.25" X 4.00" U-BOLT	4
20		210-00240	.50" SAE FLAT WASHER ZINC	4
21		210-00248	.375"-16 X 1.563" X 4.00" U-BOLT	4
22		210-00330	.438"-14 CENTERLOCK HEX NUT	8
23		210-00340	.250"-20 NYLOCK HEX NUT	8
24		210-00384	SCREW 6 LOBE TRUSS HD 1/4"-20 X 1-1/2"	8
25		220-00044	5-HOLE TIRE & RIM	2
26		227-00347	FENDER BRACKET	4
27		229-00006	LICENSE PLATE BRACKET	1
28		229-00421	ADHESIVE FIBER GASKET	4
29		234-00060	LOGO	2
30	1	300-02194	FRAME WELDMENT	1
31	3	310-00324	ROLLER ASSY	1
32	3	310-01693	WINCH ASSY	1
33	3	310-02568	TONGUE ASSY	1
34	3	310-02690	BUNK ASSY	2
35	3	310-02691	KEEL ROLLER ASSY	3

NOTE:

- 1.) SEE ADDITIONAL OPTIONS ON PAGE THREE.
- 2.) SEE ADDITIONAL INSTRUCTIONS ON PAGE FOUR.
- 3.) SEE ADDITIONAL INSTRUCTIONS ON PAGE SEVEN.

C	15342	MJH	03-12-12	(Ø)210-00340 AND (Ø)210-00384 REPLACED (16)210-00268, UPDATED ASSEMBLY; ADDED DIMENSIONS ON PAGE 5, UPDATED PRINT.
B	15447	LJW	01-20-12	ADDED OPTIONS PAGE THREE
DWG. REV.	ECR/NDR NUMBER	REVISED BY	DATE	DESCRIPTION

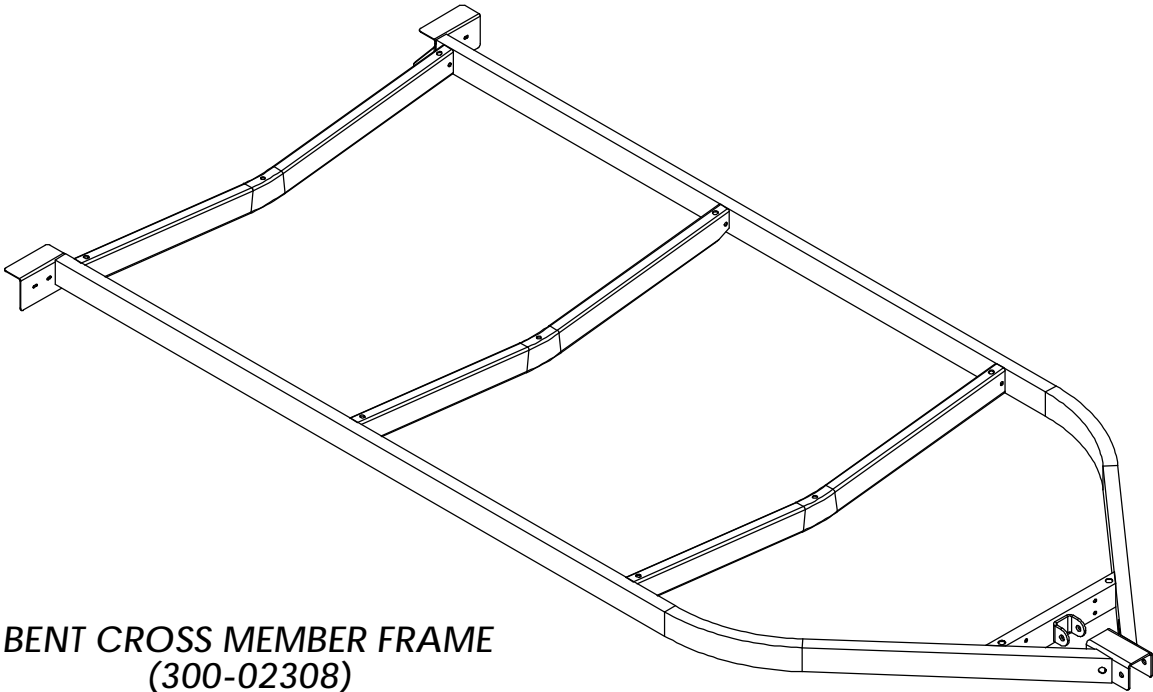
ALL DIMENSIONS ARE IN INCHES  
UNLESS OTHERWISE STATED  
TOLERANCES EXCEPT AS NOTED  
DECIMALS:  
.X ±0.100  
.XX ±0.060  
.XXX ±0.030  
.XXXX ±0.010  
ANGLES:  
±1°  
ALL FORMED ANGLES  
EQUAL 90° UNLESS  
NOTED OTHERWISE  
( ) INDICATES REFERENCE

THE INFORMATION IN THIS DRAWING IS THE SOLE  
PROPERTY OF KARAVAN TRAILERS, INC. ANY  
REPRODUCTION IN PART OR WHOLE WITHOUT  
THE WRITTEN PERMISSION OF KARAVAN TRAILERS,  
INC. IS PROHIBITED.  
APPROVED BY: ---  
DRAWN BY: KAY HOPF  
DATE: 04-27-10  
SHEET: 2 OF 7  
SCALE: N/A

**KARAVAN**  
TRAILERS

TITLE: KBL-1500-56-TORSION  
MAT'L: SEE B.O.M.  
FINISH: N/A  
DWG. #: KBL-1500-56-TORSION

TRAILER OPTIONS



BENT CROSS MEMBER FRAME  
(300-02308)

C	15342	MJH	03-12-12	(8)210-00340 AND (8)210-00384 REPLACED (16)210-00268, UPDATED ASSEMBLY. ADDED DIMENSIONS ON PAGE 5, UPDATED PRINT.
B	15447	LJW	01-20-12	ADDED OPTIONS PAGE THREE
DWG. REV.	ECR/NDR NUMBER	REVISED BY	DATE	DESCRIPTION

ALL DIMENSIONS ARE IN INCHES  
UNLESS OTHERWISE STATED  
TOLERANCES EXCEPT AS NOTED

DECIMALS:  
.X ±0.100  
XX ±0.060  
XXX ±0.030  
XXXX ±0.010

ANGLES:  
±1°

ALL FORMED ANGLES  
EQUAL 90° UNLESS  
NOTED OTHERWISE

( ) INDICATES REFERENCE

THE INFORMATION IN THIS DRAWING IS THE SOLE  
PROPERTY OF KARAVAN TRAILERS, INC. ANY  
REPRODUCTION IN PART OR WHOLE WITHOUT  
THE WRITTEN PERMISSION OF KARAVAN TRAILERS,  
INC. IS PROHIBITED.

APPROVED BY: ---

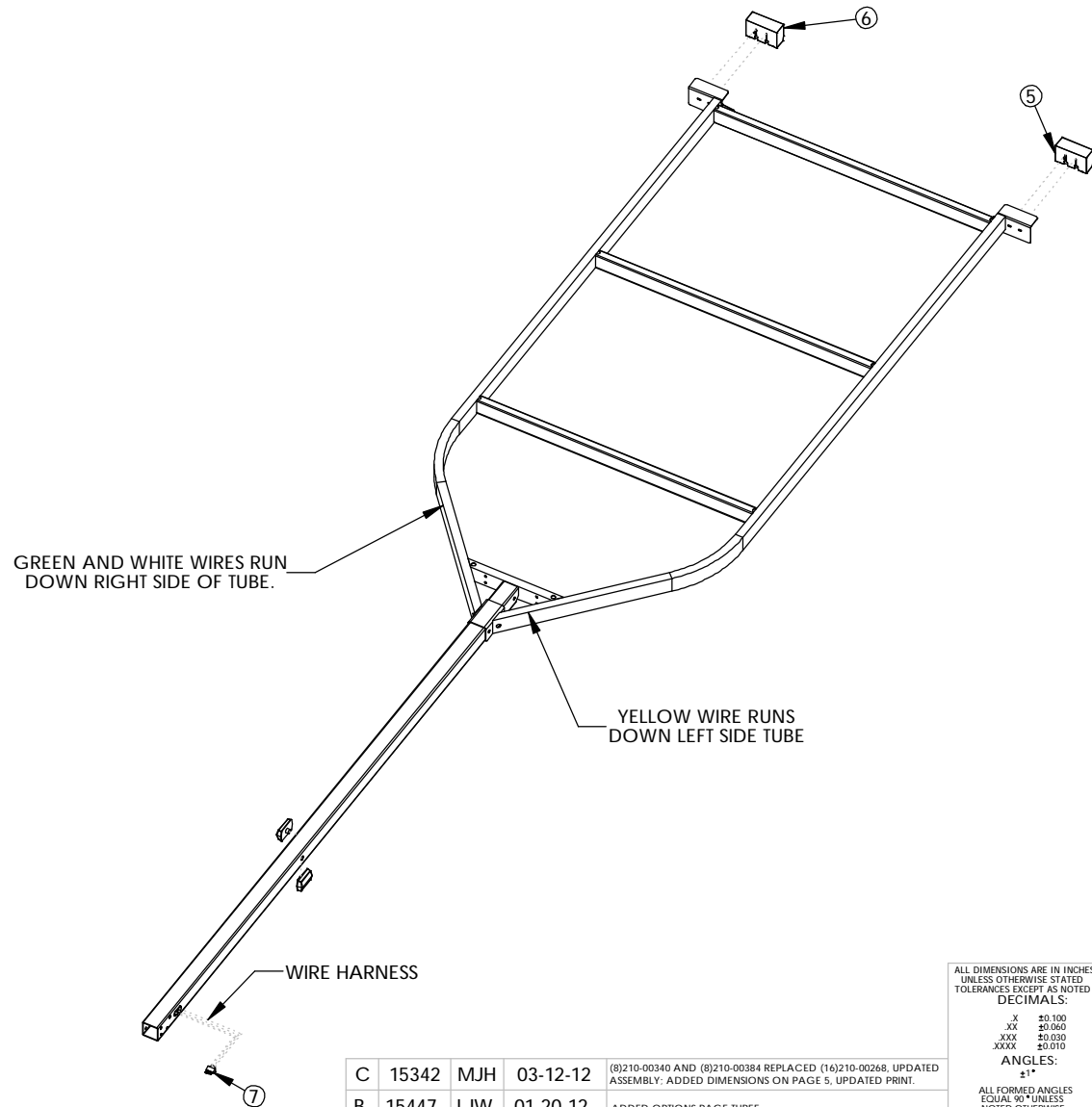
DRAWN BY: KAY HOFF

DATE: 04-27-10

SHEET: 3 OF 7

SCALE: N/A

<b>KARAVAN</b> TRAILERS	
TITLE:	KBL-1500-56 TORSION
MAT'L:	SEE B.O.M.
FINISH:	N/A
DWG. #:	KBL-1500-56-TORSION



C	15342	MJH	03-12-12	(8)210-00340 AND (8)210-00384 REPLACED (16)210-00268, UPDATED ASSEMBLY; ADDED DIMENSIONS ON PAGE 5, UPDATED PRINT.
B	15447	LJW	01-20-12	ADDED OPTIONS PAGE THREE
DWG. REV.	ECR/MDR NUMBER	REVISED BY	DATE	DESCRIPTION

ALL DIMENSIONS ARE IN INCHES  
UNLESS OTHERWISE STATED  
TOLERANCES EXCEPT AS NOTED

DECIMALS:

.X	±0.100
.XX	±0.060
.XXX	±0.030
.XXXX	±0.010

ANGLES:  
±1°

ALL FORMED ANGLES  
EQUAL 90° UNLESS  
NOTED OTHERWISE

( ) INDICATES REFERENCE

THE INFORMATION IN THIS DRAWING IS THE SOLE  
PROPERTY OF KARAVAN TRAILERS, INC. ANY  
REPRODUCTION IN PART OR WHOLE WITHOUT  
THE WRITTEN PERMISSION OF KARAVAN TRAILERS,  
INC. IS PROHIBITED.

APPROVED BY: ---

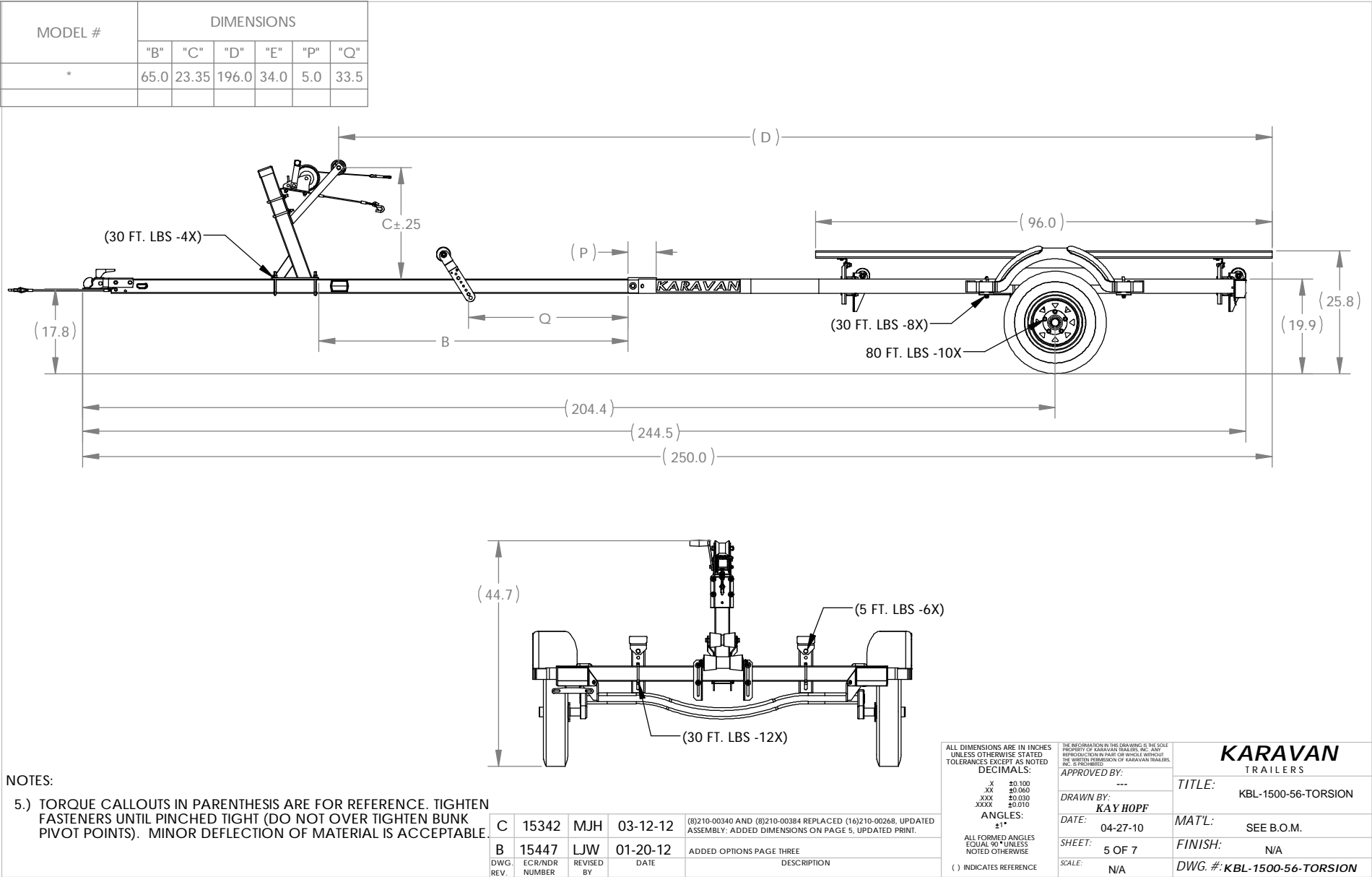
DRAWN BY: **KAY HOPF**

DATE: 04-27-10

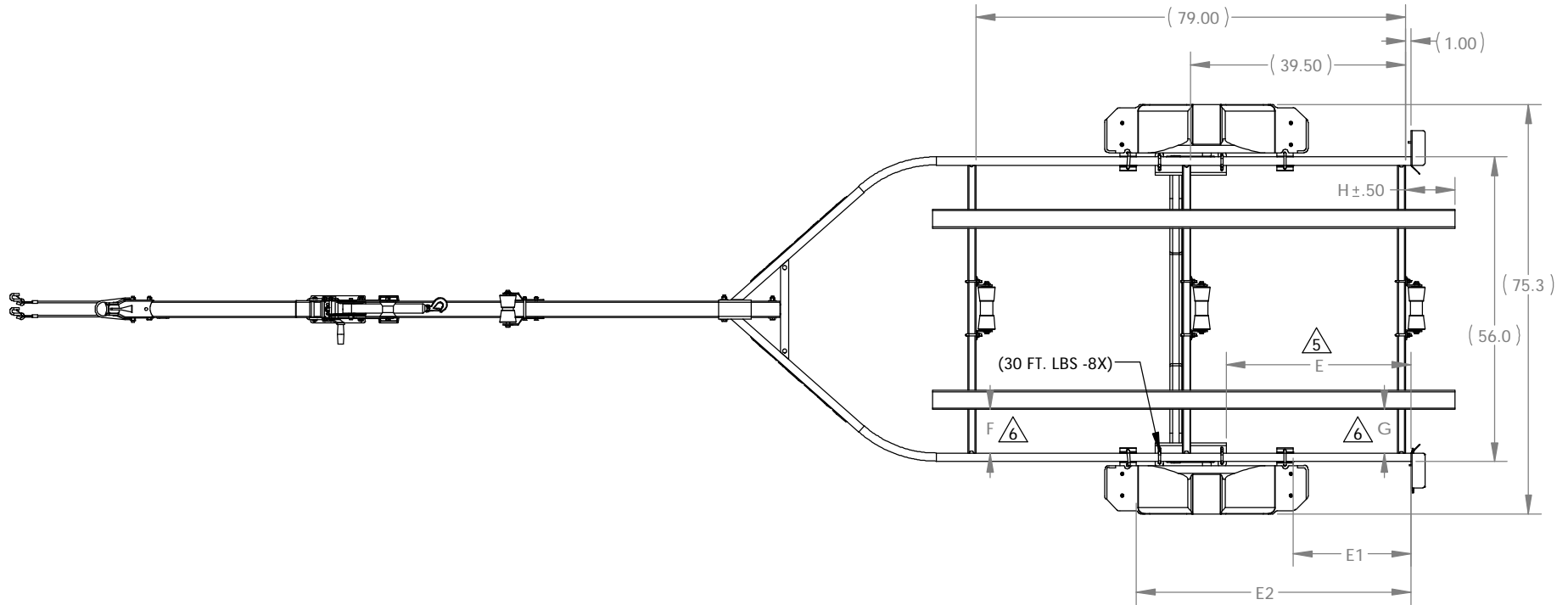
SHEET: 4 OF 7

SCALE: N/A

<b>KARAVAN</b> TRAILERS	
TITLE:	KBL-1500-56-TORSION
MAT'L:	SEE B.O.M.
FINISH:	N/A
DWG. #:	KBL-1500-56-TORSION



MODEL #	DIMENSIONS					
	"E"	"E1"	"E2"	"F"	"G"	"H"
*	34.0	21.65	50.50	8.50	8.50	9.0



# NOTES:

- 5 AXLE LOCATION DIMENSION IS FROM BACK OF AXLE TO THE BACK OF THE FRAME.
- 6 BUNK LOCATION IS THE DISTANCE FROM THE INSIDE OF THE SIDE TUBE TO THE OUTSIDE EDGE OF THE BUNK BRACKET

C	15342	MJH	03-12-12	(8)210-00340 AND (8)210-00384 REPLACED (16)210-00268, UPDATED ASSEMBLY; ADDED DIMENSIONS ON PAGE 5, UPDATED PRINT.
B	15447	LJW	01-20-12	ADDED OPTIONS PAGE THREE
DWG. REV.	ECR/NDR NUMBER	REVISED BY	DATE	DESCRIPTION

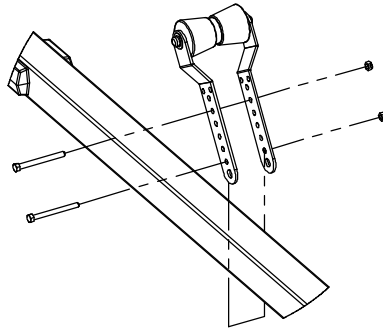
ALL DIMENSIONS ARE IN INCHES  
UNLESS OTHERWISE STATED  
TOLERANCES EXCEPT AS NOTED  
DECIMALS:  
.X ±0.100  
.XX ±0.060  
.XXX ±0.030  
.XXXX ±0.010  
ANGLES:  
±1°  
ALL FORMED ANGLES  
EQUAL 90° UNLESS  
NOTED OTHERWISE  
( ) INDICATES REFERENCE

THE INFORMATION IN THIS DRAWING IS THE SOLE  
PROPERTY OF KARAVAN TRAILERS, INC. ANY  
REPRODUCTION IN PART OR WHOLE WITHOUT  
THE WRITTEN PERMISSION OF KARAVAN TRAILERS,  
INC. IS PROHIBITED.  
APPROVED BY: ---  
DRAWN BY: KAY HOPF  
DATE: 04-27-10  
SHEET: 6 OF 7  
SCALE: N/A

**KARAVAN**  
TRAILERS  
TITLE: KBL-1500-56-TORSION  
MAT'L: SEE B.O.M.  
FINISH: N/A  
DWG. #: KBL-1500-56-TORSION

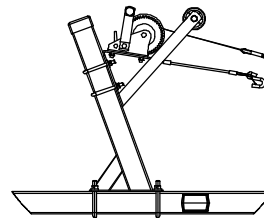
## ROLLER MOUNTING INSTRUCTIONS

VIEW 2

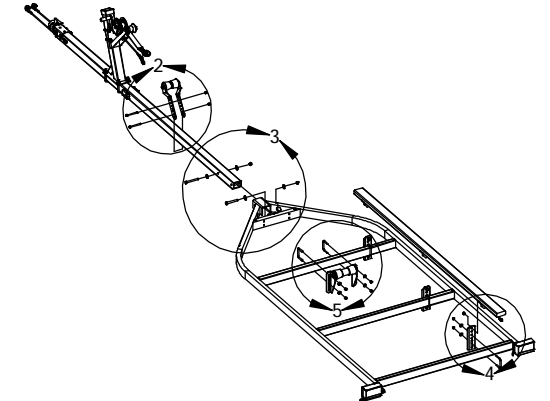


## WINCH INSTRUCTIONS

VIEW 1

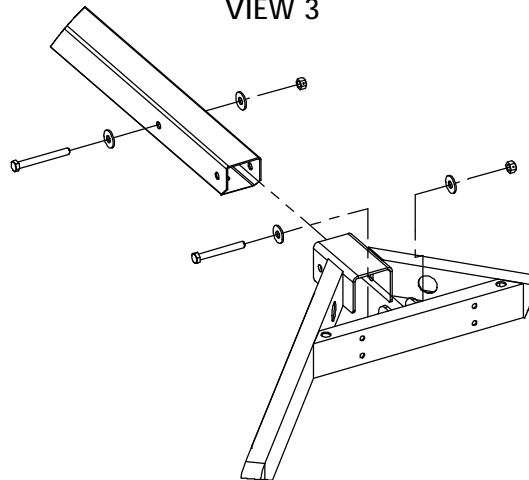


WINCH STRAP WITH HOOK RUNS UNDER THE ROLLER BEFORE BEING HOOKED TO THE BOW EYE OF THE BOAT



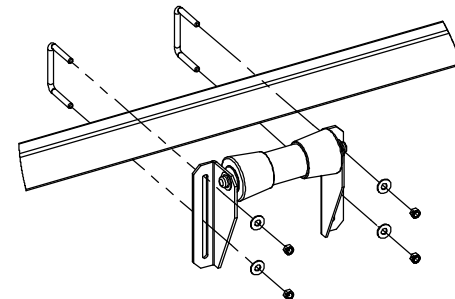
## TONGUE MOUNTING INSTRUCTIONS

VIEW 3



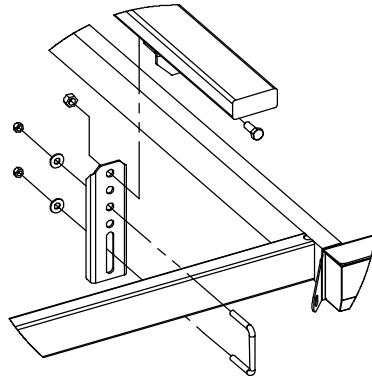
## KEEL ROLLER MOUNTING INSTRUCTIONS

VIEW 5



## BUNK MOUNTING INSTRUCTIONS

VIEW 4



ALL DIMENSIONS ARE IN INCHES  
UNLESS OTHERWISE STATED  
TOLERANCES EXCEPT AS NOTED

DECIMALS:

.X ±0.100  
XX ±0.060  
XXX ±0.030  
XXXX ±0.010

ANGLES:

±1°

ALL FORMED ANGLES  
EQUAL 90° UNLESS  
NOTED OTHERWISE

( ) INDICATES REFERENCE

THE INFORMATION IN THIS DRAWING IS THE SOLE  
PROPERTY OF KARAVAN TRAILERS, INC. ANY  
REPRODUCTION IN PART OR WHOLE WITHOUT  
THE WRITTEN PERMISSION OF KARAVAN TRAILERS,  
IS PROHIBITED.

APPROVED BY:

---

DRAWN BY:  
KAY HOPF

DATE: 04-27-10

SHEET: 7 OF 7

SCALE:  
N/A

**KARAVAN**  
TRAILERS

TITLE: KBL-1500-56-TORSION

MAT'L: SEE B.O.M.

FINISH: N/A

DWG. #: KBL-1500-56-TORSION

C	15342	MJH	03-12-12	(0)210-00340 AND (0)210-00384 REPLACED (16)210-00268, UPDATED ASSEMBLY; ADDED DIMENSIONS ON PAGE 5, UPDATED PRINT.
B	15447	LJW	01-20-12	ADDED OPTIONS PAGE THREE
DWG. REV.	ECR/NDR NUMBER	REVISED BY	DATE	DESCRIPTION