

J	15543	KMH	07-09-12	310-01903 REPLACED 310-02255
H	15342	MJH	02-21-12	(8)210-00384 AND (8)210-00340 REPLACED (16)210-00268; UPDATED DIMENSIONS ON PAGES 4 AND 5.
DWG. REV.	ECR/NDR NUMBER	REVISED BY	DATE	DESCRIPTION

ALL DIMENSIONS ARE IN INCHES
UNLESS OTHERWISE STATED
TOLERANCES EXCEPT AS NOTED

DECIMALS:

.X	±0.100
.XX	±0.060
.XXX	±0.030
.XXXX	±0.010

ANGLES:

±1°

ALL FORMED ANGLES
EQUAL 90° UNLESS
NOTED OTHERWISE

() INDICATES REFERENCE

THE INFORMATION IN THIS DRAWING IS THE SOLE
PROPERTY OF KARAVAN TRAILERS, INC. ANY
REPRODUCTION IN PART OR WHOLE WITHOUT
THE WRITTEN PERMISSION OF KARAVAN TRAILERS,
INC. IS PROHIBITED.

APPROVED BY:

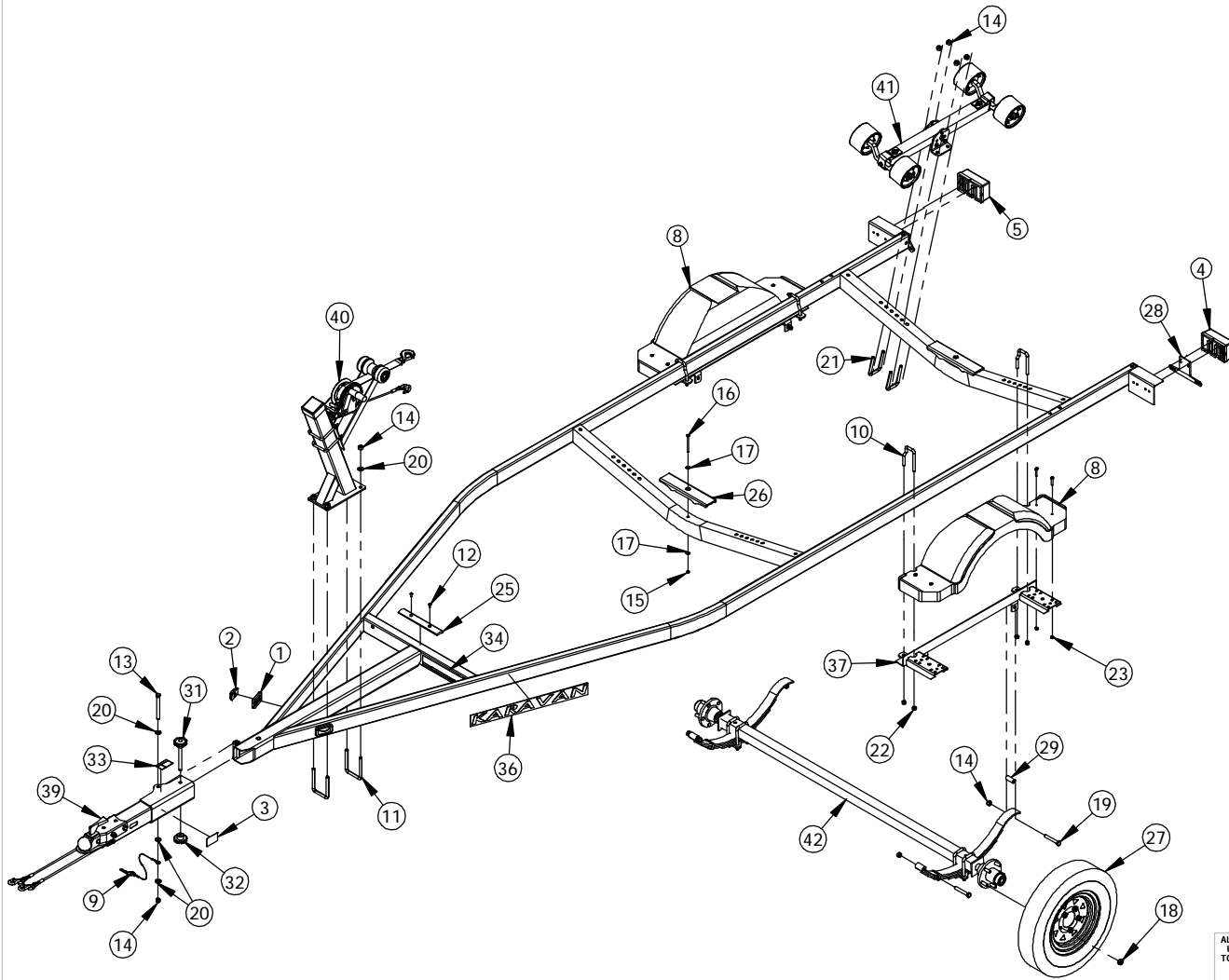
DRAWN BY:
MATTHEW HALFMANN

DATE: 03-19-07

SHEET: 1 OF 6

SCALE: N/A

KARAVAN TRAILERS	
TITLE:	KCR-1600-60
MAT'L:	SEE B.O.M.
FINISH:	N/A
DWG. #:	KCR-1600-60



ITEM NO.	SEE NOTES	PART NUMBER	DESCRIPTION	QTY.
1		205-00046	SNAP-LOC GROMMET	2
2	2	205-00126	SNAP-LOC LIGHT	2
3		205-00142	AMBER REFLECTOR TAPE	2
4	2	205-00159	TAIL LIGHT LH (LED)	1
5	2	205-00160	TAIL LIGHT RH (LED)	1
6	2	205-00168	WIRE HARNESS	1
7	2	205-00210	PIGTAIL	2
8		206-00056	FENDER	2
9		207-00020	PIN & LANYARD	1
10		210-00024	.438" X 4.25" FLARED U-BOLT	4
11		210-00029	.50"-13 X 3.063" X 4.50" U-BOLT	2
12		210-00057	#10 X .625" HX WSHR HD SCREW	2
13		210-00060	.50"-13 X 5.00" HX HD BOLT	1
14		210-00061	.50"-13 CENTERLOCK HEX NUT	25
15		210-00085	.25"-20 CENTER LOCK NUT	2
16		210-00123	.25"-20 X 3.50" TAP BOLT	2
17		210-00136	.25" FLAT WASHER	4
18		210-00137	.50"-20 X .813" LUG NUT	10
19		210-00230	.50-13 X 3.25" HX HD BOLT	4
20		210-00240	.50" SAE FLAT WASHER ZINC	7
21		210-00284	.50"-13 X 2.063" X 4.50" U-BOLT	8
22		210-00330	.438"-14 CENTERLOCK HEX NUT	8
23		210-00340	.250"-20 NYLOCK HEX NUT	8
24		210-00384	SCREW 6 LOBE TRUSS HD 1/4"-20 X 1-1/2"	8
25		216-00019	KEEL PROTECTOR	1
26		216-00034	KEEL PROTECTOR	2
27		220-00018	4.8 X 12B 5H	2
28		229-00006	LICENSE PLATE BRACKET	1
29		229-00096	BUSHING	2
30	2	229-00245	.375" LOOM	1
31		229-00287	HAND BOLT	1
32		229-00289	HAND NUT	1
33		234-00023	PINCH POINT LOGO	1
34		234-00032	TRAILERING CHECKLIST	1
35		234-00058	LOGO	4
36		234-00060	LOGO	2
37		300-00987	SPRING HANGER WELDMENT	2
38		300-01790	FRAME WELDMENT	1
39	1	310-01825	TONGUE SUB-ASSY	1
40		310-01903	WINCH ASSY	1
41	1	310-02181	ROLLER ASSY	4
42		310-02245	AXLE ASSY	1

NOTES:

- 1.) SEE ADDITIONAL INSTRUCTIONS ON PAGE SIX.
- 2.) SEE ADDITIONAL INSTRUCTIONS ON PAGE THREE.

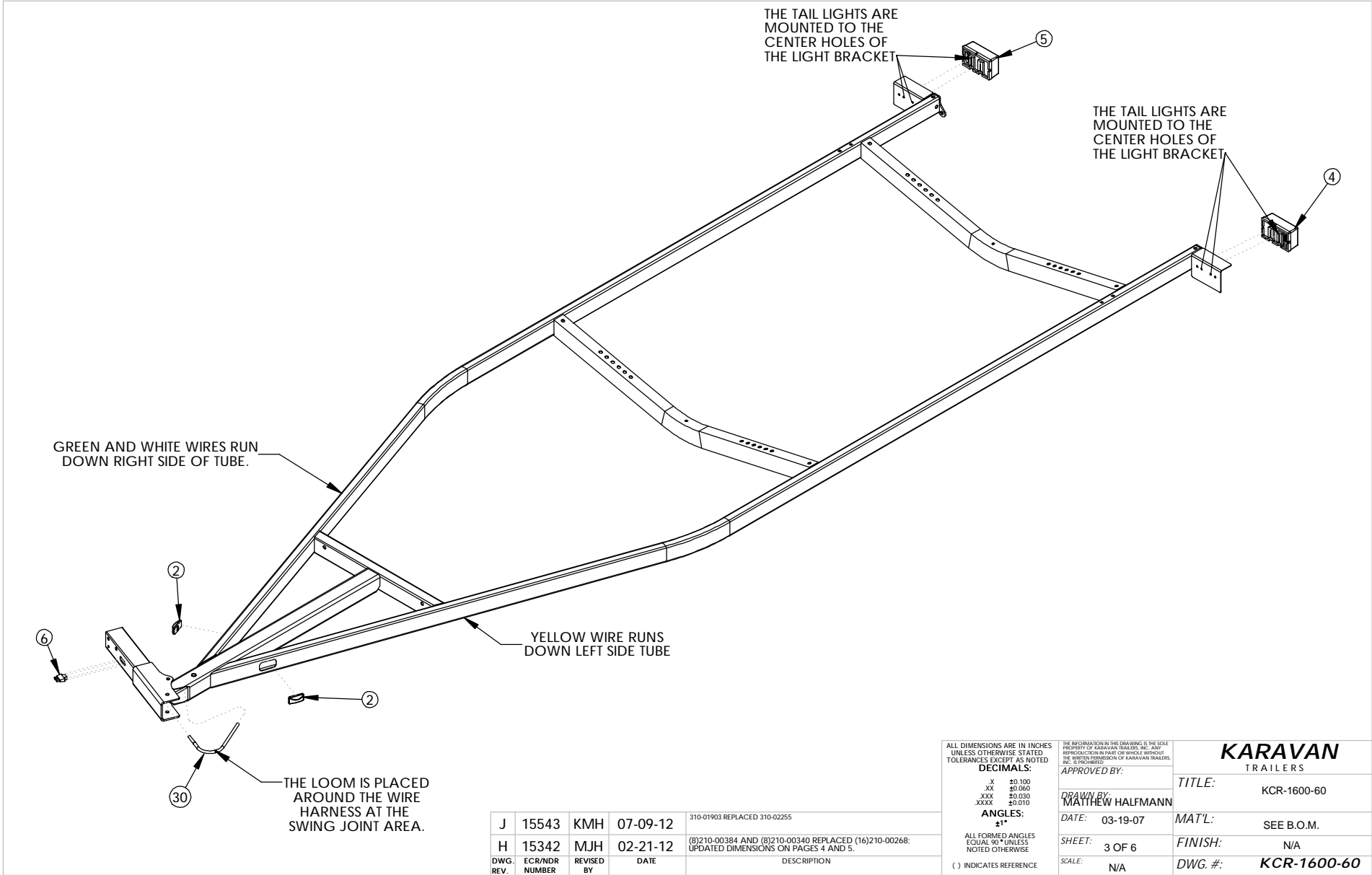
J	15543	KMH	07-09-12	310-01903 REPLACED 310-02255
H	15342	MJH	02-21-12	(8)210-00384 AND (8)210-00340 REPLACED (16)210-00268; UPDATED DIMENSIONS ON PAGES 4 AND 5.
DWG. REV.	ECR/NDR NUMBER	REVISED BY	DATE	DESCRIPTION

ALL DIMENSIONS ARE IN INCHES
UNLESS OTHERWISE STATED
TOLERANCES EXCEPT AS NOTED
DECIMALS:
.X ±0.100
.XX ±0.060
.XXX ±0.030
XXXX ±0.010
ANGLES:
±1°
ALL FORMED ANGLES
EQUAL 90° UNLESS
NOTED OTHERWISE
() INDICATES REFERENCE

THE INFORMATION IN THIS DRAWING IS THE SOLE
PROPERTY OF KARAVAN TRAILERS, INC. ANY
REPRODUCTION IN PART OR WHOLE WITHOUT
THE WRITTEN PERMISSION OF KARAVAN TRAILERS.
APPROVED BY:
DRAWN BY:
MATTHEW HALFMANN
DATE: 03-19-07
SHEET: 2 OF 6
SCALE: N/A

KARAVAN
TRAILERS

TITLE: KCR-1600-60
MAT'L: SEE B.O.M.
FINISH: N/A
DWG. #: KCR-1600-60



J	15543	KMH	07-09-12	310-01903 REPLACED 310-02255
H	15342	MJH	02-21-12	(8)210-00384 AND (8)210-00340 REPLACED (16)210-00268; UPDATED DIMENSIONS ON PAGES 4 AND 5.
DWG. REV.	ECR/NDR NUMBER	REVISED BY	DATE	DESCRIPTION

ALL DIMENSIONS ARE IN INCHES
UNLESS OTHERWISE STATED
TOLERANCES EXCEPT AS NOTED

DECIMALS:

.X	±0.100
.XX	±0.060
.XXX	±0.030
.XXXX	±0.010

ANGLES:
±1°

ALL FORMED ANGLES
EQUAL 90° UNLESS
NOTED OTHERWISE

() INDICATES REFERENCE

THE INFORMATION IN THIS DRAWING IS THE SOLE
PROPERTY OF KARAVAN TRAILERS, INC. ANY
REPRODUCTION IN PART OR WHOLE WITHOUT
THE WRITTEN PERMISSION OF KARAVAN TRAILERS,
INC. IS PROHIBITED.

APPROVED BY:

DRAWN BY:
MATTHEW HALFMANN

DATE: 03-19-07

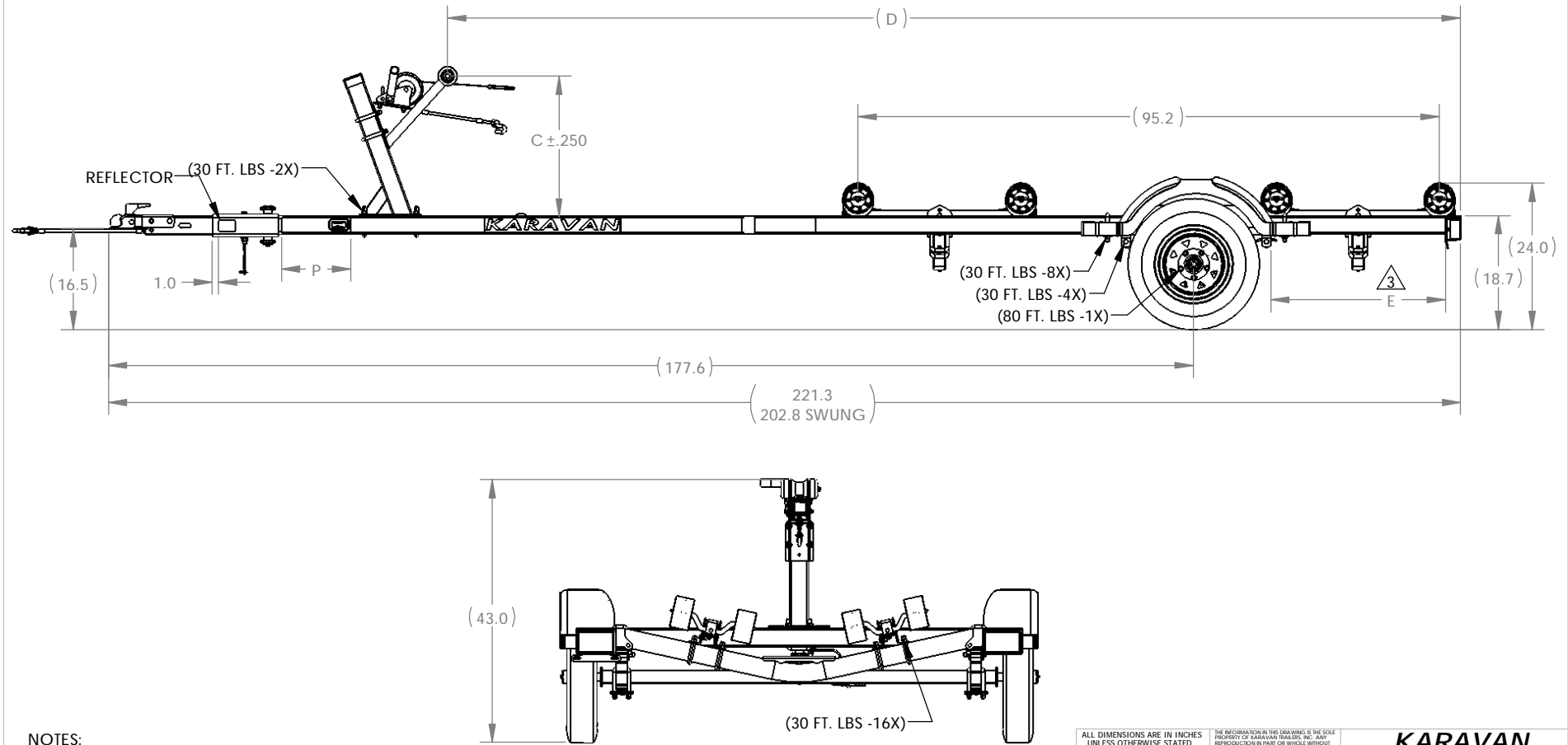
SHEET: 3 OF 6

SCALE: N/A

KARAVAN TRAILERS	
TITLE:	KCR-1600-60
MAT'L:	SEE B.O.M.
FINISH:	N/A
DWG. #:	KCR-1600-60

MODEL #	DIMENSIONS			
	"C"	"D"	"E"	"P"
	UP	REF	AXLE	LOGO
*	23.1	165.76	31.00	20.0

* TRAILER SET UP TO THESE DIMENSIONS



NOTES:

- 3 AXLE LOCATION DIMENSION IS FROM THE BACK OF THE SPRING HANGER TO THE BACK OF THE FRAME.
4. TORQUE CALLOUTS IN PARENTHESIS ARE FOR REFERENCE. TIGHTEN FASTENERS UNTIL PINCHED TIGHT (DO NOT OVER TIGHTEN ROLLER PIVOT POINTS). MINOR DEFLECTION OF MATERIAL IS ACCEPTABLE.

J	15543	KMH	07-09-12	310-01903 REPLACED 310-02255
H	15342	MJH	02-21-12	(8)210-00384 AND (8)210-00340 REPLACED (16)210-00268; UPDATED DIMENSIONS ON PAGES 4 AND 5.
DWG. REV.	ECR/NDP NUMBER	REVISED BY	DATE	DESCRIPTION

ALL DIMENSIONS ARE IN INCHES
UNLESS OTHERWISE STATED
TOLERANCES EXCEPT AS NOTED

DECIMALS:

.X ±0.100
.XX ±0.060
.XXX ±0.030
.XXXX ±0.010

ANGLES:
±1°

ALL FORMED ANGLES
EQUAL 90° UNLESS
NOTED OTHERWISE

() INDICATES REFERENCE

THE INFORMATION IN THIS DRAWING IS THE SOLE
PROPERTY OF KARAVAN TRAILERS, INC. ANY
REPRODUCTION IN PART OR WHOLE WITHOUT
THE WRITTEN PERMISSION OF KARAVAN TRAILERS,
INC. IS PROHIBITED.

APPROVED BY: ---

DRAWN BY: MATTHEW HALFMANN

DATE: 03-19-07

SHEET: 4 OF 6

SCALE: N/A

KARAVAN
TRAILERS

TITLE: KCR-1600-60

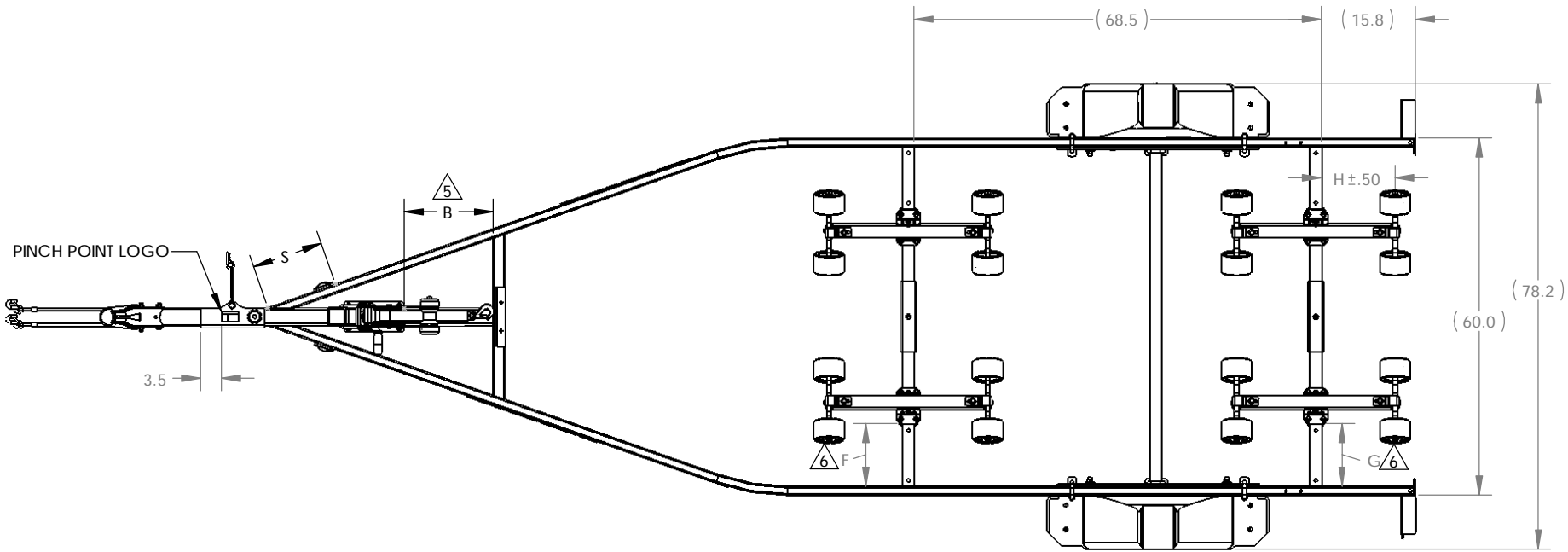
MAT'L: SEE B.O.M.

FINISH: N/A

DWG. #: KCR-1600-60

MODEL #	DIMENSIONS				
	"B"	"F"	"G"	"H"	"S"
	POST	FRONT	REAR	BACK	STAMP
*	15.0	10.5	10.6	14.8	12.0

* TRAILER SET UP TO THESE DIMENSIONS



- NOTES:
- 5 WINCH LOCATION IS THE DISTANCE FROM THE WINCH MOUNTING PLATE TO THE FRONT OF THE A-BRACE
- 6 ROLLER LOCATION IS THE DISTANCE FROM THE INSIDE OF THE SIDE TUBE TO THE OUTSIDE EDGE OF THE ROLLER BRACKET

J	15543	KMH	07-09-12	310-01903 REPLACED 310-02255
H	15342	MJH	02-21-12	(8)210-00384 AND (8)210-00340 REPLACED (16)210-00268; UPDATED DIMENSIONS ON PAGES 4 AND 5.
DWG. REV.	ECR/NDR NUMBER	REVISED BY	DATE	DESCRIPTION

ALL DIMENSIONS ARE IN INCHES
UNLESS OTHERWISE STATED
TOLERANCES EXCEPT AS NOTED

DECIMALS:
.X ±0.100
.XX ±0.060
.XXX ±0.030
.XXXX ±0.010

ANGLES:
±1°

ALL FORMED ANGLES
EQUAL 90° UNLESS
NOTED OTHERWISE

() INDICATES REFERENCE

THE INFORMATION IN THIS DRAWING IS THE SOLE
PROPERTY OF KARAVAN TRAILERS, INC. ANY
REPRODUCTION IN PART OR WHOLE WITHOUT
THE WRITTEN PERMISSION OF KARAVAN TRAILERS,
INC. IS PROHIBITED.

APPROVED BY:

DRAWN BY:
MATTHEW HALFMANN

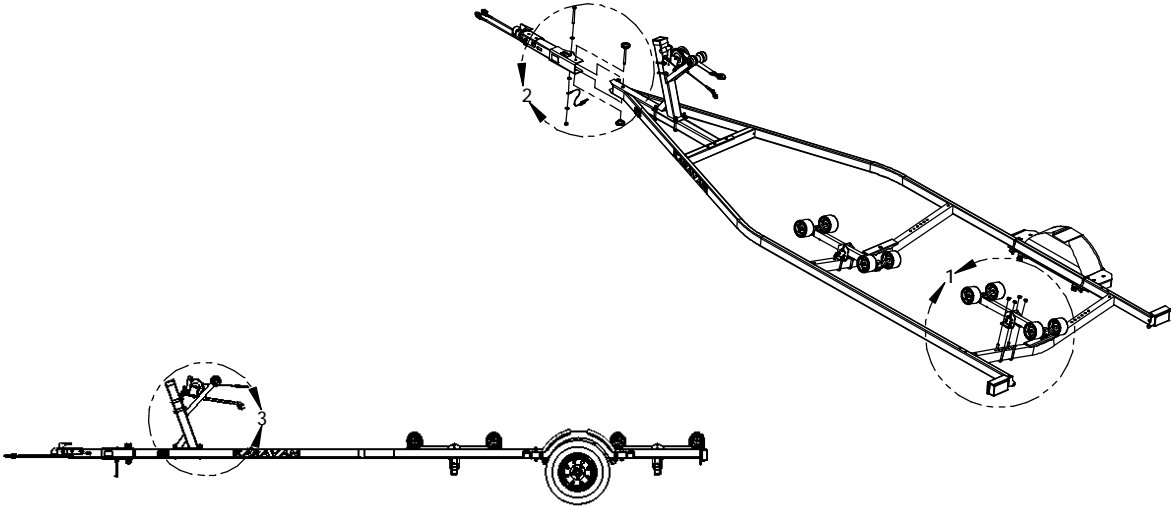
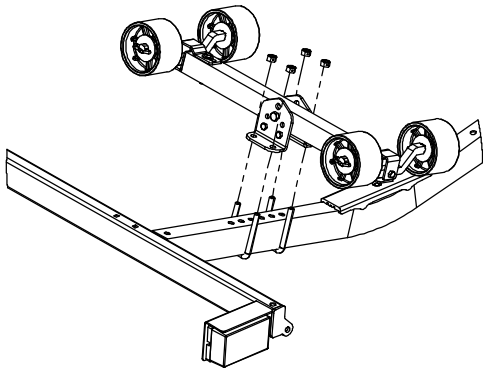
DATE:
03-19-07

SHEET:
5 OF 6

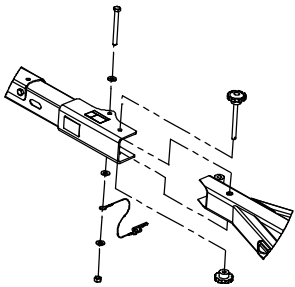
SCALE:
N/A

KARAVAN TRAILERS	
TITLE:	KCR-1600-60
MAT'L:	SEE B.O.M.
FINISH:	N/A
DWG. #:	KCR-1600-60

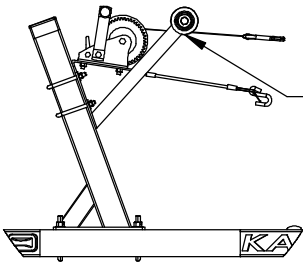
VIEW 1
ROLLER MOUNTING
INSTRUCTIONS



VIEW 2
SWING TONGUE MOUNTING
INSTRUCTIONS



VIEW 3
WINCH MOUNTING
INSTRUCTIONS



WINCH STRAP WITH HOOK RUNS
UNDER THE ROLLER BEFORE BEING HOOKED
TO THE BOW EYE OF THE BOAT.

J	15543	KMH	07-09-12	310-01903 REPLACED 310-02255
H	15342	MJH	02-21-12	(8)210-00384 AND (8)210-00340 REPLACED (16)210-00268; UPDATED DIMENSIONS ON PAGES 4 AND 5.
DWG. REV.	ECR/NDR NUMBER	REVISED BY	DATE	DESCRIPTION

ALL DIMENSIONS ARE IN INCHES UNLESS OTHERWISE STATED TOLERANCES EXCEPT AS NOTED	THE INFORMATION IN THIS DRAWING IS THE SOLE PROPERTY OF KARAVAN TRAILERS, INC. ANY REPRODUCTION IN PART OR WHOLE WITHOUT THE WRITTEN PERMISSION OF KARAVAN TRAILERS, INC. IS PROHIBITED.	KARAVAN TRAILERS
DECIMALS: .X ±0.100 .XX ±0.060 .XXX ±0.030 .XXXX ±0.010	APPROVED BY: ---	TITLE: KCR-1600-60
ANGLES: ±1°	DRAWN BY: MJ HALFMANN	MAT'L: SEE B.O.M.
ALL FORMED ANGLES EQUAL 90° UNLESS NOTED OTHERWISE	DATE: 03-19-07	FINISH: N/A
() INDICATES REFERENCE	SHEET: 6 OF 6	DWG. #: KCR-1600-60
	SCALE: N/A	