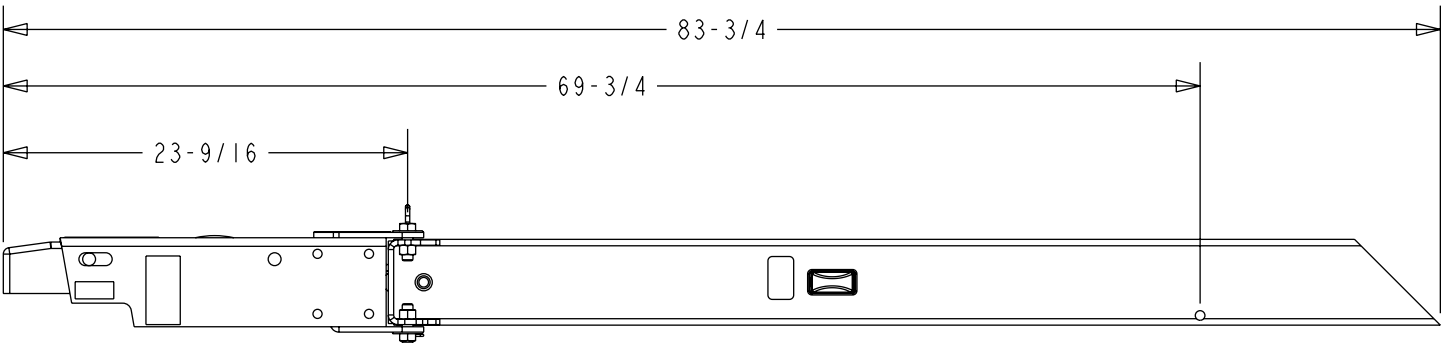
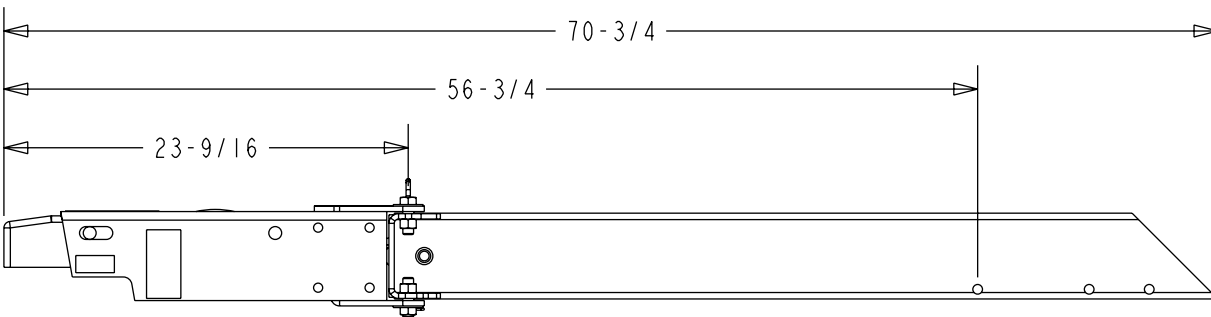
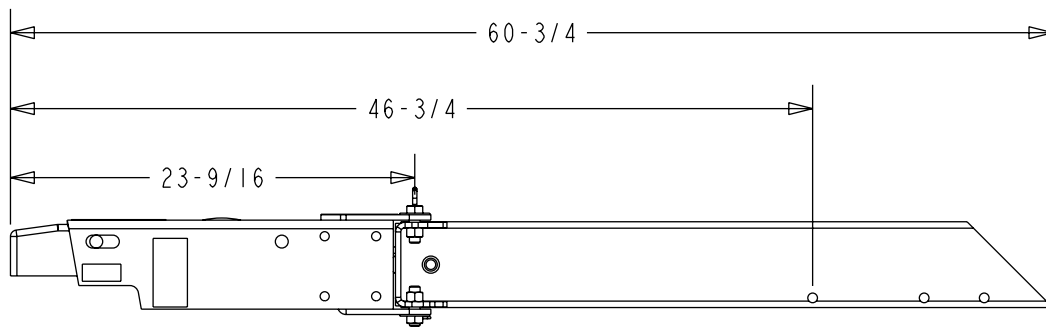


5" Swing Tongue Assemblies for Brake Trailers

The 5" swing tongue assembly with the actuator is a complete swing tongue that includes the tongue, actuator with one side of the hinge welded to the actuator housing, and tongue brake line. It also includes new side lights on the 78" replacement tongue.

The 5" brake swing tongue assembly is a replacement tongue that can be installed in both 2x4 and 2x5 trailer frames with a maximum GVWR (Gross Vehicle Weight Rating) under 7040 lb. equipped with brakes. It will replace a standard tongue and allows the front 24 inch actuator section to be swung to the side so that it will fit in a shorter storage area.

The winch post assembly must never be attached to the swing section of the tongue. The tongues are available in three different length rear sections to accommodate the mounting of the winch post. Choose the correct length that best adapts to the winch post setting for your boat.

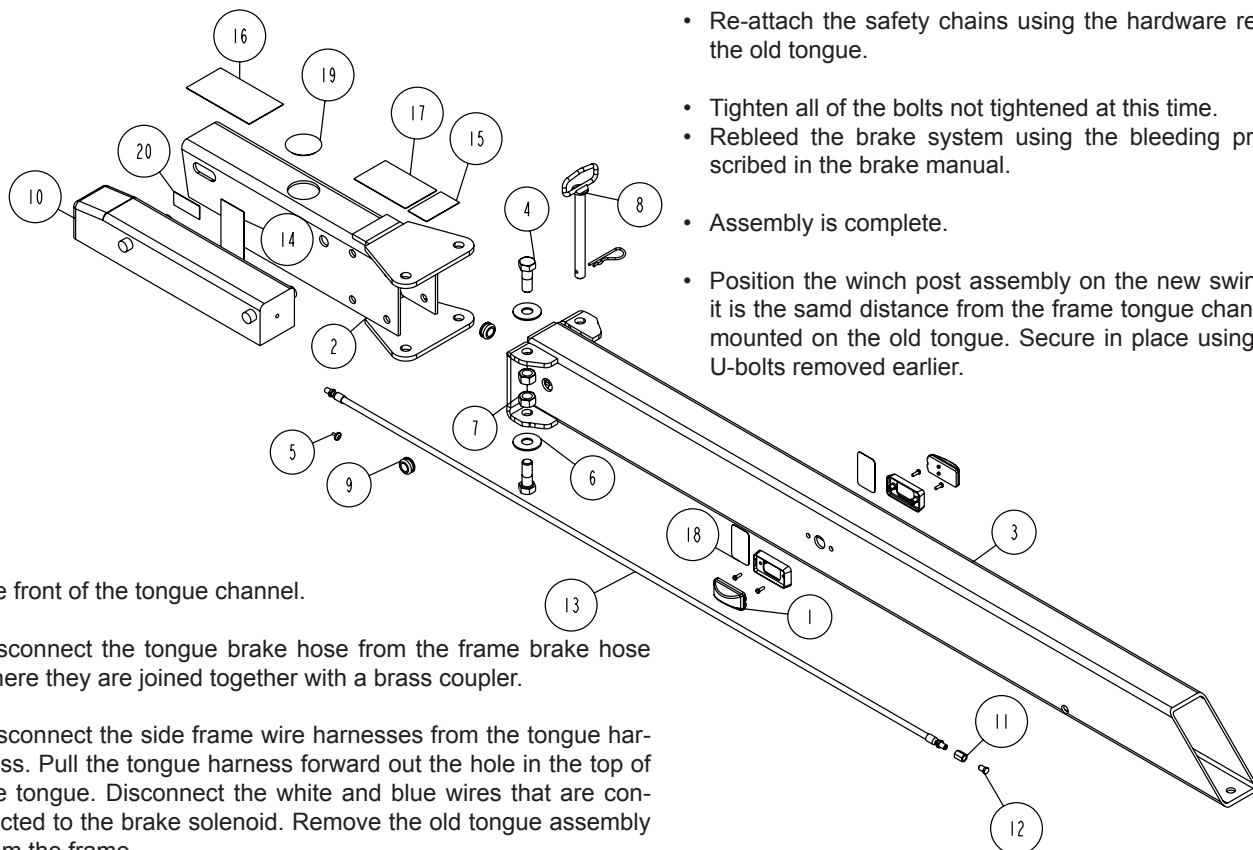


Removing the Old Tongue from the Frame

- Remove the boat from the trailer.
- Measure the location of the winch post with respect to the frame tongue channel before removing it so you know where it needs to be re-installed on the new tongue. Remove the winch post assembly by removing the attaching bolts or U-bolts.
- Remove the safety chains and the attaching hardware.
- Remove the 1/2" x 1 1/2" hex bolt holding the tongue cap and the rear of the tongue into the tongue channel.
- Remove the 1/2" x 4" hex cross bolt that attaches the tongue in

ITEM	PART #	DESCRIPTION	QTY	NOTE
1	69369	LIGHT KIT FOR LONG TONGUE DORAY FG	1	
2	69552	SWINGTONG WMENT ACT 5 IN	1	
3	69555	SWINGTONG WMENT REAR L	1	A
4	0140188	HH 5/8-11 X 13/4 GR5 A325	2	
5	0710031	SCREW #8-32 X 3/8 MACHINE PH SLTD	1	
6	1340105	WASHER USS FLAT 5/8	2	
7	1440279	HEX LOCKNUT 5/8-11 GRADE B	2	
8	3110424	PIN HITCH 5/8 X6IN WORKING LENGTH	1	
9	3510597	GROMMET 13/16IN WITH SPLIT 9/16ID	2	
10	3991015	ACTUATOR UFP INNER DISC BRAKE	1	
11	4510505	COUPLING - NO.302X3 WTHR-HD TUBE	1	
12	4510506	PLUG - #13IX3B (BLUEDOT) - BRASS	1	
13	4510563	HOSE BRAKELINE MALE-MALE 78IN	1	
14	4811471	DECAL CAUTION BRAKE LOCKOUT KEY	1	
15	4850183	DECAL SWINGTONGUE PINCH POINT	1	
16	4850235	DECAL FOR COATED UFP ACTUATOR	1	
17	4850422	DECAL SWINGTONGUE SAFETY INSTRUCT	1	
18	5110127	REFLECTOR ANDERSON AMBER	2	
-	5110577	WIRE JUMPER MALE 5/32 TO WASHER	1	
19	7010168	CAP PLASTIC OUTER MEMBER 2IN DI	1	
20	7010188	DECAL PUSH BRKT UFP ACTUATORS	1	

NOTES	
A	69553 SWINGTONGUE WMENT REAR S 69554 SWINGTONGUE WMENT REAR M



the front of the tongue channel.

- Disconnect the tongue brake hose from the frame brake hose where they are joined together with a brass coupler.
- Disconnect the side frame wire harnesses from the tongue harness. Pull the tongue harness forward out the hole in the top of the tongue. Disconnect the white and blue wires that are connected to the brake solenoid. Remove the old tongue assembly from the frame.

Installing the New Swing Tongue to the Frame

- Locate the new swing tongue and slide the rear section into the frame tongue channel.
- Align the cross hole in the new tongue with the hole in the frame tongue channel. Insert the 1/2" x 4" cross bolt just removed through the aligned hole to secure it in position. Place on the flange lock nut. **DO NOT** tighten at this point.

- Locate the white and blue wires from the brake solenoid that are extended out the hole in the right side of the rear tongue section just behind the hinge. Mate and connect the white and blue wires from the solenoid to the tongue harness just removed.
- Once connected, insert the end of the tongue wire harness into the hole where the connections were just made. Push the wire out the rear of the tongue. **NOTE:** If the swing tongue being installed is the 78" long version, the additional side marker lights provided will have to be installed in the holes provided on either side of the tongue rear section. The wires for the lights are routed backwards and will be plugged into the tongue harness during the installation process.
- Place the wire harness through the hole provided in the tongue cap along with the brake hose that is supplied inside the swing tongue.
- Reconnect the tongue harness to the frame harnesses. Push the excess wire back into the tongue.
- Connect the new tongue brake line hose to the frame brake hose using the brass coupler. Tighten.
- Align the hole in the rear of the tongue, the tongue channel and the tongue cover. Secure with the 1/2" x 1 1/2" hex bolt and flange lock nut removed earlier. Tighten the bolt just installed plus the cross bolt installed earlier.
- Re-attach the safety chains using the hardware removed from the old tongue.
- Tighten all of the bolts not tightened at this time.
- Rebleed the brake system using the bleeding procedure described in the brake manual.
- Assembly is complete.
- Position the winch post assembly on the new swing tongue so it is the same distance from the frame tongue channel as it was mounted on the old tongue. Secure in place using the bolts or U-bolts removed earlier.

- Place the boat on the trailer. Winch the boat into the winch post bow roller and check for proper winch post adjustment.
- If satisfactory, assembly is complete.

CAUTION: always check the brake hose location in the hinge area when swinging the tongue back into its towing position. Doing so will prevent the hose from becoming pinched and/or damaged in the tongue hinge.