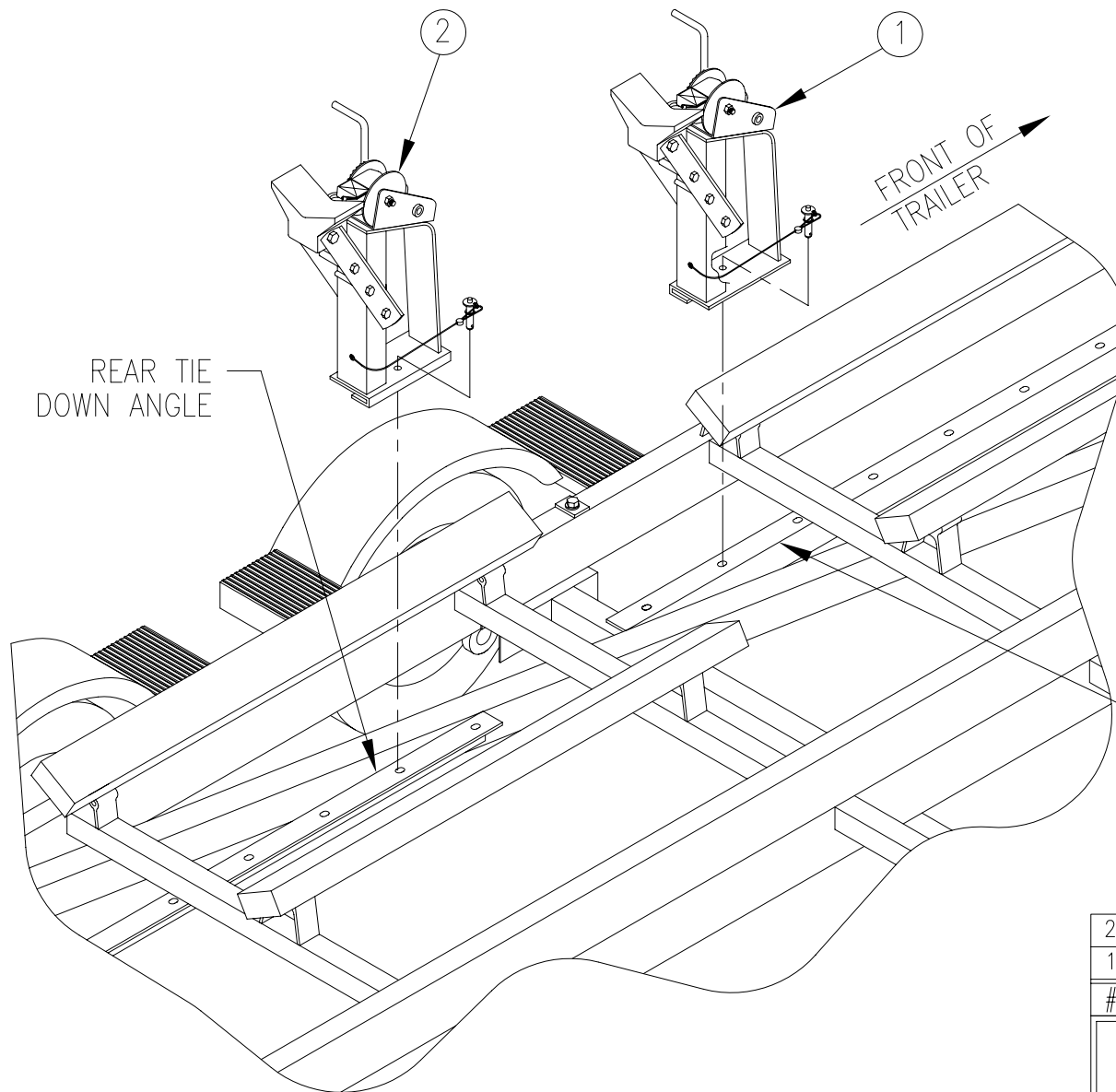
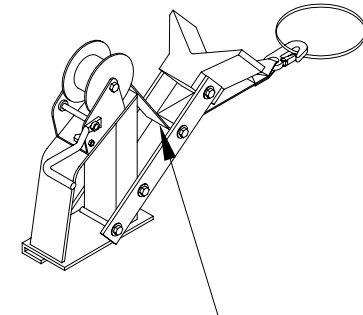


6924

WINCH STRAP
ROUTING

FOR SECURE FASTENING
STRAP MUST ROUTE UNDER
NYLON ROLLER. FAILURE TO
DO SO MAY RESULT IN DAMAGE,
AND WILL VOID WARRANTY.

WHEN USING THE FRONT TIE DOWN ANGLE TO MOUNT
ADD-ON BOW ASSEMBLY USE LEFT-HAND BOW ASSEMBLY
ON THE DRIVER'S SIDE AND RIGHT-HAND BOW ASSEMBLY
ON THE PASSENGER'S SIDE. FOR THE REAR TIE DOWN
ANGLE USE THE RIGHT-HAND BOW ASSEMBLY ON THE
DRIVER'S SIDE AND THE LEFT-HAND BOW ASSEMBLY ON
THE PASSENGER'S SIDE.

2	1006845	BOW ASSEMBLY, RH	1
1	1006844	BOW ASSEMBLY, LH	1
#	PART NO.	DESCRIPTION	QTY

TRITON CORP.

 857 WEST STATE STREET
 HARTFORD, WISCONSIN 53027
 PHONE: 414-670-6514
 FAX: 414-670-6545

SCALE: 1/16"=1"

OPERATION:

APPROVED BY:

DATE: 10-15-97

DRAWN BY: TF

BILL OF MATERIALS:

BOW KIT WC-IV

DESCRIPTION:

INSTRUCTION SHEET

DRAWING NO.:

1006924