

TRITON

CUSTOMER INSTRUCTION SHEET

DESCRIPTION:

UTILITY BOX

DRAWN BY:

LKW

DRAWING NO.:

REVISION DATE:

11-11-05

07109

#	PART NO.	DESCRIPTION	QTY
1	05031	UTILITY BOX	1
2	09968	PLASTIC STRAP	4
3	08130	1/4" FENDER WASHER	8
4	08738	#14 x 1 1/4 TEK SCREW	8
5	08910	TRED PAD	4

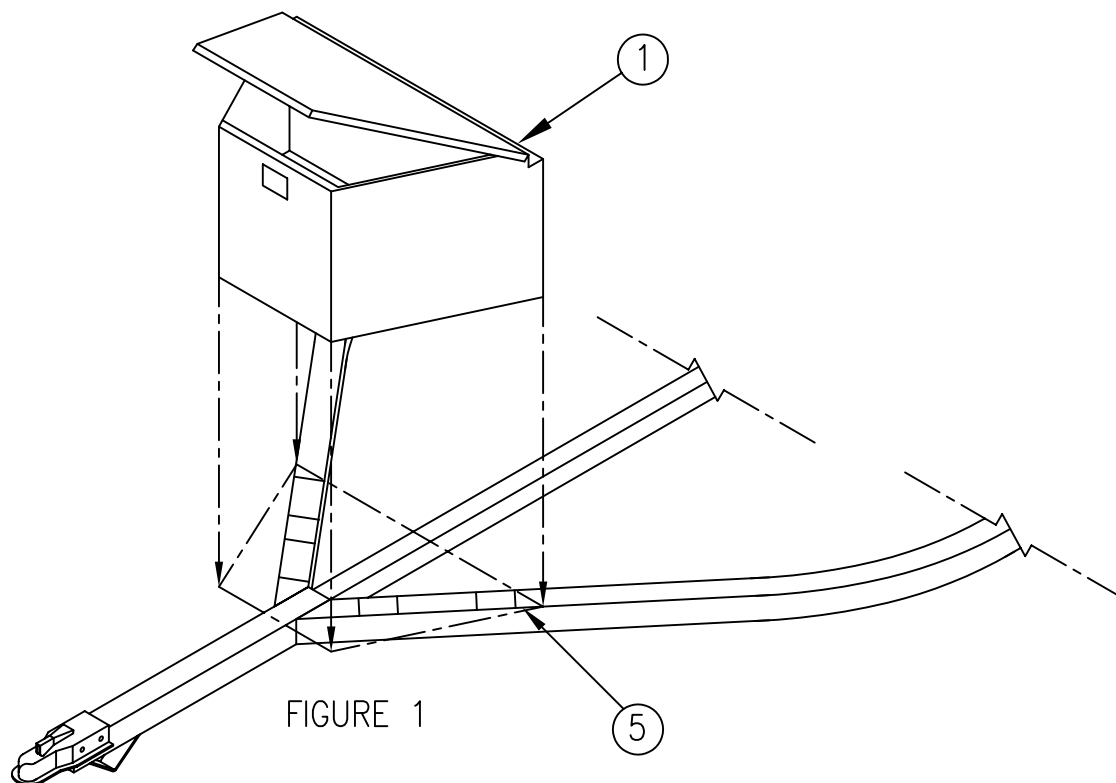


FIGURE 1

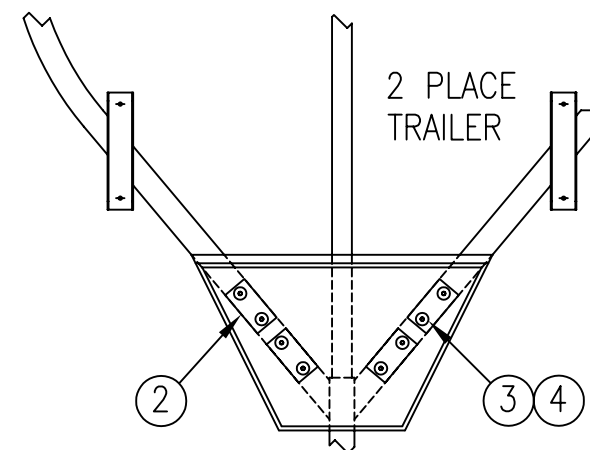
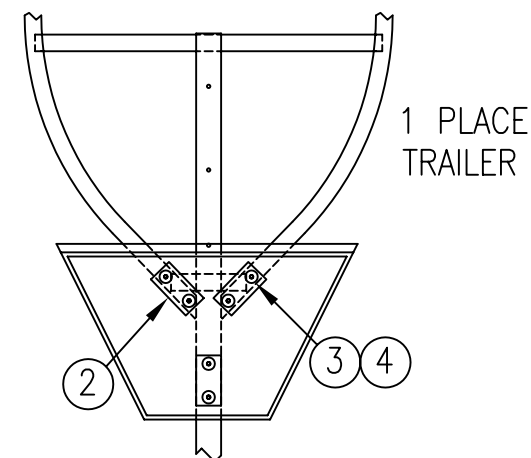


FIGURE 2

1. CENTER UTILITY BOX #1 ON TRAILER FRAME AS SHOWN IN FIGURES 1 & 2. WITH MARKER, TRACE ON TOP OF SIDE RAILS TO MARK OUTLINE OF UTILITY BOX.

2. REMOVE BOX. PEEL BACKING OFF OF SELF STICK TRED PADS #5 AND PLACE ON SIDE RAILS AT LOCATIONS SHOWN IN FIGURE 2.

3. PLACE BOX BACK ON TRAILER FRAME. ATTACH BOX AND PLASTIC STRAPS #2 USING SELF-DRILLING TEK SCREWS #4 AND FENDER WASHERS #3.